



76 Springdale Road  
Blindwells, Tranent  
East Lothian  
EH32 9SP



2



1



1

Please contact us for  
more information:

0131 555 7055  
[property@watermans.co.uk](mailto:property@watermans.co.uk)





## Summary

Set within the popular and growing community of Blindwells, this stylish two-bedroom mid-terraced house offers contemporary accommodation that is ideal for first-time buyers, young professionals, or downsizers. Beautifully presented throughout in modern neutral tones, the home features a bright living room, a well-appointed breakfasting kitchen with garden access, a ground-floor WC, and a modern family bathroom. Two double bedrooms provide comfortable accommodation, while a fully enclosed rear garden offers a safe outdoor retreat. The property further benefits from solar panels, and an allocated parking space with an EV charging point.

Extras: All fitted floor and window coverings and light fittings are included.

## Features

- Modern mid-terraced house in sought-after Blindwells
- Close to local amenities and transport links
- Neutral décor throughout
- Bright and spacious living room
- Contemporary breakfasting kitchen
- Ground-floor WC
- Two well-proportioned double bedrooms
- Principal bedroom with mirrored built-in wardrobes
- Modern bathroom with shower-over-bath
- Gas central heating, double glazing and solar panels
- Fully enclosed rear garden with patio
- Allocated parking space with EV charging point



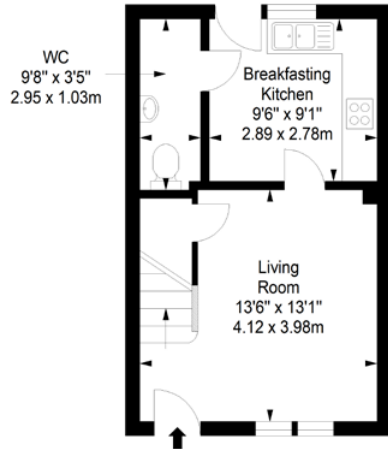




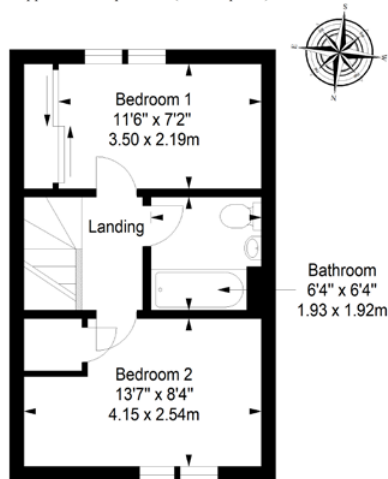


# Floorplan

Ground Floor  
Approx. 28.5 sq. metres (306.8 sq. feet)



First Floor  
Approx. 28.5 sq. metres (306.8 sq. feet)



Total area: approx. 57.0 sq. metres (613.6 sq. feet)

EPC Rating - B | Council tax band - D | Home report Value - £215,000

## Price & Viewings

Please refer to our website  
[www.watermans.co.uk](http://www.watermans.co.uk)

### Edinburgh

5-10 Dock Place, Leith, EH6 6LU  
0131 555 7055  
[property@watermans.co.uk](mailto:property@watermans.co.uk)

### Glasgow

193 Bath Street, Glasgow, G2 4HU  
0141 483 8325  
[westcoast@watermans.co.uk](mailto:westcoast@watermans.co.uk)

espc  
rightmove



These particulars do not constitute part of an offer or contract. All statements contained herein whilst believed to be correct are in no way guaranteed. Intending purchasers should satisfy themselves by inspection or otherwise as to the correctness of each of the statements contained in these particulars. Prospective purchasers are advised to have their interest noted through their solicitor as soon as possible in order that they may be informed in the event of an early closing date being set for the receipt of offers.