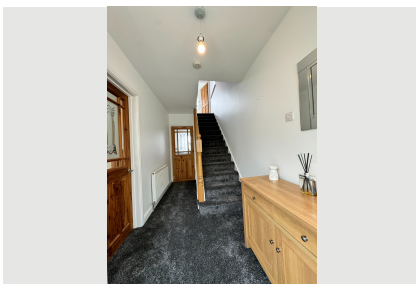







# Shallowford Road Plymouth



- ✔ 4 Bedrooms (3d 1s)
- ✔ Linked Detached Home
- ✔ Large Kitchen/dining Room
- ✔ Bathroom With Bath And Shower
- ✔ Off Road Parking 1 Car
- ✔ Upvc Throughout & Gch
- ✔ Utility Room Conservatory
- ✔ 111 Square Meters
- ✔ Enclosed Easy To Maintain Garden & Patio Area
- ✔ Epc: D

Guide Price **£320,000**

Bedroom  4 Bathroom  1 Reception  1