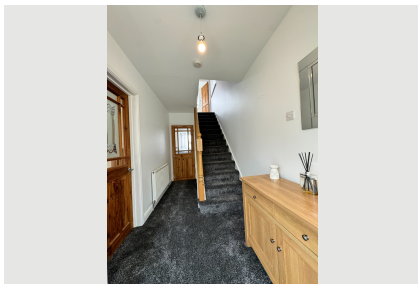





Shallowford Road Plymouth



- ✓ 4 Bedrooms (3d 1s)
- ✓ Linked Detached Home
- ✓ Large Kitchen/dining Room
- ✓ Bathroom With Bath And Shower
- ✓ Off Road Parking 1 Car
- ✓ Upvc Throughout & Gch
- ✓ Utility Room Conservatory
- ✓ 111 Square Meters
- ✓ Enclosed Easy To Maintain Garden & Patio Area
- ✓ Epc: D

Guide Price **£320,000**

Bedroom  4 Bathroom  1 Reception  1