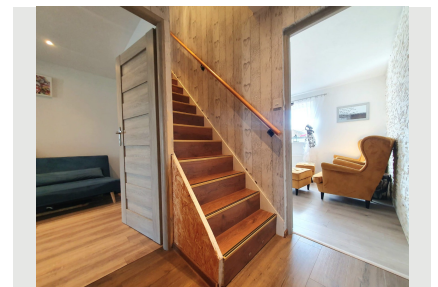




## Portland Road Irthlingborough, NN9 5SZ



- ✓ Renovated Throughout with Brand New Windows
- ✓ 30 Meters Long and Cleverly Designed Garden
- ✓ Rewired Electrics with New Main Unit
- ✓ Stone Build Fish Pond with Pumps
- ✓ New Plumbing with New Valliant Combi Boiler
- ✓ Large Wooden Sturdy Shed at the Back Garden
- ✓ Brand New High Gloss Fully Integrated Kitchen
- ✓ Garage with Gate and Side Access
- ✓ Anti Theft Front Doors with Modern Interior Doors
- ✓ Aldi in the Village & Rushden Lakes Shopping Centre

Offers in Excess of **£230,000**

Bedroom  2 Bathroom  1 Reception  2