

Charming Two-Bedroom Bungalow in Clayton-Le-Moors

Key Features

- Two bedrooms
- Open-plan kitchen and lounge
- Modern kitchen and bathroom
- Driveway parking
- Newly built
- quiet residential development
- Low maintenance patio
- EV charging point
- Close to local shops and post office
- Close to local parks and schools

This delightful stone-built two-bedroom semi-detached bungalow is located on a small, friendly residential development in Clayton-Le-Moors. The bungalow features a bright and spacious living kitchen with a bespoke joiner-made kitchen, complete with solid wood painted doors and quality Hotpoint appliances, including a fitted dishwasher and fridge freezer. The grey stone-effect tiles in the kitchen flow seamlessly into the grey wood-effect laminate flooring in the living room, and the bedrooms are finished with a soft, mid-grey carpet. The property benefits from energy-efficient electric radiators. Outside, you'll find a spacious flagged patio, tarmac drive with two parking spaces, and an EV charger.

From the Agent's Perspective

This newly built bungalow on Pickup Street is a fantastic opportunity for those looking for a contemporary home with a spacious layout. The open-plan design of the kitchen and lounge creates a welcoming atmosphere, and the modern bathroom is designed to a high standard. The property benefits from a private driveway, offering off-road parking. It's also well-positioned, just a short walk from local shops and transport links, making it an excellent choice for anyone who values convenience and modern living.

From the Client's Perspective

With over 30 years of building experience, we have built this bungalow to a high standard. It is a stone-built, semi-detached bungalow on a small residential development, perfect for first-time buyers or those looking to downsize.



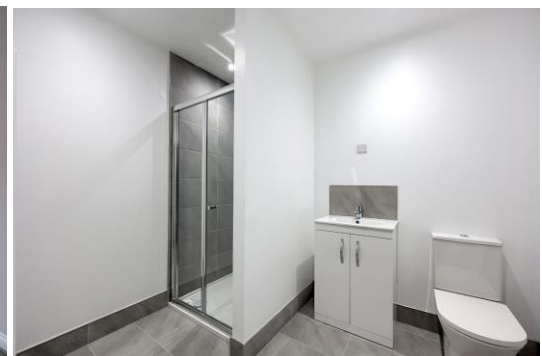
**Pendle Hill
Properties**

Read: 154 Whalley Road Read BB12 7PN 01282 772048

Longridge: 74 Berry Lane Longridge PR3 3WH 01772 319421

e. info@pendlehillproperties.co.uk

w. www.pendlehillproperties.co.uk



*40a Pickup Street
Clayton-Le-Moors*

Offers in the Region of: £179,950



**Pendle Hill
Properties**