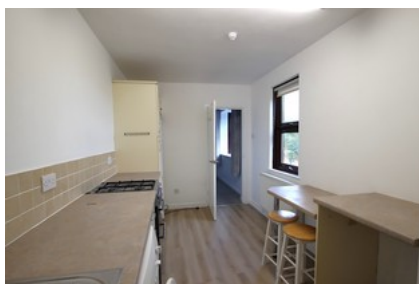




## Bromwich Road Worcester



- ✓ Ideal For First Time Buyer Or Investment
- ✓ Decent-sized Kitchen With Ample Storage
- ✓ Potential Annual Rental Income = 9,000
- ✓ First Floor Flat
- ✓ Close To City Centre
- ✓ Large Living Room
- ✓ New Boiler
- ✓ Lots Of Storage
- ✓ Long Lease And Low Service Charge
- ✓ Epc Rating = C

Fixed Price **£165,000**

Bedroom  2 Bathroom  1 Reception  1