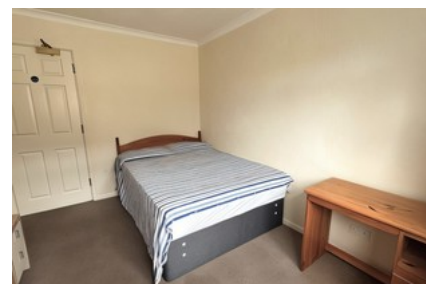




## Oldbury Road Worcester



- ✓ Well-proportioned Detached Bungalow
- ✓ Ideal For A Family
- ✓ Three (3) Spacious Bedrooms
- ✓ Lounge
- ✓ Kitchen And Breakfast Room
- ✓ Generous Garden With Garage And Ample Parking For Vehicles
- ✓ Epc Rating - D
- ✓ Suitable For Investment As A Residential Or Hmo Let
- ✓ Potential Annual Rent Income - 24,000. Operating As A House In Multiple Occupation (hmo)
- ✓ Nine (9) Minutes' Walk To University Of Worcester St. John's Campus

Offers Over **£300,000**

Bedroom 3 Bathroom 1 Reception 2