



FLEXIAGENT

Market Leading, Independent Estate Agents



Meadow Avenue Southport, PR8 5HF Guide Price £130,000

FOR SALE BY AUCTION

AUCTION START TIME: 10AM THURSDAY 12th June 2025

AUCTION END TIME: 1PM THURSDAY 12th June 2025

CASH BUYERS ONLY

GUIDE PRICE - £130,000

RESERVE PRICE - £143,000

Flexi-Agent is proud to present this three-bedroom semi-detached property to the open sales market. Situated on Meadow Avenue in Birkdale, the property is surrounded by a wealth of local amenities, offers excellent transport links, and is just a stone's throw from Southport town centre.

The property briefly comprises a front entrance porch and hallway, a front-facing lounge with a feature bay window, a dining room with a single sliding door leading to the rear, and a nicely presented kitchen.

- Three bedroom, Semi Detached, Circa 1063 sqft
- **Auction**
- GUIDE PRICE - £130,000
- RESERVE PRICE - £143,000
- Spacious front facing lounge
- Nicely presented kitchen
- Dining room with a sliding door to the rear
- Ample driveway parking
- Sun catching rear garden
- Viewings available upon request

Viewing

Please contact our Flexi Agent Southport Office on 01704 889455 if you wish to arrange a viewing appointment for this property or require further information.



3



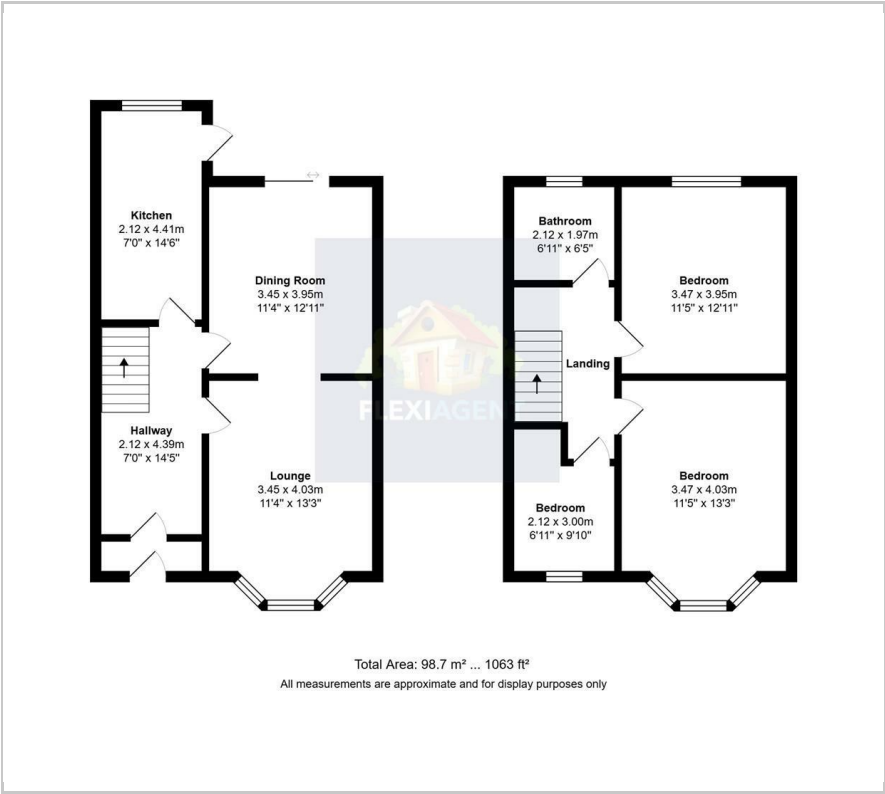
1



2



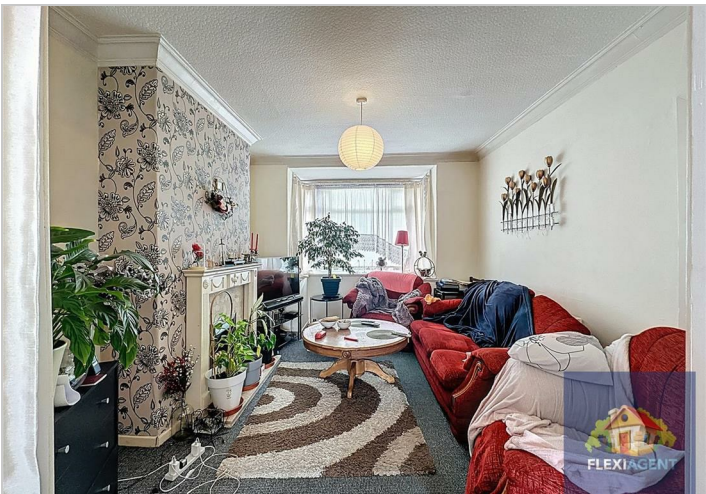
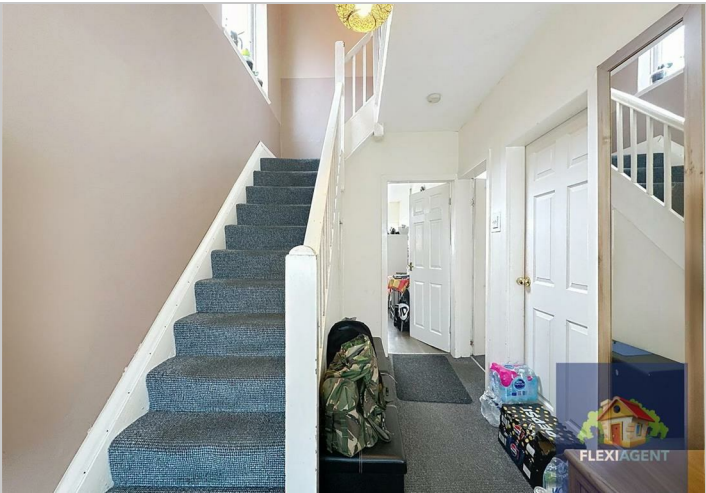
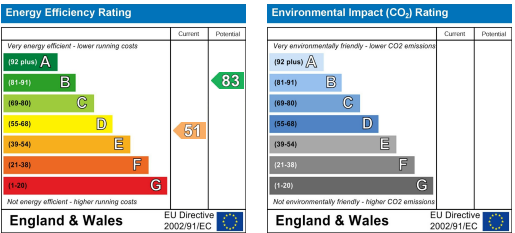
Floor Plan



Area Map



Energy Efficiency Graph



These particulars, whilst believed to be accurate are set out as a general outline only for guidance and do not constitute any part of an offer or contract. Intending purchasers should not rely on them as statements of representation of fact, but must satisfy themselves by inspection or otherwise as to their accuracy. No person in this firms employment has the authority to make or give any representation or warranty in respect of the property.