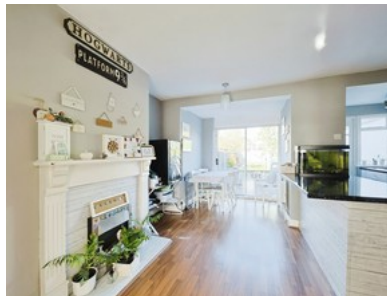


Boothferry Road, Hull

GUIDE PRICE £170,000



- ❖ Three-bedroom Terrace In Hessle
- ❖ Large Garden With Patio Area
- ❖ Entrance Hall Leading To Cosy Lounge
- ❖ Large Dining Kitchen With Patio Doors
- ❖ Close To Well-regarded Schools
- ❖ Convenient Bus Routes Nearby
- ❖ Freehold
- ❖ Council Tax Band B
- ❖ Epc D



Bedroom 3 Bathroom 1 Reception 1

Guide Price

£170,000