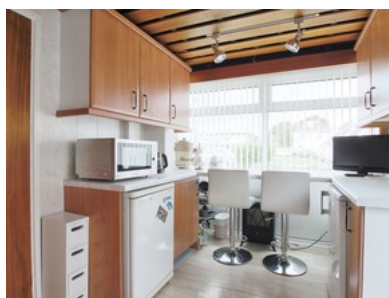
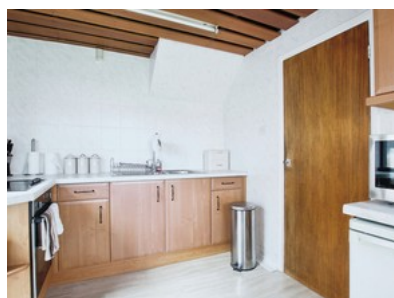


Willow Court, Willerby

INVITING OFFERS BETWEEN £230,000 - £250,000



- ✔ Two Bedroom Semi-detached Dormer Bungalow On Willow Court
- ✔ Quiet Cul De Sac Location With Lots Of Potential For Modernisation
- ✔ Traditional Kitchen With Breakfast Bar And Spacious Lounge
- ✔ Downstairs Bedroom And Bathroom, Plus Double Bedroom Upstairs With Storage Space
- ✔ South Facing Garden Perfect For Sunshine
- ✔ Freehold
- ✔ Council Tax Band C
- ✔ Epc E



Bedroom 2 Bathroom 2 Reception 2

Guide Price

£230,000