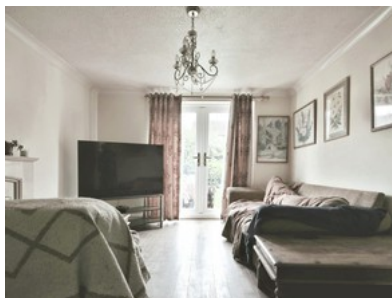


Beamsley Way, Kingswood

OFFERS INVITED BETWEEN £180,000 - £190,000



- ✔ Three Bed, Two Reception Rooms, Two Bath Detached House
- ✔ Corner Plot
- ✔ Wrap Around Gardens
- ✔ Drive & Garage
- ✔ Very Sought After Kingswood Location
- ✔ Priced To Sell
- ✔ Some Updating Required
- ✔ Master Bedroom With En Suite
- ✔ Family Bathroom & Wc
- ✔ Epc C



Bedroom 3 Bathroom 2 Reception 2

Guide Price

£180,000