

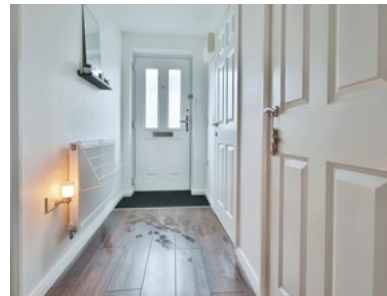
Shinewater Park, Kingswood

OFFERS OVER £100,000



Check out the video!

- ✔ A Superb One Bedroom Spacious Ground Floor Flat
- ✔ Corner Plot
- ✔ Suitable For 1st Time Buyer, Perfect For Independent Living
- ✔ Very Close To Shops, A Medical Centre & Amenities
- ✔ Private Rear Garden And Allocated Parking To Rear
- ✔ Leasehold
- ✔ Council Tax Band A
- ✔ Epc C



Bedroom 1 Bathroom 1 Reception 1

Offers Over

£100,000