



18 Mill Lane, Shoreham-By-Sea, West Sussex, BN43 5AG
£1,100,000

18 Mill Lane, Shoreham-By-Sea, West Sussex, BN43 5AG

The Property & Area

Situated on the highly sought-after Mill Lane in Shoreham-By-Sea, this impressive three-bedroom house offering almost 2,000 sq ft of versatile family living space presents a fantastic opportunity for those seeking a spacious home in a prime location, close to the town centre, station, and beach.

You're welcomed into bright, open-plan living and dining areas that provide an inviting atmosphere for both relaxation and entertaining. The layout flows seamlessly, creating a sense of space and connectivity throughout the ground floor. The central part of this home is undoubtedly the stylish kitchen, featuring a practical island and bi-fold doors that open directly onto the garden, perfect for indoor-outdoor living and enjoying warmer days. This well-designed space is for both everyday family life and social gatherings.

Adding to the property's versatility is a dedicated garden room, an ideal space that could serve as a home office, a private gym, or a creative studio, catering to a variety of modern lifestyle needs. This additional room offers valuable flexibility, allowing you to tailor the space to your requirements.

Upstairs, the property has three well-proportioned double bedrooms, each offering a comfortable space. The contemporary bathroom is a highlight, featuring a luxurious freestanding tub. With three bathrooms in total, convenience is assured for a busy family household.

Outside, the property benefits from a spacious rear garden, complete with a welcoming terrace and a dedicated seating area, ideal for dining and outdoor enjoyment. The garden provides a private space. Furthermore, the property includes a driveway with ample space for several cars, complemented by a double garage, ensuring all parking and storage needs are met.

This house on Mill Lane offers a super central location, providing excellent access to local amenities, transport links, and the beautiful Shoreham-By-Sea beach. It is perfect for families looking for a substantial home in a vibrant and convenient setting. This property combines generous living spaces with practical features, making it an appealing choice.

Get in touch with our Shoreham team to arrange a viewing!

Material Information:

Tenure: Freehold

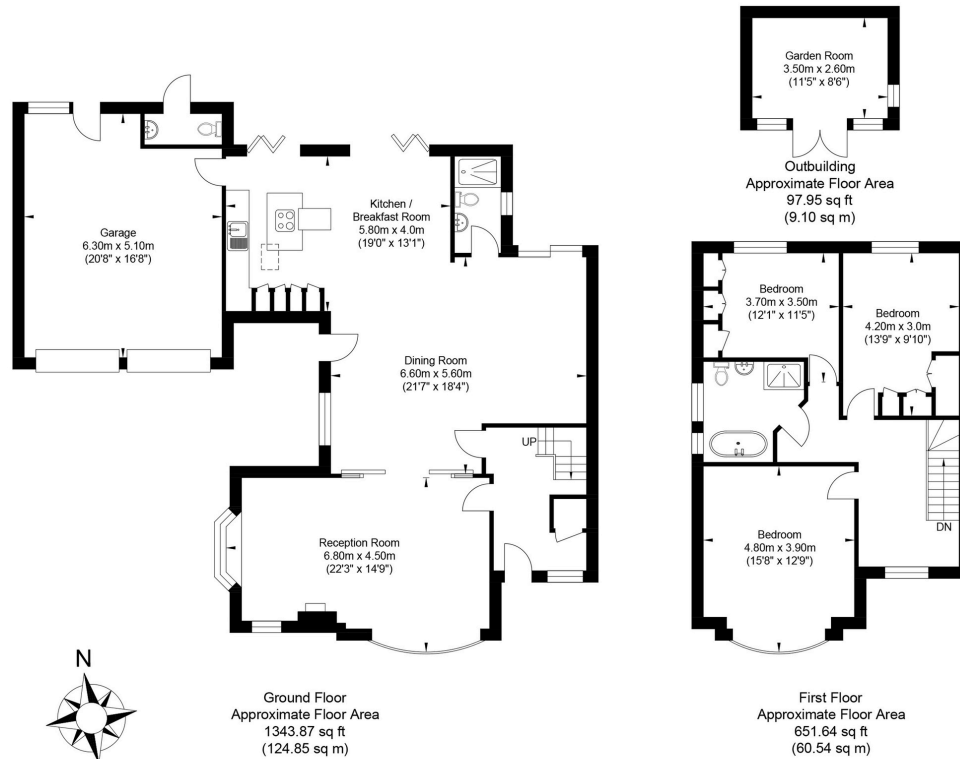
Council Tax: F

Oakley & Foster & Co are working jointly on the sale.



Floorplan

Mill Lane



Approx. Gross Internal Floor Area (Excluding Outbuilding) = 185.39 sq m / 1995.51 sq ft
Illustration for identification purposes only, measurements are approximate, not to scale.

Energy Performance Certificate

Score	Energy rating	Current	Potential
92+	A		
81-91	B		
69-80	C		
55-68	D	61 D	77 C
39-54	E		
21-38	F		
1-20	G		



Oakley

Your Sussex Property Expert

Shoreham Property Hub

01273 661 577

6 Brunswick Road, Shoreham BN43 5WB

www.oakleyproperty.com

shoreham@oakleyproperty.com

We also have offices in:

Lewes

Brighton & Hove

Get in touch to book a viewing or valuation of
your own property



Please note:

These details have been produced in good faith and are believed to be accurate based upon the information supplied but they are not intended to form part of a contract. All statements contained in these particulars as to this property are made without responsibility on the part of Oakley, the vendors or lessors and are NOT to be relied on as statements or representations of fact. Any intending purchasers must satisfy themselves by inspection or otherwise as to the correctness of each of the statements contained in these particulars. The vendors, Oakley and any person who work in their employment do not have any authority to make or give any representation or warranty. The floor plan is for illustrative purposes only and the accuracy cannot be relied upon or guaranteed and no responsibility is taken for an error, omission or mis-statement. The total floor area shown has been taken from the EPC.