



TO BOOK A VIEWING OR
REQUEST FURTHER INFORMATION
PLEASE CONTACT OUR EXPERT
REPRESENTATIVES
OAKLEY PROPERTY
01273 688881
BRIGHTON@OAKLEYPROPERTY.COM



Oakley

Your Sussex property expert

OAKLEY PROPERTY
BRIGHTON & HOVE RESIDENTIAL SALES
3-6 NORTH ROAD • BRIGHTON • BN1 1YA
01273 688881 • OAKLEYPROPERTY.COM

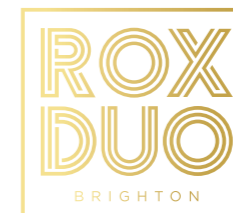
NEW HOMES
WARRANTY BY



Please Note: these details have been produced in good faith and are believed to be accurate based upon the information supplied but they are not intended to form part of a contract. All statements contained in these particulars as to this property are made without responsibility on the part of Oakley, the vendors, or lessors and are not to be relied on as statements or representations of fact. Any intending purchasers must satisfy themselves by inspection or otherwise as to the correctness of each of the statements contained in these particulars. The vendors, Oakley and any person who works in their employment do NOT have any authority to make or give any representation or warranty. The floor plans are for illustrative purposes only and the accuracy cannot be relied upon or guaranteed and no responsibility is taken for any error, omission or misstatement.







THE NEW & ICONIC BRIGHTON LANDMARK

Entering via the statement entrance lobby, there is an immediate sense of arrival at ROX, with inspired interior design that pays homage to its Art Deco roots. This collection of maisonettes are arranged around the open-air communal courtyard garden.

These 1,2 & 3 bedroom maisonettes are presented over two floors, giving them a house like feel, some featuring an enviable private patio.





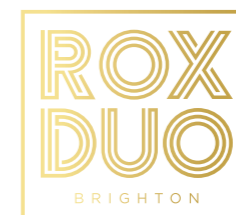
MODERN OPEN PLAN LIVING

THE HOMES OFFER MODERN OPEN PLAN LIVING, WITH THE KITCHENS FEATURING SLEEK MARBLE-EFFECT WORKTOPS, HANDLELESS CABINETRY, POWDER-COATED MATT BLACK FRANKE FIXTURES AND BRANDED APPLIANCES THROUGHOUT.



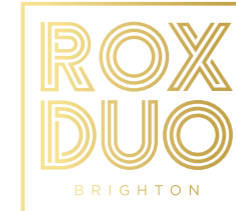
A CHOICE OF ONE, TWO AND THREE BED MAISONETTES, SOME WITH PATIO GARDENS AND ALL WITH AMAZING RESIDENTS' FACILITIES.





THIS FEELING OF LUXURY AND COMFORT IS ENHANCED BY THE SOFT AMBIENT LIGHTING CREATED BY THE COFFERED CEILINGS, THE OVERSIZED ENTRANCE DOORS AND THE WARMING, ENGINEERED-OAK HERRINGBONE-PATTERN PARQUET FLOORING.

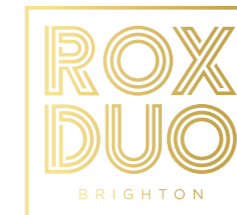




WITH THE PERFECT LAYOUT AND AN ELEGANT MONOCHROME AESTHETIC, THE BATHROOMS ARE DESIGNED TO BE AS BEAUTIFUL AS THEY ARE FUNCTIONAL.

Recessed shelving and soft mood lighting feature, as well as wall-mounted fixtures to maximise space. The bathrooms are also linked to the fully customisable underfloor heating system for ultimate comfort.

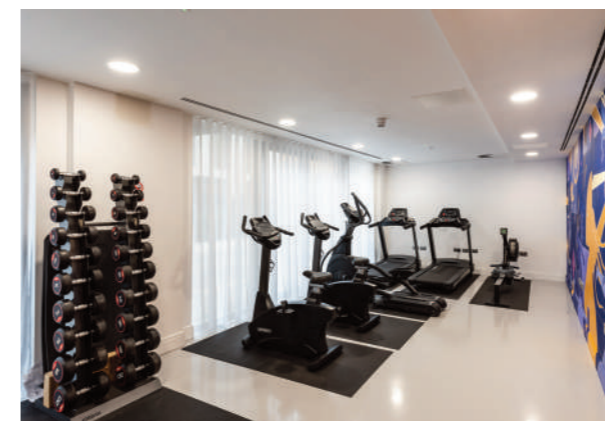




THE NEW & ICONIC BRIGHTON LANDMARK

ROX amenities include the residents' cinema,
residents' lounge with co-working space,
concierge, pet wash, and fully equipped gym.

WANT A HOUSE BUT WITH THE ADDED
SECURITY & COMMUNITY OF AN APARTMENT?
THROW IN A CO-WORKING SPACE, CINEMA,
GYM AND A FRIENDLY CONCIERGE!



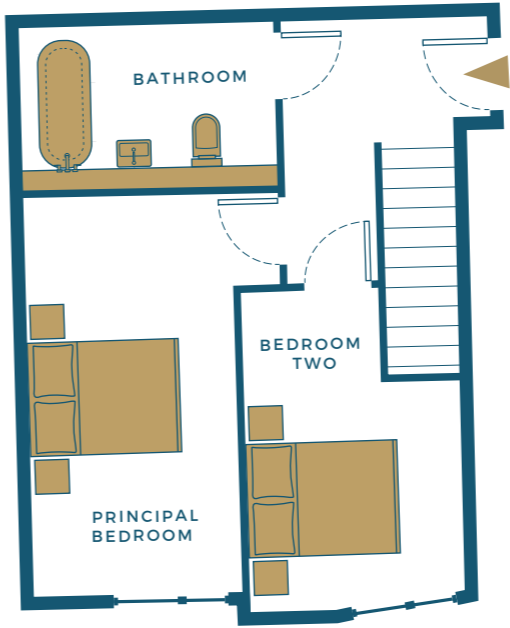


THE MAISONETTE
APARTMENTS

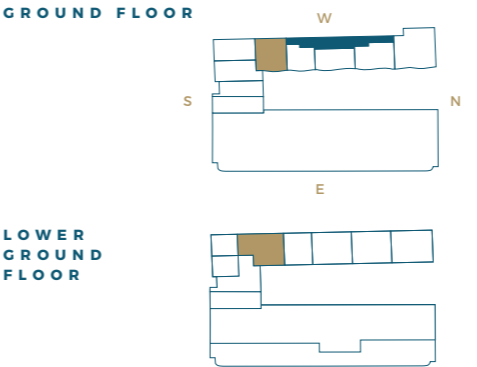
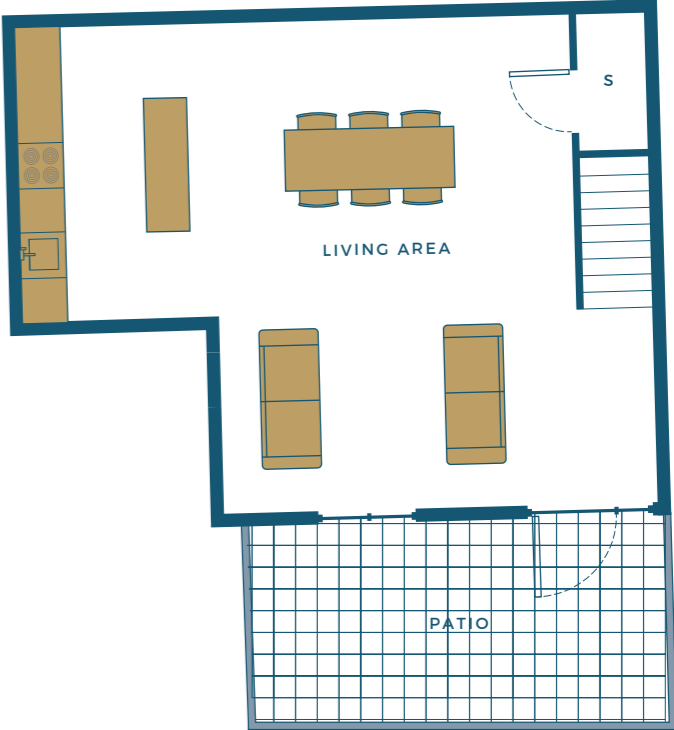


1 ROX BRIGHTON

UPSTAIRS



DOWNSTAIRS

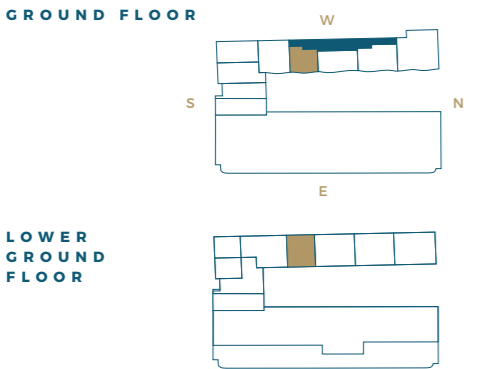
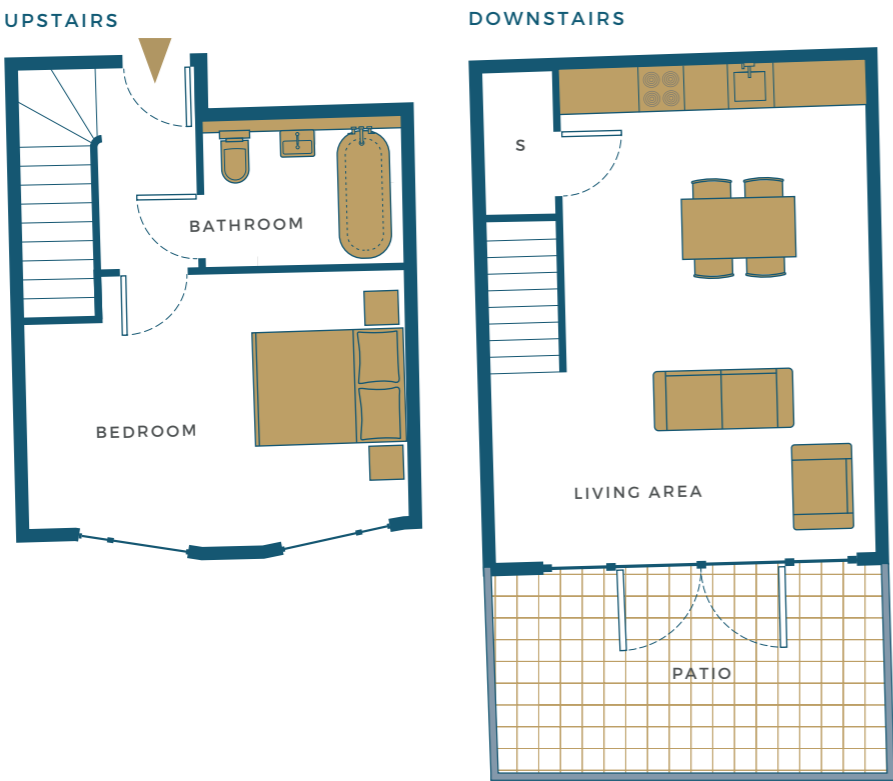


INTERNAL AREA (APPROX) 87.51 sq. m / 942 sq. ft.	LIVING AREA 7.30 m x 6.30 m / 23'11" x 20'8"	PRINCIPAL BEDROOM 5.13 m x 3.41 m / 13'5" x 9'3"
BEDROOM TWO 4.10 m x 2.84 m / 13'5" x 9'3"	BATHROOM 1.70 m x 3.20 m / 5'7" x 10'6"	OUTDOOR SPACE 10.21 sq. m / 110 sq. ft.
FLOOR Ground & Lower Ground Floor		

UT - UTILITIES | S - STORAGE
This information is for guidance only and does not form any part of any contract or constitute a warranty. Kitchen and bathroom layouts are indicative only.



2 ROX BRIGHTON



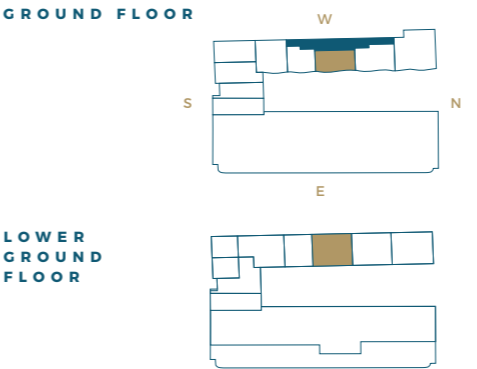
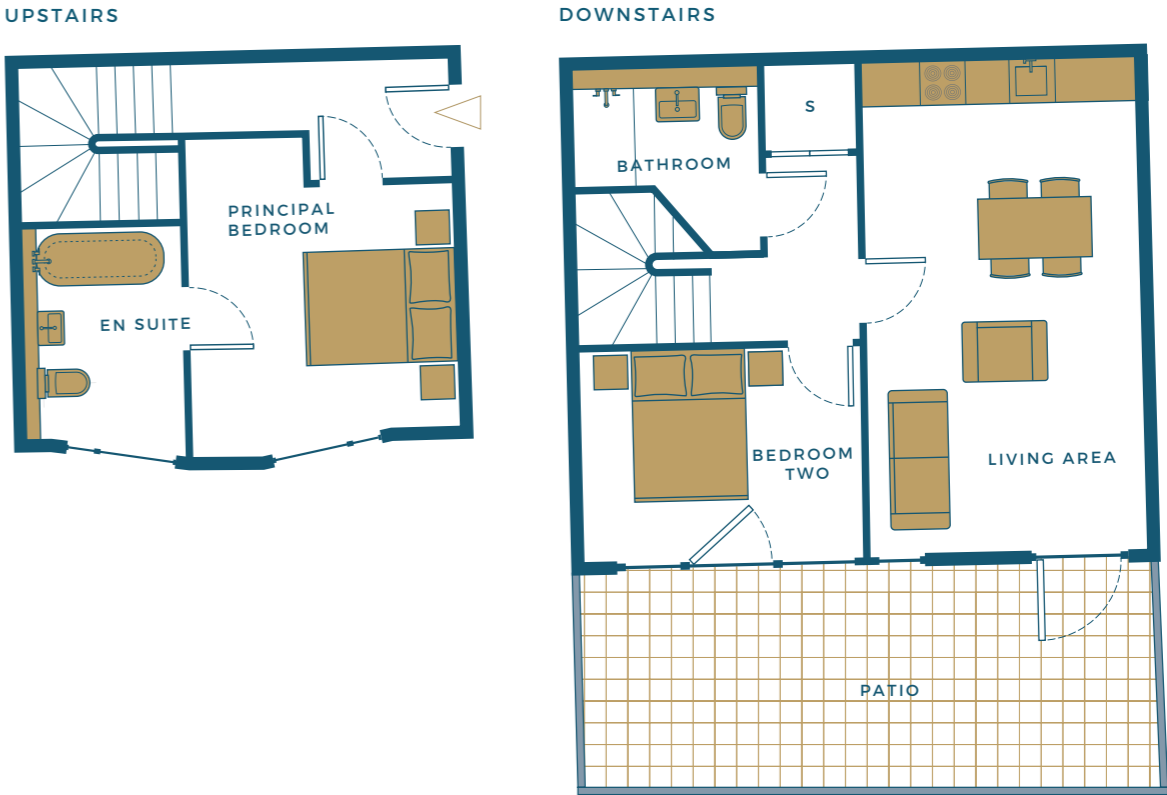
INTERNAL AREA (APPROX) 57.69 sq. m / 621 sq. ft.	LIVING AREA 6.30 m x 4.97 m / 20'8" x 16'3"	BEDROOM 4.96 m x 3.39 m / 16'3" x 11'1"
BATHROOM 1.70 m x 2.45 m / 5'7" x 8'0"	OUTDOOR SPACE 11.14 sq. m / 120 sq. ft.	FLOOR Ground & Lower Ground Floor

UT - UTILITIES | S - STORAGE

This information is for guidance only and does not form any part of any contract or constitute a warranty. Kitchen and bathroom layouts are indicative only.



3 ROX BRIGHTON



INTERNAL AREA (APPROX) 71.99 sq. m / 775 sq. ft.	LIVING AREA 6.30 m x 3.59 m / 20'8" x 11'9"	PRINCIPAL BEDROOM 4.15 m x 3.50 m / 13'7" x 11'5"
EN SUITE 1.80 m x 2.60 m / 5'10" x 8'6"	BEDROOM TWO 3.62 m x 2.59 m / 11'10" x 8'5"	BATHROOM 1.37 m x 2.47 m / 4'6" x 8'1"
OUTDOOR SPACE 18.58 sq. m / 200 sq. ft.	FLOOR Ground & Lower Ground Floor	

UT - UTILITIES | S - STORAGE

This information is for guidance only and does not form any part of any contract or constitute a warranty. Kitchen and bathroom layouts are indicative only.

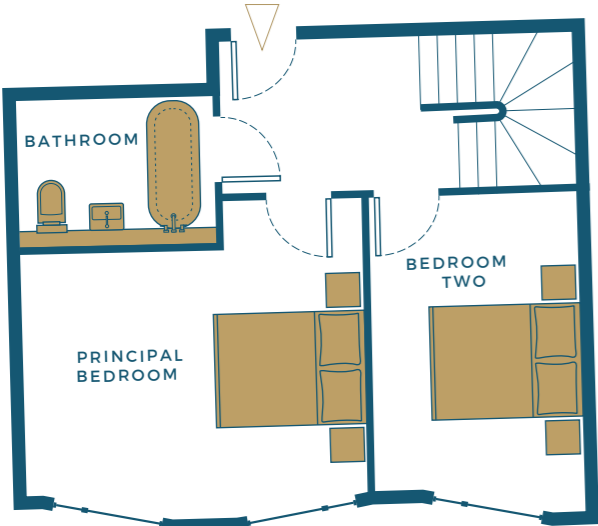


4 ROX BRIGHTON

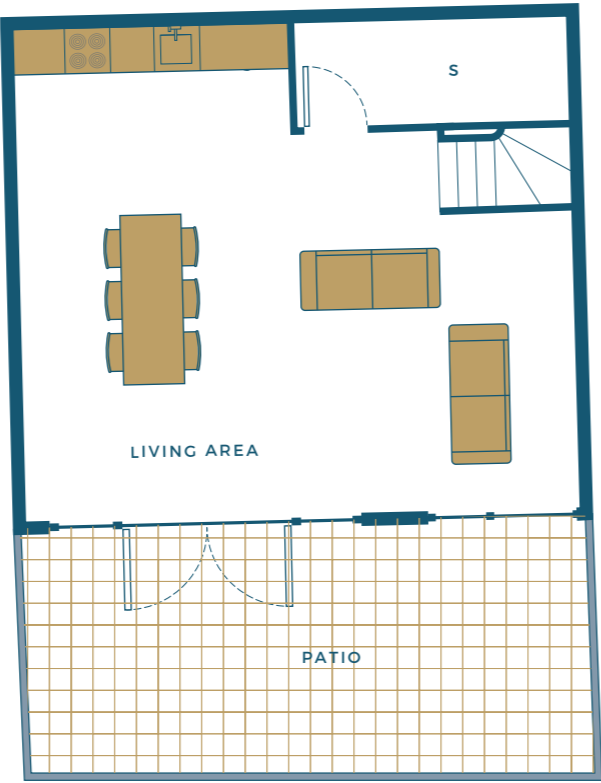


5 ROX BRIGHTON

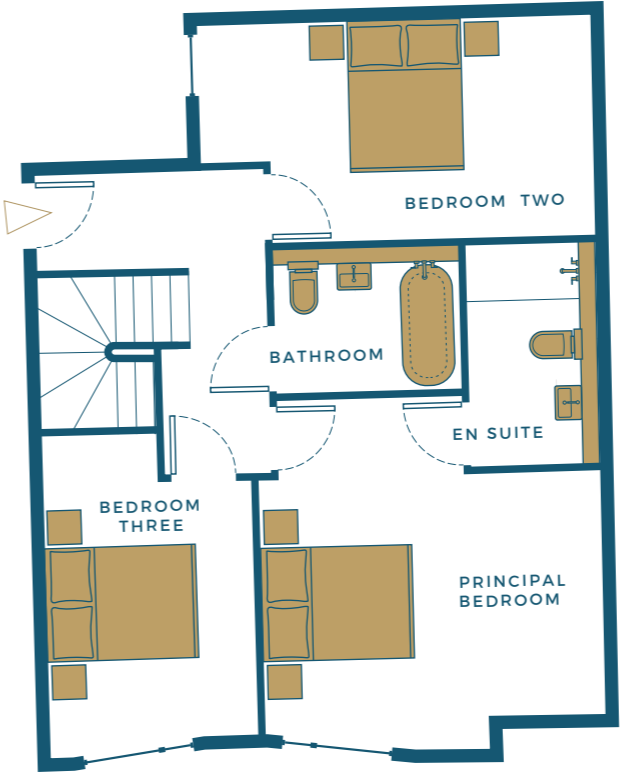
UPSTAIRS



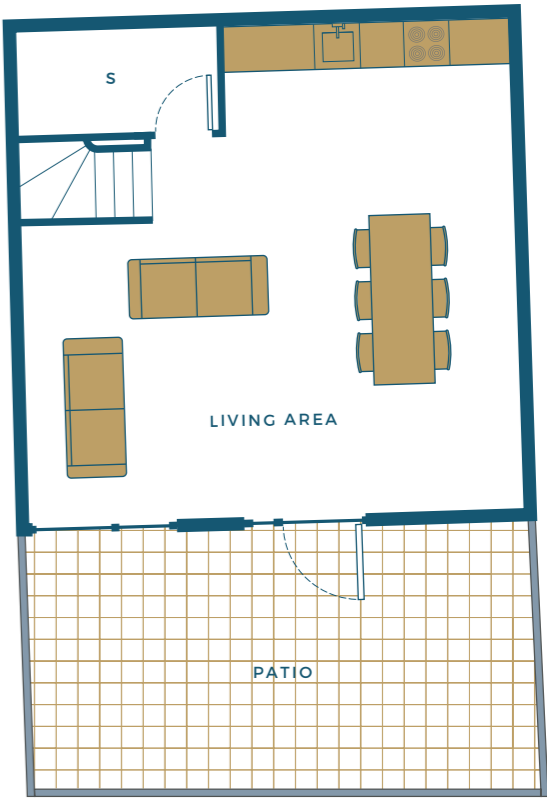
DOWNSTAIRS



UPSTAIRS



DOWNSTAIRS



GROUND FLOOR



LOWER GROUND FLOOR

INTERNAL AREA (APPROX)
85.0 sq. m / 915 sq. ft.

LIVING AREA
7.18 m x 6.30 m /
23'6" x 20'8"

PRINCIPAL BEDROOM
4.40 m x 4.05 m /
14'5" x 13'3"

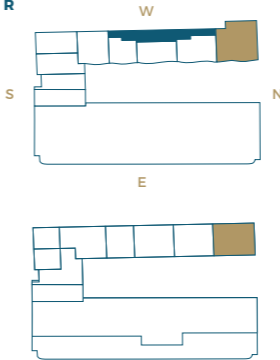
BEDROOM TWO
4.25 m x 2.74 m /
13'11" x 8'11"

BATHROOM
1.70 m x 2.45 m /
5'7" x 8'0"

OUTDOOR SPACE
18.58 sq. m / 200 sq. ft.

FLOOR
Ground &
Lower Ground Floor

GROUND FLOOR



LOWER GROUND FLOOR

INTERNAL AREA (APPROX)
100.33 sq. m /
1080 sq. ft.

LIVING AREA
6.54 m x 6.30 m /
21'5" x 20'8"

PRINCIPAL BEDROOM
4.67 m x 4.49 m /
15'3" x 14'8"

EN SUITE
2.46 m x 1.48 m /
8'0" x 4'8"

BEDROOM TWO
5.14 m x 2.84 m /
16'10" x 9'3"

BEDROOM THREE
4.14 m x 2.72 m /
13'6" x 8'11"

BATHROOM
1.70 m x 2.45 m /
5'7" x 8'0"

OUTDOOR SPACE
14.86 sq. m / 160 sq. ft.

FLOOR
Ground &
Lower Ground Floor

UT - UTILITIES | S - STORAGE

This information is for guidance only and does not form any part of any contract or constitute a warranty. Kitchen and bathroom layouts are indicative only.

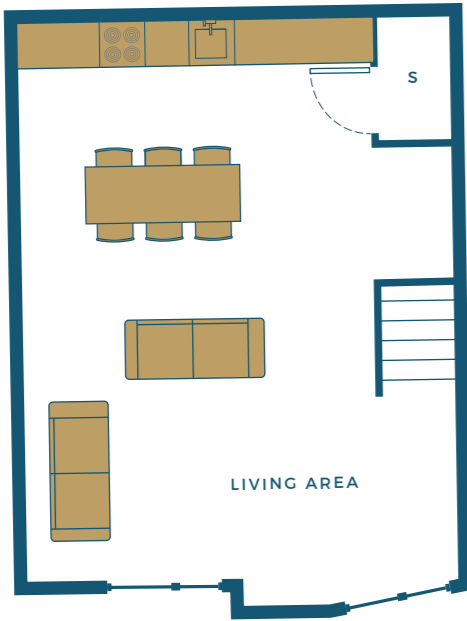
UT - UTILITIES | S - STORAGE

This information is for guidance only and does not form any part of any contract or constitute a warranty. Kitchen and bathroom layouts are indicative only.

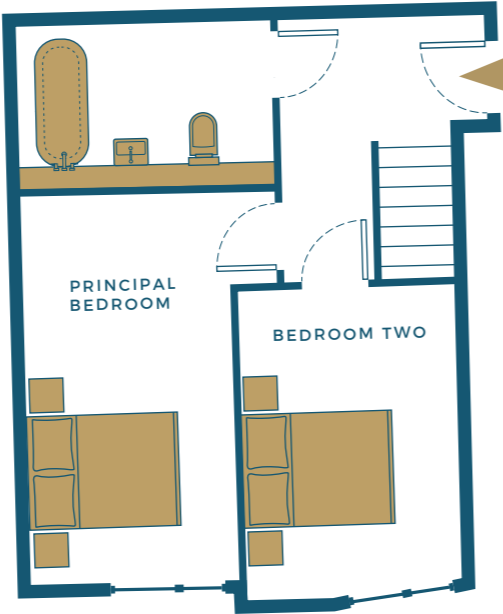


6 ROX BRIGHTON

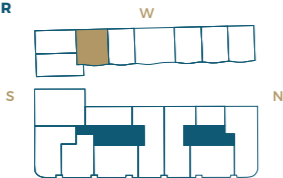
UPSTAIRS



DOWNSTAIRS



SECOND FLOOR



FIRST FLOOR



INTERNAL AREA (APPROX)
83.61 sq. m / 900 sq. ft.

LIVING AREA
6.51 m x 5.17 m /
21'4" x 16'11"

PRINCIPAL BEDROOM
5.06 m x 3.44 m /
16'7" x 11'3"

FLOOR
Second & First Floor

BEDROOM TWO
4.08 m x 2.92 m /
13'4" x 9'6"

BATHROOM
1.70 m x 3.20 m /
5'7" x 10'6"

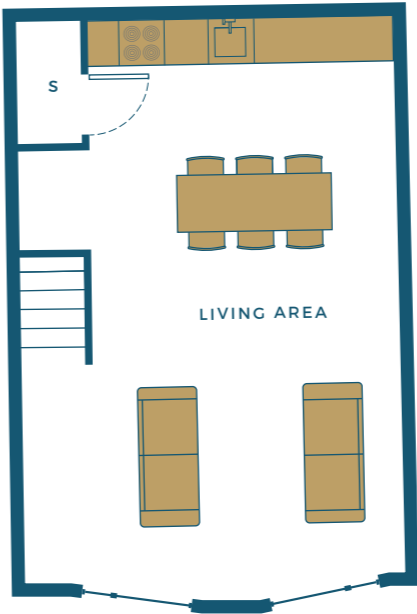
UT - UTILITIES | S - STORAGE

This information is for guidance only and does not form any part of any contract or constitute a warranty. Kitchen and bathroom layouts are indicative only.

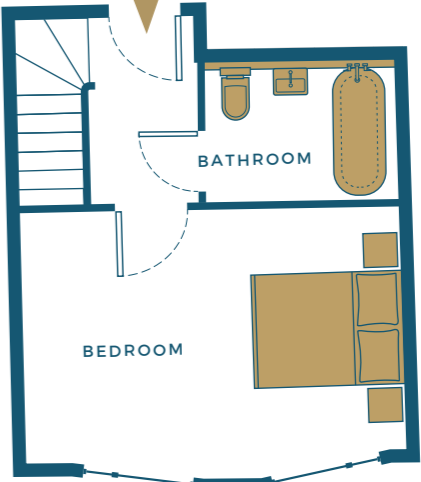


7 ROX BRIGHTON

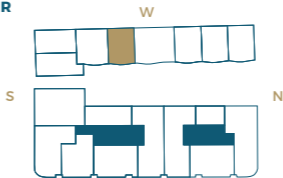
UPSTAIRS



DOWNSTAIRS



SECOND FLOOR



FIRST FLOOR



INTERNAL AREA (APPROX)
64.10 sq. m / 690 sq. ft.

LIVING AREA
6.51 m x 4.81 m /
21'4" x 15'9"

BEDROOM
4.97 m x 3.37 m /
16'3" x 11'0"

FLOOR
Second & First Floor

BATHROOM
1.70 m x 2.45 m /
5'7" x 8'0"

UT - UTILITIES | S - STORAGE

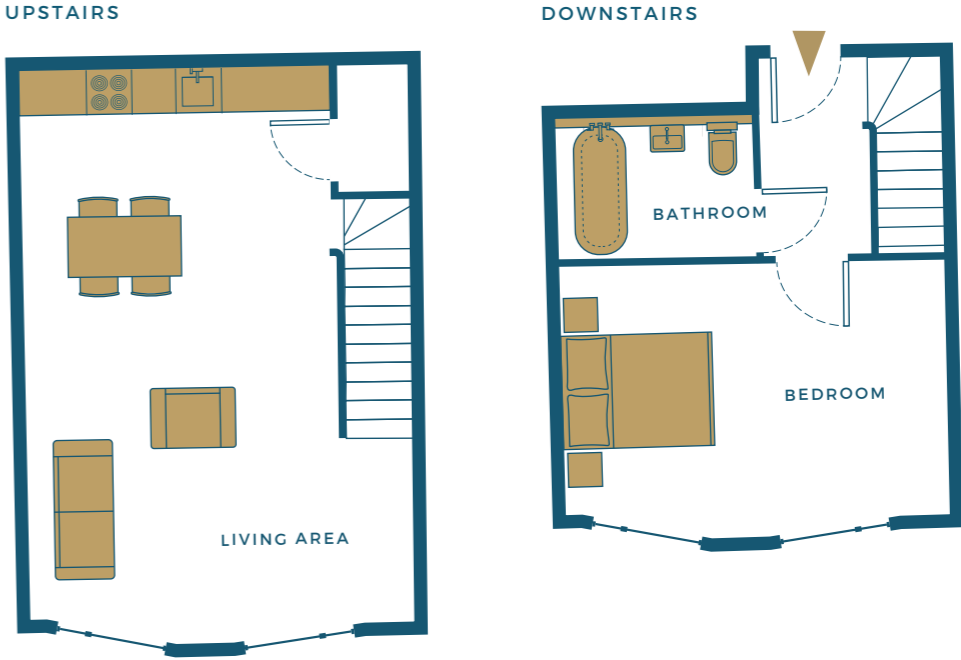
This information is for guidance only and does not form any part of any contract or constitute a warranty. Kitchen and bathroom layouts are indicative only.



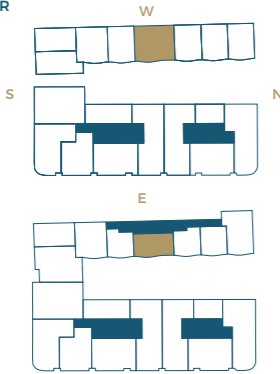
8 ROX BRIGHTON



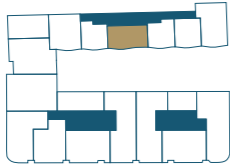
9 ROX BRIGHTON



SECOND FLOOR



FIRST FLOOR



INTERNAL AREA (APPROX)
88.25 sq. m / 950 sq. ft

BEDROOM TWO
4.97 m x 2.80 m /
16'3" x 9'2"

FLOOR
Second & First Floor

LIVING AREA
7.21 m x 7.32 m /
23'65" x 24'01"

BATHROOM
1.70 m x 2.45 m /
5'7" x 8'0"

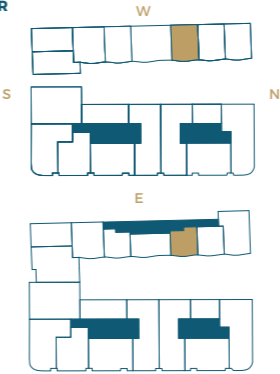
PRINCIPAL BEDROOM
4.52 m x 3.25 m /
14'9" x 10'7"

WC
1.20 m x 1.35 m /
3'11" x 4'5"

UT - UTILITIES | S - STORAGE

This information is for guidance only and does not form any part of any contract or constitute a warranty. Kitchen and bathroom layouts are indicative only.

SECOND FLOOR



FIRST FLOOR



INTERNAL AREA (APPROX)
63.17 sq. m / 680 sq. ft.

BATHROOM
1.70 m x 2.45 m /
5'7" x 8'0"

LIVING AREA
6.51 m x 4.63 m /
21'4" x 15'2"

FLOOR
Second & First Floor

BEDROOM
4.95 m x 3.39 m /
16'2" x 11'1"

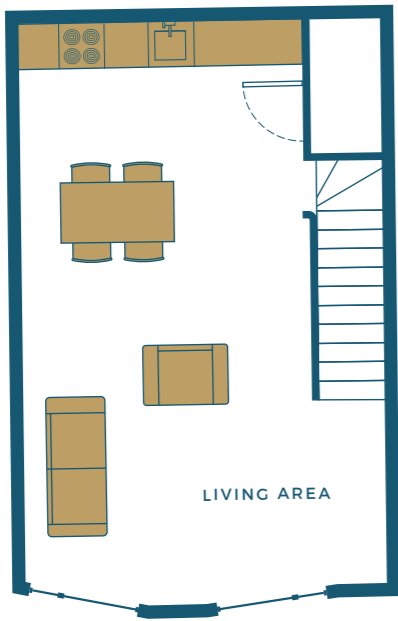
UT - UTILITIES | S - STORAGE

This information is for guidance only and does not form any part of any contract or constitute a warranty. Kitchen and bathroom layouts are indicative only.

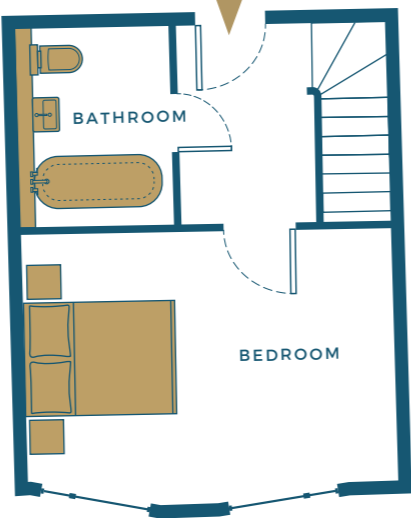


10 ROX BRIGHTON

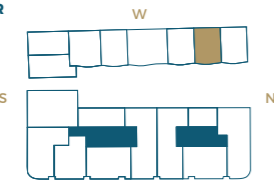
UPSTAIRS



DOWNSTAIRS



SECOND FLOOR



FIRST FLOOR



INTERNAL AREA (APPROX)
63.17 sq. m / 680 sq. ft.

LIVING AREA
6.51 m x 4.48 m /
21'4" x 14'8"

BEDROOM
4.86 m x 3.38 m /
15'11" x 11'1"

BATHROOM
1.80 m x 2.60 m /
5'10" x 8'6"

FLOOR
Second & First Floor

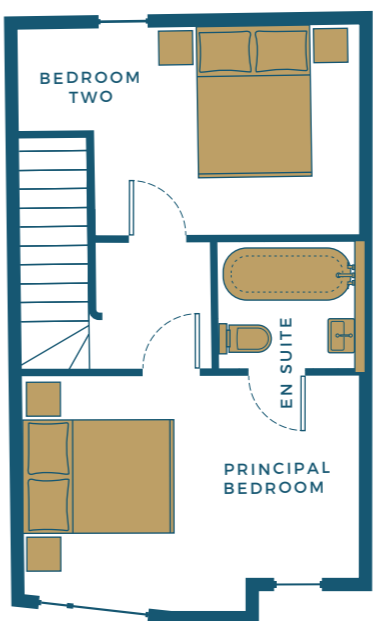
UT - UTILITIES | S - STORAGE

This information is for guidance only and does not form any part of any contract or constitute a warranty. Kitchen and bathroom layouts are indicative only.

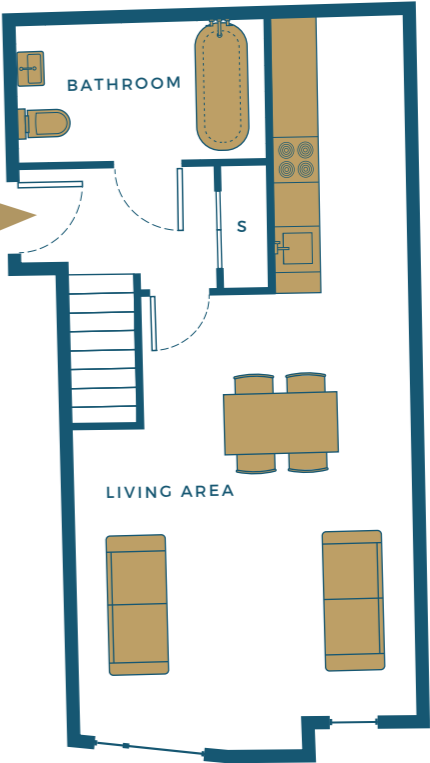


11 ROX BRIGHTON

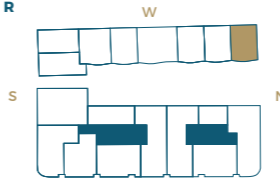
UPSTAIRS



DOWNSTAIRS



SECOND FLOOR



FIRST FLOOR



INTERNAL AREA (APPROX)
76.18 sq. m / 820 sq. ft.

LIVING AREA
9.41 m x 4.56 m /
30'10" x 14'11"

PRINCIPAL BEDROOM
4.12 m x 2.44 m /
13'6" x 8'0"

EN SUITE
1.60 m x 1.67 m /
5'2" x 5'5"

BEDROOM TWO
4.12 m x 2.40 m /
13'6" x 7'10"

BATHROOM
1.60 m x 3.00 m /
5'2" x 9'10"

FLOOR
Second & First Floor

UT - UTILITIES | S - STORAGE

This information is for guidance only and does not form any part of any contract or constitute a warranty. Kitchen and bathroom layouts are indicative only.



CONNECTED AT THE HEART OF IT ALL

LOCATED IN THE HEART OF THE CITY, THE ROX DEVELOPMENT IS PERFECT FOR A STROLL TO THE BEACH, BARS, SHOPS AND RESTAURANTS. WITHIN A SHORT WALK OF ALL TRANSPORT AMENITIES, ROX IS THE PERFECT PLACE TO CALL HOME.

Brighton & Hove is a cosmopolitan city which exudes an irresistible buzz and vibrance. The arts are an intrinsic part of Brighton life and the renowned Theatre Royal, Brighton Dome, Duke Of York's Art House and Brighton Museum are a stroll away. The city regularly hosts exhibitions and festivals including the annual Brighton Festival, which is one of Europe's largest art events.

The relaxed bohemian atmosphere of the nearby North Laine offers a melting pot of thriving culture; mixing chic vintage boutiques, avant-garde artistry and colourful pubs around the orient style spectacle of the Brighton Pavilion. This unique location is renowned for its diverse mix of shops, stylish cafés and restaurants.

