



South Point, Emerald Quay, Shoreham Beach West Sussex BN42 4GG
Guide Price £265,000

South Point, Emerald Quay, Shoreham Beach, West Sussex BN42 4GG

The Property & Area

Located in South Point which is part of the Emerald Quay development in Shoreham-by-Sea, this cleverly designed three-bedroom first-floor flat offers an excellent opportunity for families, professionals, or investors seeking a property with modern amenities and a prime location.

The flat is thoughtfully laid out to maximise space and functionality. Upon entering, you are welcomed into the hallway that leads on to an inviting open-plan living space that seamlessly integrates the lounge and kitchen. The kitchen is modern and well-equipped, featuring sleek units and integrated appliances, making it ideal for everyday use.

The property boasts three bedrooms, one with built in wardrobes, ensuring ample accommodation for a growing family or the flexibility to create a home office or guest room. The family bathroom provides a comfortable and contemporary space for relaxation.

One of the standout features of this property is the range of exclusive facilities available to residents. These include a swimming pool, gym, and a function room that can be hired for private events, adding significant value and convenience to your lifestyle.

In addition to the attractive interior and amenities, the flat benefits from an allocated parking space, offering practicality and peace of mind. The property will also come with a new lease upon completion, ensuring a secure and hassle-free investment for the new owner.

The location of this flat is another key highlight. South Point is situated just a short walk from Shoreham Beach First School, making it an excellent choice for families with young children. The high street, with its range of shops, cafes, and amenities, is only 0.6 miles away, while Shoreham's mainline railway station is under a mile from the property, providing excellent transport links to Brighton, London, and beyond. For those seeking outdoor activities, the proximity to the beach, river, and local parks offers endless opportunities to explore and enjoy.

The flat is presented in good condition throughout, ready for the new owner to move in and start enjoying all that it has to offer. Combining modern living with a host of additional benefits and an enviable location, this property is not to be missed.

Schedule your viewing today to fully appreciate the lifestyle and convenience this three-bedroom flat in Shoreham-by-Sea has to offer. Call us on 01273 661 577 for more information or to arrange a viewing.

Material Information

Tenure - Leasehold

Service Charges - Estate Charge 2025 - £986.20 / Block

Maintenance - £911.64 TOTAL SERVICE CHARGES 2025 - £1,897.84

Ground Rent - £100 pa

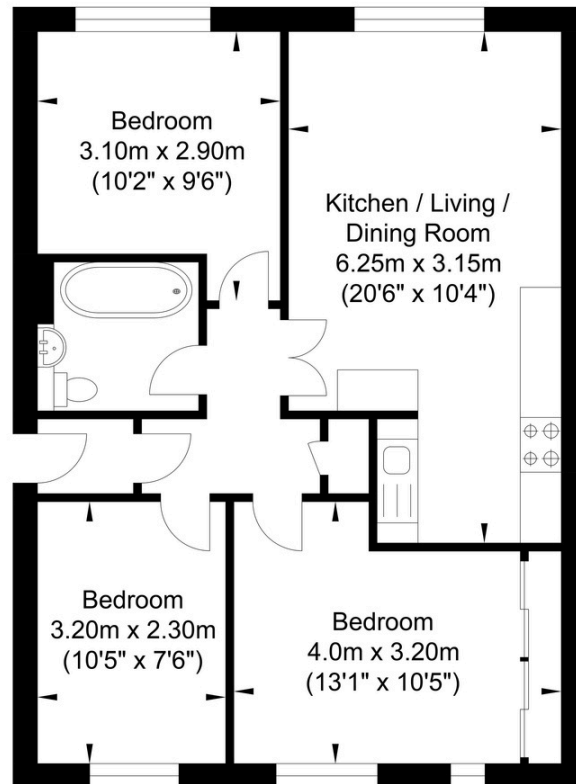
Lease Length - 125 Years from 1st January 1988

Council Tax Band - C



Floorplan

Emerald Quay, Shoreham-by-Sea



Ground Floor
Approximate Floor Area
616.23 sq ft
(57.25 sq m)

Approximate Gross Internal Area = 57.25 sq m / 616.23 sq ft
Illustration for identification purposes only, measurements are approximate, not to scale.



Energy Performance Certificate

Score	Energy rating	Current	Potential
92+	A		
81-91	B		83 B
69-80	C		
55-68	D	63 D	
39-54	E		
21-38	F		
1-20	G		



Oakley

Your Sussex Property Expert

Shoreham Property Hub

01273 661 577

6 Brunswick Road, Shoreham BN43 5WB

www.oakleyproperty.com

shoreham@oakleyproperty.com

We also have offices in:

Lewes

Brighton & Hove



Please note:

These details have been produced in good faith and are believed to be accurate based upon the information supplied but they are not intended to form part of a contract. All statements contained in these particulars as to this property are made without responsibility on the part of Oakley, the vendors or lessors and are NOT to be relied on as statements or representations of fact. Any intending purchasers must satisfy themselves by inspection or otherwise as to the correctness of each of the statements contained in these particulars. The vendors, Oakley and any person who work in their employment do not have any authority to make or give any representation or warranty. The floor plan is for illustrative purposes only and the accuracy cannot be relied upon or guaranteed and no responsibility is taken for an error, omission or mis-statement. The total floor area shown has been taken from the EPC.