

Lesser Foxholes, Shoreham by Sea, BN43 5NT
Offers Over £550,000

Lesser Foxholes, Shoreham by Sea, BN43 5NT

The Property & Area

Situated in the highly desirable North Shoreham area of Shoreham, this spacious three-bedroom detached home combines practicality with a serene setting, making it an ideal choice for families or those seeking a comfortable lifestyle. With its generous living spaces, modern amenities, and superb location backing onto the South Downs, this property truly offers the best of both worlds.

Upon entering the home, you are welcomed by a large enclosed porch leading into a spacious entrance hallway. The ground floor layout has been thoughtfully designed, featuring a convenient ground-floor W.C. and a bright and airy lounge diner, perfect for entertaining or family gatherings. The lounge seamlessly flows into a conservatory, which can have a multitude of uses, providing a versatile additional living space that can be enjoyed year-round. The fitted kitchen, also located on the ground floor, offers ample storage and workspace, catering to the needs of any home cook, while the double bedroom on this level ensures accessibility and flexibility for buyers at all stages of life.

The first floor of the property features two further double bedrooms, each offering generous proportions and natural light. There is also a modern family bathroom on the first floor.

The property's exterior is equally impressive. The rear garden, backing onto the South Downs, is both private and scenic, offering an ideal space for outdoor relaxation or entertaining. The garden has been well-maintained, completely private, and its attractive layout enhances the overall appeal of the home. Parking will never be an issue, with private off-street parking for multiple vehicles and the added benefit of a garage/workshop equipped with both light and power, making it perfect for storage or potential hobby use.

Situated in Lesser Foxholes, this property enjoys a prime location in Shoreham, with easy access to local amenities, excellent transport links, and the stunning South Downs National Park. Whether you're taking a leisurely walk in nature or along the river Adur, hosting friends in the spacious lounge diner, or simply enjoying the tranquillity of your garden, this property offers a lifestyle that's hard to beat.

This fantastic detached home is full of potential and ready to welcome its new owners. Don't miss the opportunity to make it yours. Enquire today on 01273 661 577 for further details or to arrange a viewing.

Material Information

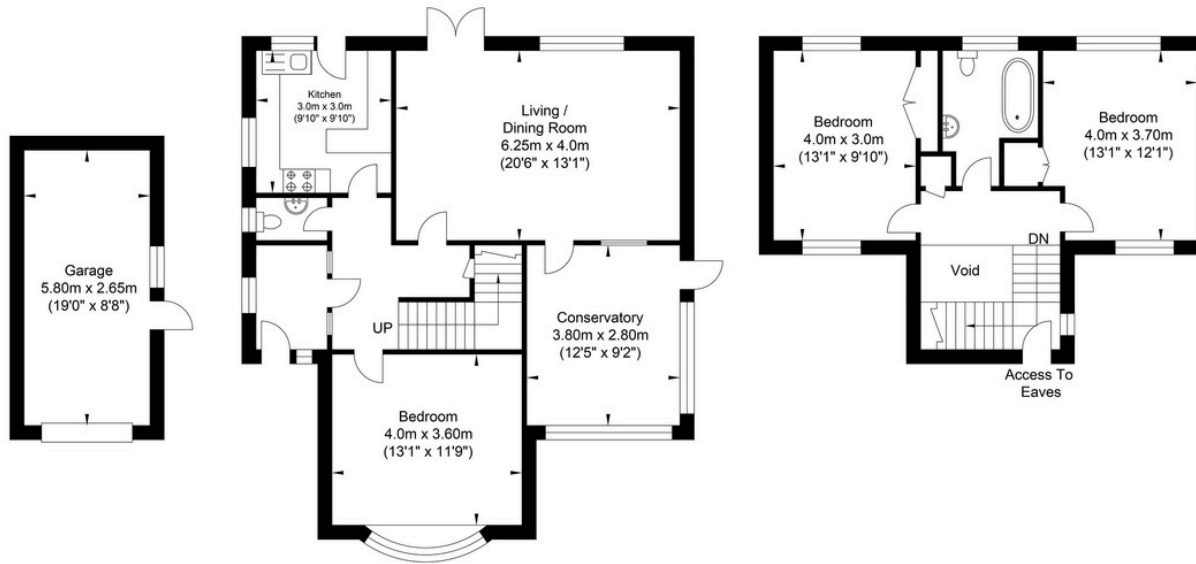
Tenure - Freehold

Residents Estate Management Charge - £280.00 Per Annum

Council Tax Band - E



Lesser Foxholes, Shoreham-by-Sea



Garage
Approximate Floor Area
165.44 sq ft
(15.37 sq m)

Ground Floor
Approximate Floor Area
821.93 sq ft
(76.36 sq m)

First Floor
Approximate Floor Area
457.14 sq ft
(42.47 sq m)

Approximate Gross Internal Area (Excluding Garage) = 118.83 sq m / 1279.07 sq ft
Illustration for identification purposes only, measurements are approximate, not to scale.

Energy Performance Certificate

Score	Energy rating	Current	Potential
92+	A		
81-91	B		
69-80	C		74 C
55-68	D	56 D	
39-54	E		
21-38	F		
1-20	G		



Oakley

Your Sussex Property Expert

Shoreham Property Hub

01273 661 577

6 Brunswick Road, Shoreham BN43 5WB

www.oakleyproperty.com

shoreham@oakleyproperty.com

We also have offices in:

Lewes

Brighton & Hove

Scan to watch the video tour

Get in touch to book a viewing or market valuation of your own property



Please note:

These details have been produced in good faith and are believed to be accurate based upon the information supplied but they are not intended to form part of a contract. All statements contained in these particulars as to this property are made without responsibility on the part of Oakley, the vendors or lessors and are NOT to be relied on as statements or representations of fact. Any intending purchasers must satisfy themselves by inspection or otherwise as to the correctness of each of the statements contained in these particulars. The vendors, Oakley and any person who work in their employment do not have any authority to make or give any representation or warranty. The floor plan is for illustrative purposes only and the accuracy cannot be relied upon or guaranteed and no responsibility is taken for an error, omission or mis-statement. The total floor area shown has been taken from the EPC.