



Mariners Close, Shoreham Beach, BN43 5LU
Offers Over - £450,000

Mariners Close, Shoreham Beach, BN43 5LU

The Property & Area

Welcome to Mariners Close on Shoreham Beach!

This beautiful 4 bedroom detached house in Mariners Close offers ample space, modern features, and an enviable beachside location.

Tucked away in a quiet cul-de-sac, this extended home has all the key features that make it an ideal home for a growing family. As you approach the house, the private off-street parking and integral garage provide convenience and security. The low-maintenance west facing rear garden is perfect for outdoor entertaining and gardening.

The extended kitchen and the good-sized lounge both have access out to the rear garden too. The kitchen provides ample space for cooking, dining, and socialising with family and friends. The lounge is a comfortable space for relaxing.

The ground floor W.C. and a family bathroom on the first floor ensure convenience for the whole family. The four bedrooms offer flexibility and space for individual needs. The extended layout of this home makes it perfect for modern family living.

One of the standout features of this excellent property is its proximity to the Beach. Just a short stroll away, you can enjoy the relaxed beach lifestyle that Shoreham-By-Sea has to offer.

It is also conveniently located to the High Street and Town Centre, allowing easy access to a range of amenities including shops, restaurants, and cafes. Shoreham Mainline Railway Station is nearby, ensuring hassle-free commuting for those working in nearby towns or wanting access to London.

Contact us today on 01273 661 577 to arrange a viewing.

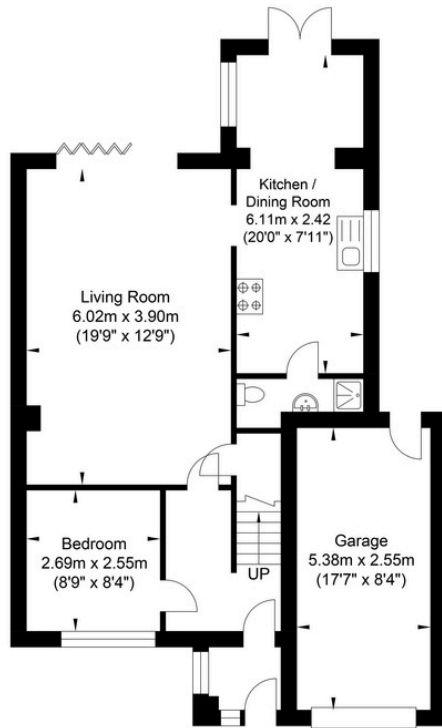
Material Information

Tenure: Freehold

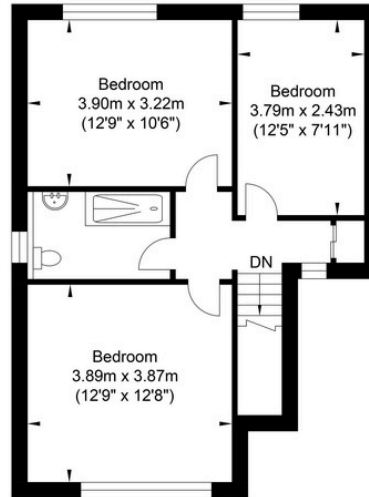
Council Tax: E



Mariners Close, Shoreham-by-Sea



Ground Floor
Approximate Floor Area
733.02 sq ft
(68.10 sq m)



First Floor
Approximate Floor Area
525.17 sq ft
(48.79 sq m)

Approximate Gross Internal Area = 116.89 sq m / 1258.19 sq ft
Illustration for identification purposes only, measurements are approximate, not to scale.



Oakley

Your Sussex Property Expert

Shoreham Property Hub
01273 661 577
6 Brunswick Road, Shoreham BN43 5WB
www.oakleyproperty.com
shoreham@oakleyproperty.com

We also have offices in:
Lewes
Brighton & Hove

Scan to watch the video tour

Get in touch to book a viewing or market
valuation of your own property

Energy Performance Certificate

Score	Energy rating	Current	Potential
92+	A		
81-91	B		
69-80	C	69 C	84 B
55-68	D		
39-54	E		
21-38	F		
1-20	G		



Please note:

These details have been produced in good faith and are believed to be accurate based upon the information supplied but they are not intended to form part of a contract. All statements contained in these particulars as to this property are made without responsibility on the part of Oakley, the vendors or lessors and are NOT to be relied on as statements or representations of fact. Any intending purchasers must satisfy themselves by inspection or otherwise as to the correctness of each of the statements contained in these particulars. The vendors, Oakley and any person who work in their employment do not have any authority to make or give any representation or warranty. The floor plan is for illustrative purposes only and the accuracy cannot be relied upon or guaranteed and no responsibility is taken for an error, omission or mis-statement. The total floor area shown has been taken from the EPC.

