



Queens Place, Shoreham by Sea, West Sussex, BN43 5AA

Offers Over £525,000

Queens Place, Shoreham by Sea, West Sussex, BN43 5AA

The Property & Area

Are you on the lookout for a charming Victorian house in the heart of Shoreham? Look no further than this fantastic property on Queens Place. With its immaculate condition and a range of period features, this house is sure to capture your heart.

Upon entering, you are greeted by a welcoming tiled hallway that leads on to a sunny lounge diner, perfect for relaxing or entertaining guests. The extended kitchen to the rear of the property offers additional space which is almost double the size of the original kitchen space. Whether you enjoy cooking or simply appreciate a well-designed kitchen, this space is sure to impress.

The first floor comprises two spacious double bedrooms, providing ample room for a growing family or accommodating guests. The large bathroom is a real highlight, featuring a bath and a separate walk-in shower. You'll enjoy the convenience and luxury that this well-appointed bathroom offers. There is also access to a good sized loft storage space from the first floor landing.

For those in need of storage solutions, the property's great cellar is a godsend. Whether you have extra belongings or prefer a space to keep your wine collection at the perfect temperature, the cellar provides versatile storage options.

One of the standout features of this property is the attractive west-facing rear garden. Imagine lazing in the sunshine or hosting barbecues and gatherings in this delightful outdoor space. With the sun setting in the west, you'll have the perfect setting for enjoying warm evenings as the sun sets right into your back garden.

Location is everything, and this house offers a prime one. Situated just a short walk from Shoreham Mainline Railway Station, commuting will be a breeze. Whether you work in nearby cities or travel frequently, the convenience of the mainline station cannot be overstated.

In addition to its excellent transport links, the property is located on an extremely popular town centre street. You'll have all the amenities and attractions that Shoreham-By-Sea has to offer right at your fingertips. From an array of shopping options to trendy cafes, restaurants and bars, as well as the Ropetackle arts center. You'll find everything you need and more.

Don't miss out on this fantastic opportunity to make this immaculate extended Victorian house your new home. With its fantastic features, convenient location, and attractive garden, it's the perfect place to create lasting memories. Contact us today to arrange a viewing and make Queens Place your next home address.

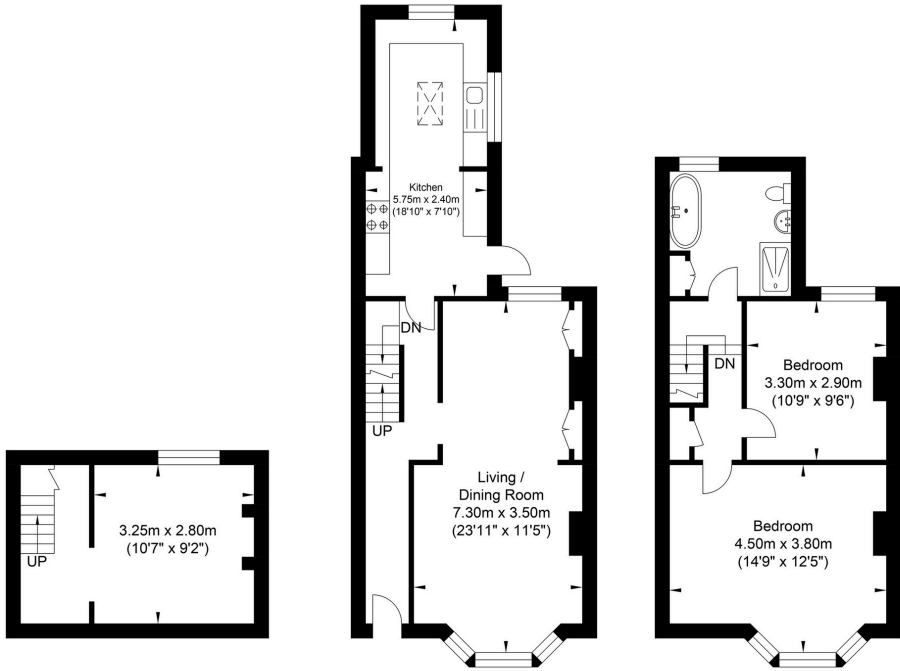
Contact us today to arrange a viewing and take the first step towards a vibrant coastal lifestyle.

01273 661577 shoreham@oakleyproperty.com



Floorplan

Queens Place, Shoreham



Lower Ground Floor
Approximate Floor Area
198.80 sq ft
(18.47 sq m)

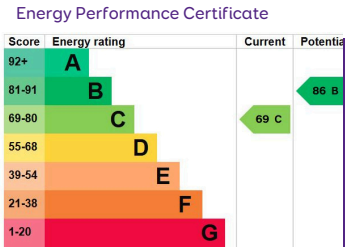
Ground Floor
Approximate Floor Area
488.14 sq ft
(45.35 sq m)

First Floor
Approximate Floor Area
409.13 sq ft
(38.01 sq m)

Approximate Gross Internal Area = 101.83 sq m / 1096.08 sq ft
Illustration for identification purposes only, measurements are approximate, not to scale.



Agents Notes
Tenure - Freehold
Council Tax: C



Oakley

Your Sussex Property Expert

Shoreham Property Hub
01273 661 577
6 Brunswick Road, Shoreham BN43 5WB
www.oakleyproperty.com
shoreham@oakleyproperty.com

We also have offices in:
Lewes
Brighton & Hove
The London Office



Property Video

Get in touch to book a viewing or valuation of your own property



Please note:
These details have been produced in good faith and are believed to be accurate based upon the information supplied but they are not intended to form part of a contract. All statements contained in these particulars as to this property are made without responsibility on the part of Oakley, the vendors or lessors and are NOT to be relied on as statements or representations of fact. Any intending purchasers must satisfy themselves by inspection or otherwise as to the correctness of each of the statements contained in these particulars. The vendors, Oakley and any person who work in their employment do not have any authority to make or give any representation or warranty. The floor plan is for illustrative purposes only and the accuracy cannot be relied upon or guaranteed and no responsibility is taken for an error, omission or mis-statement. The total floor area shown has been taken from the EPC.