



**Temple Street, Brighton, BN1 3BH**  
Asking Price £700,000







# Temple Street, Brighton, BN1 3BH

Welcome to Temple Street in the West Hill conservation area of central, Brighton, where you will find a truly enchanting three-storey house built circa 1832. This Grade II listed property exudes elegance and offers flexible living arrangements for families or individuals seeking a comfortable and stylish home. With its prime location on a no-through road, just minutes away from the seafront, this house provides the perfect opportunity to live in one of the most desirable areas in the city.

Step inside and be captivated by the striking features that greet you at the entrance. The part glazed front door, adorned with an attractive stained glass panel above, invites you into a hallway characterized by painted floorboards, wood panelling, and a wooden balustrade adorning the stairs.

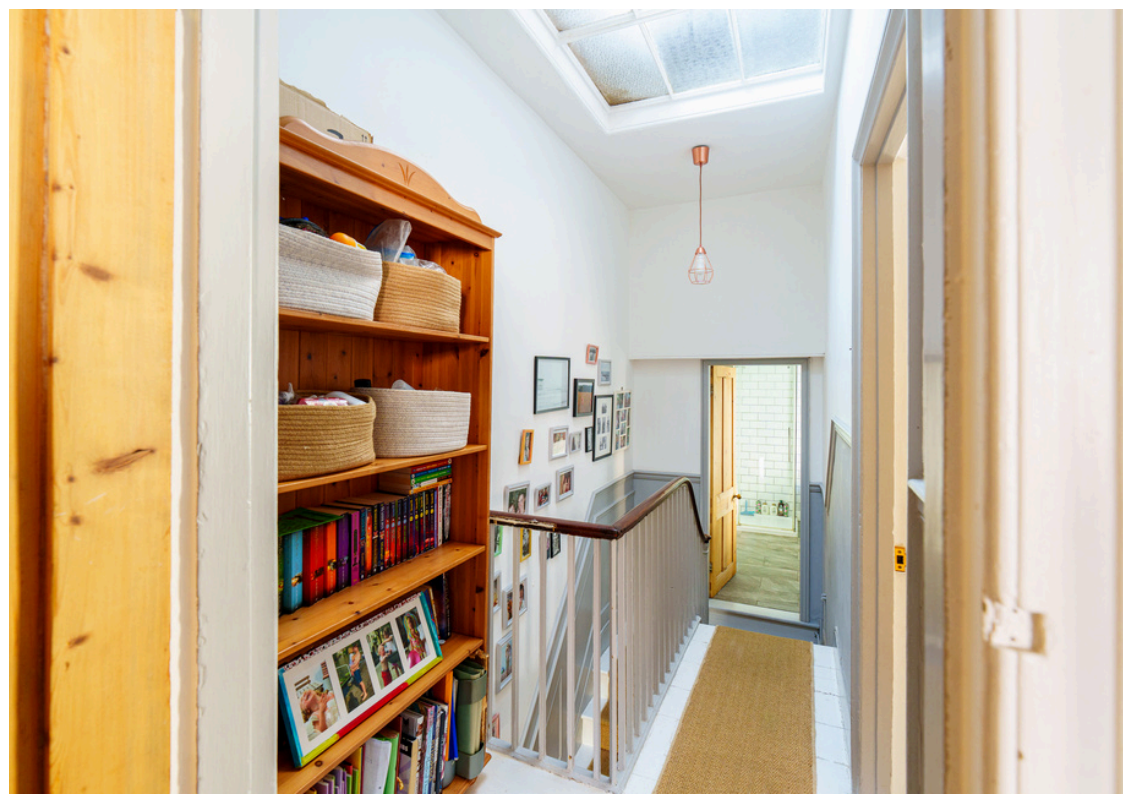
As you make your way into the house, you will be drawn to the inviting lounge. Here, a cast iron working fireplace with a wooden surround and slate hearth becomes the focal point, exuding warmth and charm. Multiple paned windows in the bay allow natural light to fill the room, illuminating the exposed wood floor and highlighting the built-in cupboards and shelves nestled into the chimney recesses.

Beyond the lounge, an additional reception room beckons, offering versatile use as a third bedroom or a second living space. This room retains its period charm with a fireplace, exposed wood floorboards, and built-in cupboards. The sash window overlooks a delightful patio garden, flooding the room with natural light and creating a tranquil atmosphere.

Continue exploring this remarkable property, and you will discover a well-appointed kitchen dining room. Equipped with a range style cooker and boasting functional wood work surfaces, this space offers ample room for culinary delights. A plethora of cupboards and drawers provide practical storage solutions, while a lovely seating area in a box bay allows for relaxation and contemplation.









## Temple Street, Brighton, BN1 3BH

Ascending to the first floor, you will find a luxury bathroom that exudes elegance. Complete with a roll top bath, a separate shower enclosure, and a wash basin on a marble topped stand, this bathroom is a sanctuary of comfort and refinement. A built-in cupboard provides convenient storage, while the period touches add a touch of class.

The first floor also houses two double bedrooms, both featuring fireplaces that add character and warmth. The landing, complete with a skylight window, enhances the overall ambience and provides natural light throughout the space.

Descending to the lower floor, you will find an office space that could easily be utilised as a guest room. With plenty of built-in storage cupboards, this room offers functional organisation solutions, ensuring a clutter-free home. Additionally, the lower floor boasts convenient space and plumbing for a washing machine and dryer, making laundry a breeze.

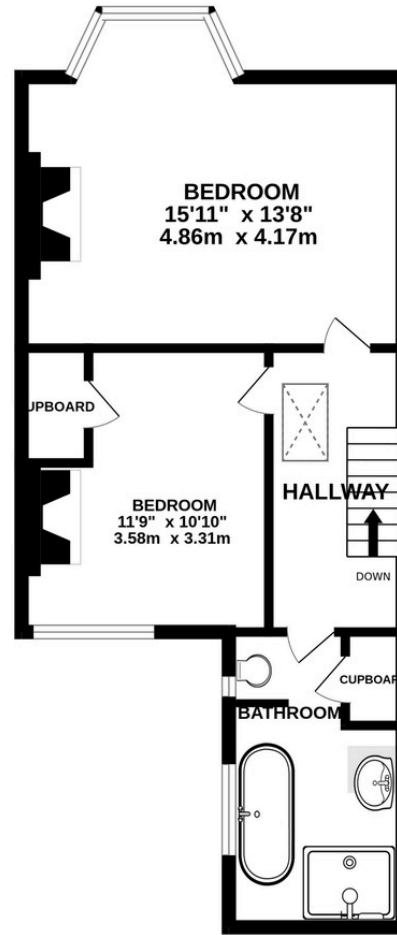
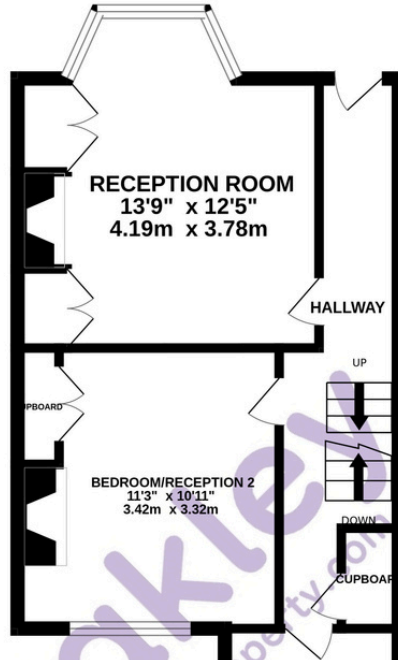
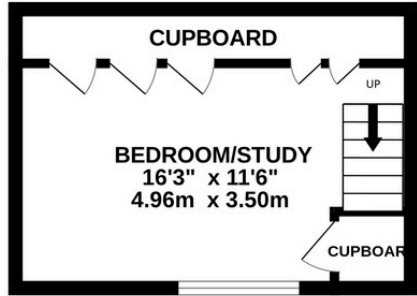
Completing this incredible house is its west-facing walled patio garden, a tranquil oasis where you can relax and enjoy the elements. This outdoor space is perfect for alfresco dining, gardening, or simply soaking up the sun.

Aside from the stunning features of the property itself, the location is equally impressive. Temple Street offers excellent proximity to a wide range of amenities. Within walking distance, you will find the renowned Waitrose supermarket, high street shopping options, and an array of entertainment and dining venues. For those commuting, Brighton railway station is nearby, providing easy access to other parts of the city and beyond.

Do not miss this opportunity to own a piece of Brighton's history. With its charming character, flexible living arrangements, and desirable location, this property is truly the epitome of an ideal home. Arrange a viewing today and let this enchanting house capture your heart.



LOWER GROUND



FIRST FLOOR



GROUND FLOOR

TOTAL FLOOR AREA : 1194sq.ft. (110.9 sq.m.) approx.

Made with Metropix ©2025



**Oakley**

Your Sussex Property Expert

Brighton & Hove Office  
01273 688 881  
3-6 North Road, Brighton BN1 1YA  
www.oakleyproperty.com  
sales@oakleyproperty.com

We also have offices in:  
Shoreham by Sea  
Lewes Town & Country



Video Tour

Get in touch to book a viewing or valuation of your own property

Agents Notes:

Tenure Freehold  
Council Tax Band E



Please note:  
These details have been produced in good faith and are believed to be accurate based upon the information supplied but they are not intended to form part of a contract. All statements contained in these particulars as to this property are made without responsibility on the part of Oakley, the vendors or lessors and are NOT to be relied on as statements or representations of fact. Any intending purchasers must satisfy themselves by inspection or otherwise as to the correctness of each of the statements contained in these particulars. The vendors, Oakley and any person who work in their employment do not have any authority to make or give any representation or warranty. The floor plan is for illustrative purposes only and the accuracy cannot be relied upon or guaranteed and no responsibility is taken for an error, omission or mis-statement. The total floor area shown has been taken from the EPC.