



**Fairfield Close, Shoreham by Sea, West Sussex, BN43 6BH**  
Guide Price £500,000 - £525,000

# Fairfield Close, Shoreham by Sea, West Sussex, BN43 6BH

## The Property & Area

Welcome to this beautifully extended and refurbished semi-detached chalet bungalow, offering ample space and great features for comfortable family living. Situated in the sought-after Fairfield Close, Shoreham, this property is a true gem that ticks all the boxes.

As you step inside, you will be greeted by a bright and spacious hallway that sets the tone for the rest of the house. The ground floor boasts a cosy reception room to the front and 2nd reception room / Kitchen Diner to the rear, allowing for flexibility in creating a family lounge and a formal dining area and entertaining space. With neutral decor and large windows, natural light fills every corner.

The heart of this home is an impressive extended kitchen diner, providing a perfect space for entertaining and family gatherings. The modern kitchen is equipped with high-quality appliances, ample storage, and sleek countertops, making the cooking experience a delight. The dining area can comfortably fit a large table and sofa, creating a warm and inviting atmosphere for meals.

With three double bedrooms plus a study spread across the property, everyone in the family will have their own personal space. The principal bedroom, situated on the first floor, has a range of fitted wardrobes. There are 3 additional rooms, 2 doubles and one single / study, all boast generous proportions and abundant natural light. The current owners have tastefully decorated each room, creating a cozy and relaxing atmosphere.

A family bathroom with a bath upstairs and a ground floor W.C. & fitted utility room cater to the needs of every family member, providing convenience and comfort. Both spaces are modern and well-maintained.

Step outside into the attractive North facing rear garden with an open East & West aspect giving sunshine to the garden in the mornings and evenings, a lovely space for relaxing and unwinding. The garden boasts 2 patio areas, perfect for al fresco dining or enjoying a morning coffee. The lawned area provides a safe and enjoyable space for children to play.

Parking will never be a concern with the private off-street parking available for several cars, ensuring ease and security for all residents. The property is in great condition throughout, ready for you to move in without any hassle. The location offers easy access to amenities, with the Holmbush Shopping Centre just 0.7 miles away and Shoreham Mainline Railway Station within a convenient 1.4 miles distance as well as access to a good bus service at the end of the road

Families will appreciate the close proximity to the highly-regarded Shoreham Academy Secondary School as well as Shoreham College, ensuring quality education is easily accessible. The property is also within reach of the stunning coastline and picturesque South Downs and the River Adur.

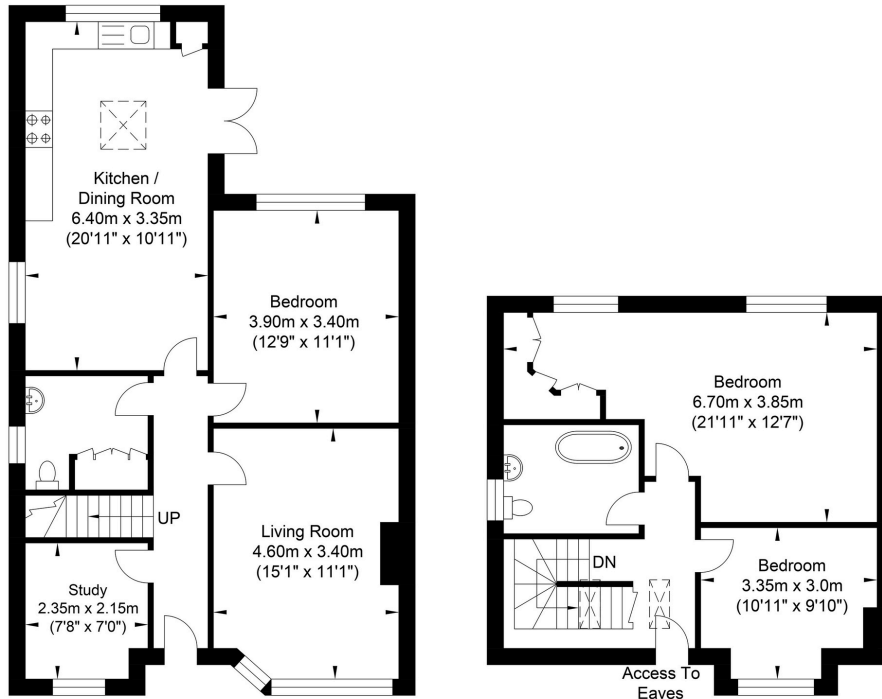
Don't miss out on the opportunity to make this spacious 4 bedroom chalet bungalow your new home. Contact us today to arrange a viewing and see for yourself the wonderful lifestyle this property has to offer.

Contact us on 01273 661577 [shoreham@oakleyproperty.com](mailto:shoreham@oakleyproperty.com)



# Floorplan

## Fairfield Close, Shoreham-by-Sea



Ground Floor  
Approximate Floor Area  
745.07 sq ft  
(69.22 sq m)

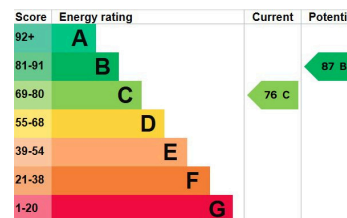
First Floor  
Approximate Floor Area  
464.67 sq ft  
(43.17 sq m)

Approximate Gross Internal Area = 112.39 sq m / 1209.75 sq ft

Illustration for identification purposes only, measurements are approximate, not to scale.

Agents Notes  
Tenure - Freehold  
Council Tax: C

### Energy Performance Certificate



# Oakley

Your Sussex Property Expert

Shoreham Property Hub  
01273 661 577  
6 Brunswick Road, Shoreham BN43 5WB  
www.oakleyproperty.com  
shoreham@oakleyproperty.com

We also have offices in:  
Lewes  
Brighton & Hove



Property Video

Get in touch to book a viewing or valuation of your own property



**Please note:**

These details have been produced in good faith and are believed to be accurate based upon the information supplied but they are not intended to form part of a contract. All statements contained in these particulars as to this property are made without responsibility on the part of Oakley, the vendors or lessors and are NOT to be relied on as statements or representations of fact. Any intending purchasers must satisfy themselves by inspection or otherwise as to the correctness of each of the statements contained in these particulars. The vendors, Oakley and any person who work in their employment do not have any authority to make or give any representation or warranty. The floor plan is for illustrative purposes only and the accuracy cannot be relied upon or guaranteed and no responsibility is taken for an error, omission or mis-statement. The total floor area shown has been taken from the EPC.