



St Leonards Road, Hove, BN3 4QQ

Asking Price £700,000



St Leonards Road, Hove, BN3 4QQ

A stunning three bedroom semi detached house perfectly located, offering convenience and luxury living at its finest.

As you step into the property, you'll instantly be captivated by the elegant and beautifully presented interior. The spacious through lounge/dining room boasts a large bay window, allowing natural light to flood in and creating a bright and welcoming atmosphere. Imagine cosy evenings by the log burner, creating a warm and inviting ambiance for entertaining guests or simply relaxing with your loved ones.

The modern fitted kitchen/breakfast room is a true highlight of this home. With stylish countertops, ample storage space, and state-of-the-art appliances, this is a space where you'll love to cook and dine. The underfloor heating adds that extra touch of luxury, keeping your toes warm on chilly mornings and creating a comfortable environment throughout the year.

The property offers three generous double bedrooms, each designed with both comfort and style in mind. You'll have plenty of space to create your own sanctuary in each room, and the striking decoration really adds a feel of quality throughout.







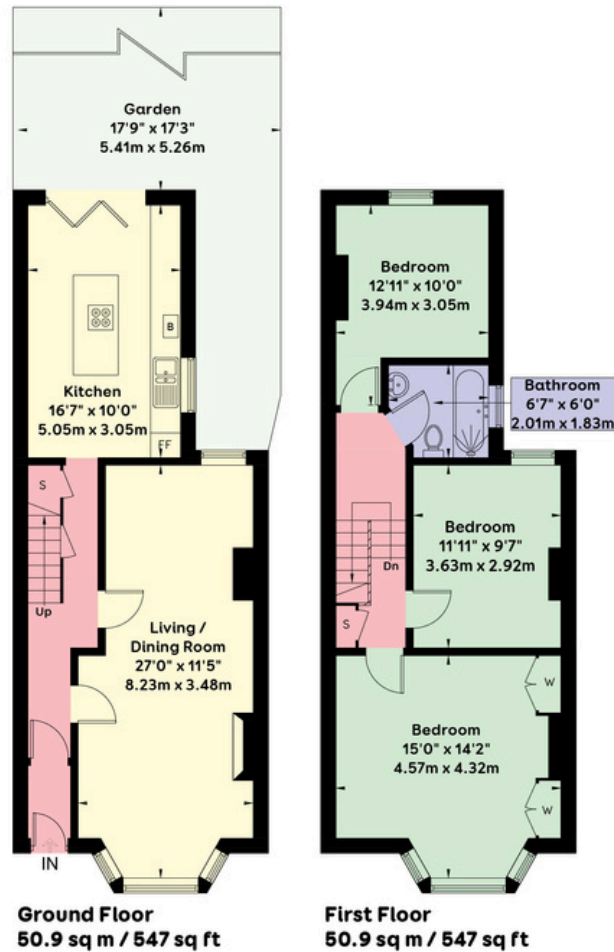
St Leonards Road, Hove, BN3 4QQ

The modern fitted bathroom is designed to perfection, featuring sleek fixtures and fittings. Indulge in a luxurious soak in the bathtub or enjoy a refreshing shower after a long day - the choice is yours.

Other key features of this property include gas central heating, ensuring you stay warm and cosy during the colder months, and a total living space of 1095 square feet, providing ample room for all your needs.

Location is everything, and this property offers the best of both worlds. With Hove Lagoon just a stone's throw away, spend sunny days strolling by the water, enjoying water activities, or simply soaking up the sun on the beach. The convenient proximity to the mainline railway station makes commuting a breeze, connecting you to Brighton and beyond.

Don't miss the opportunity to own this exceptional home in Hove. With its stunning features, prime location, and luxurious interior, it's an opportunity you deserve.



APPROXIMATE GROSS INTERNAL AREA = 101.8 sq m / 1095 sq ft

Floor plan is for illustration and identification purposes only and is not to scale.
Plots, gardens, balconies and terraces are illustrative only and excluded from all area calculations. All site plans are for illustration purposes only and are not to scale.
This floor plan has been produced in accordance with Royal Institution of Chartered Surveyors' International Property Standards 2 (IPMS2).

Copyright Bespoke Property Marketing 2025



Agents Notes
Tenure Freehold
Council Tax Band D

Energy Performance Certificate

Score	Energy rating	Current	Potential
92+	A		
81-91	B		
69-80	C		
55-68	D	61 D	78 C
39-54	E		
21-38	F		
1-20	G		



Oakley

Your Sussex Property Expert

Brighton & Hove Office
01273 688 881
3-6 North Road, Brighton BN1 1YA
www.oakleyproperty.com
sales@oakleyproperty.com

We also have offices in:
Shoreham by Sea
Lewes Town & Country



A new way of marketing property

Get in touch to book a viewing or valuation of your own property



Please note:

These details have been produced in good faith and are believed to be accurate based upon the information supplied but they are not intended to form part of a contract. All statements contained in these particulars as to this property are made without responsibility on the part of Oakley, the vendors or lessors and are NOT to be relied on as statements or representations of fact. Any intending purchasers must satisfy themselves by inspection or otherwise as to the correctness of each of the statements contained in these particulars. The vendors, Oakley and any person who work in their employment do not have any authority to make or give any representation or warranty. The floor plan is for illustrative purposes only and the accuracy cannot be relied upon or guaranteed and no responsibility is taken for an error, omission or mis-statement. The total floor area shown has been taken from the EPC.