

60 Beach Green, Shoreham by Sea, BN43 5YA

Guide Price £800,000

60 Beach Green, Shoreham by Sea, BN43 5YA

The Property & Area

Welcome to Shoreham Beach! Discover the beauty of Beach Green, Shoreham-By-Sea, with this exquisite, detached family home offering four bedrooms, two bathrooms, and a superb open-plan entertaining space.

Perfectly situated within a sought-after location on Shoreham Beach, this house presents a wonderful opportunity for a long-term family home. You're instantly welcomed by a modern open space with the kitchen overlooking the garden. Its contemporary style seamlessly blends aesthetics with functionality, offering ample storage space and high-quality fixtures and fittings. The open plan living area creates a sense of space and freedom, making it an ideal place to make full use of the integrated bar for family gatherings and entertaining!

The ground floor also has a mini salon which could be turned into a useful home office, or utility room. There is a useful 2nd office area under the large staircase which has a light and airy feel about it. The house has a warm and cozy feel thanks to its fantastic log burner in the lounge and there are large windows throughout bringing in lots of natural light.

The four bedrooms in this remarkable home provide ample space for all the family. The main south-facing bedroom is a great size, which has its own en-suite bathroom, and a beautiful feature window looking towards the beach huts, which provides a lovely view to wake up to. The additional double bedrooms are ideal for family members needing their own space to relax.

Outside, there is a low-maintenance lawned garden and patio area. Whether you wish to BBQ, create a beautiful outdoor play area for children, or simply enjoy the space, this garden provides the perfect backdrop for all your needs.

A particular feature of the house is its location, being positioned next to the park at Beach Green and the foreshore just over the road, giving you easy access to all the best parts of Shoreham Beach! Situated on a favoured corner plot, this home provides a large garage with front and rear up and over doors, providing convenience for parking and storage. Plenty of off-street parking to the front adds to the ease of living and ensures that you and your family will never struggle to find a space to park!

Material Information:

Tenure: Freehold

Council Tax: F



Beach Green, Shoreham-by-Sea



Oakley

Your Sussex Property Expert

Shoreham Property Hub

01273 661 577

6 Brunswick Road, Shoreham BN43 5WB

www.oakleyproperty.com

shoreham@oakleyproperty.com

We also have offices in:

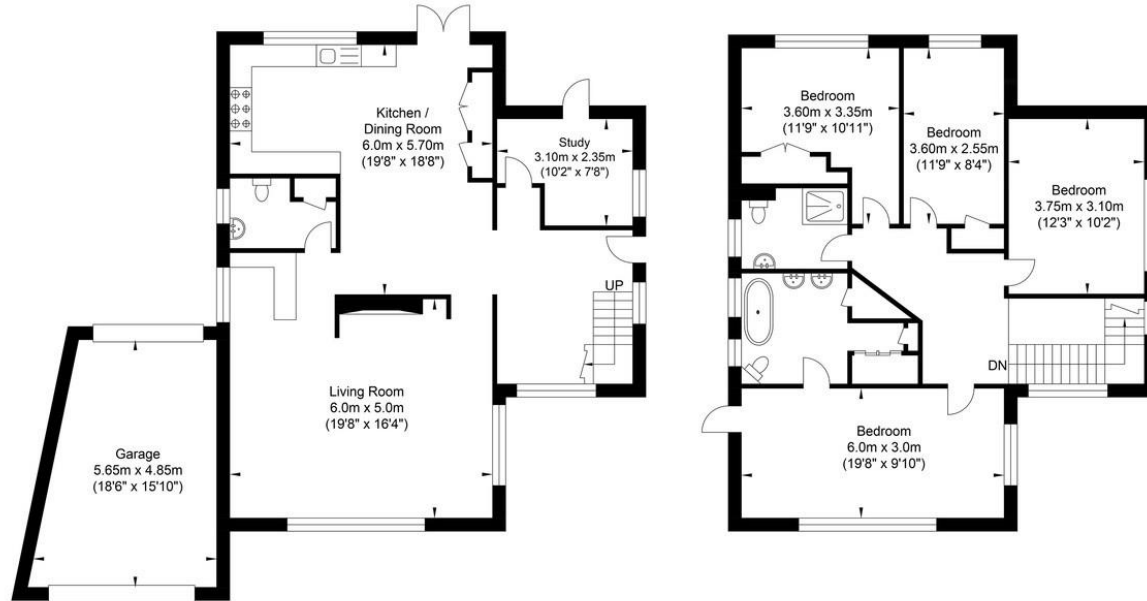
Lewes

Brighton & Hove



Scan the QR code to watch the video

01273 6615577



Ground Floor
Approximate Floor Area
1146.03 sq ft
(106.47 sq m)

First Floor
Approximate Floor Area
863.91 sq ft
(80.26 sq m)

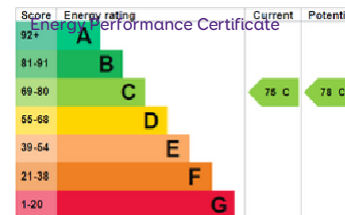
Approximate Gross Internal Area = 186.73 sq m / 2009.94 sq ft

Illustration for identification purposes only, measurements are approximate, not to scale.

Material Information:

Tenure: Freehold

Council Tax: F



Please note:
These details have been produced in good faith and are believed to be accurate based upon the information supplied but they are not intended to form part of a contract. All statements contained in these particulars as to this property are made without responsibility on the part of Oakley.



the vendors or lessors and are NOT to be relied on as statements or representations of fact. Any intending purchasers must satisfy themselves by inspection or otherwise as to the correctness of each of the statements contained in these particulars. The vendors, Oakley and any person who work in their employment do not have any authority to make or give any representation or warranty. The floor plan is for illustrative purposes only and the accuracy cannot be relied upon or guaranteed and no responsibility is taken for an error, omission or mis-statement. The total floor area shown has been taken from the EPC.