



Stepney Court, Fleet Street, Brighton, BN1 4GS
Asking Price £500,000

Stepney Court, Fleet Street, Brighton, BN1 4GS

Don't miss out on this spacious 3-bedroom apartment in Fleet Street, with modern amenities, close proximity to transport, and rental income!

Stunning 3-Bedroom Apartment in Prime Fleet Street Location, Ideal for City Living!

Looking for the perfect property in the heart of Fleet Street? Look no further! This stunning 3-bedroom apartment is a dream come true, offering modern living spaces, superb location, and great rental income potential. Situated in a modern block, this fourth-floor apartment boasts 1163 Sq.Ft/ 108 Sq.M. of well-designed living space, providing ample room for relaxation and entertainment.

The apartment welcomes you with a spacious reception area, flooded with natural light, creating a warm and inviting atmosphere. The open-plan layout seamlessly connects the reception area to the kitchen, making it ideal for hosting. The kitchen itself is a delight, complete with sleek countertops, modern appliances, and plenty of storage space to keep everything organized.

As you explore further, you'll discover the three generously sized bedrooms, each offering a retreat after a long day. The main bedroom features an ensuite shower room, ensuring privacy and convenience. The additional bathroom is elegantly designed.

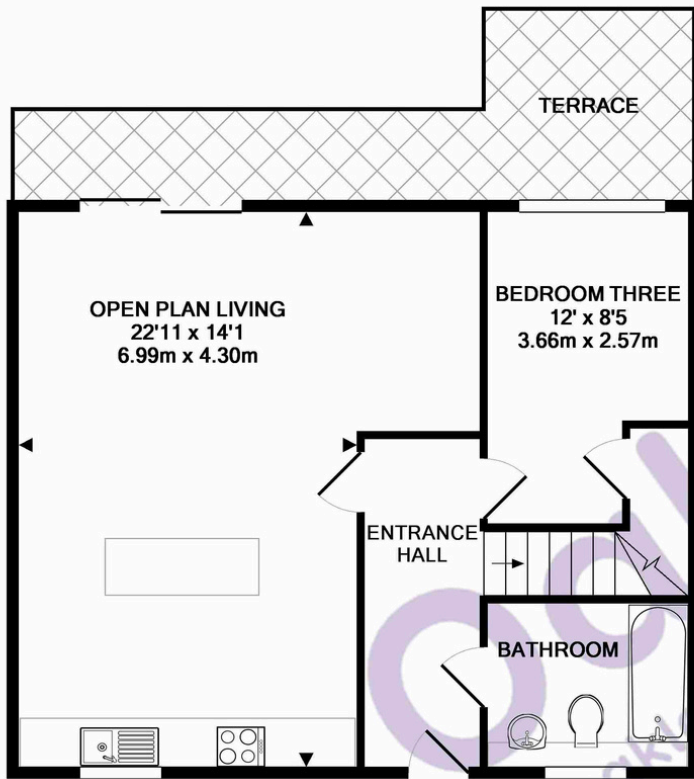
One of the standout features of this apartment is its unbeatable location. Situated close to Brighton Mainline Railway Station. The central location also means you're just a stone's throw away from the vibrant North Laine, famous for its vibrant atmosphere, independent shops, and eclectic dining options. Enjoy the best of what Brighton has to offer right at your doorstep!

Currently, the apartment is let under the terms of an Assured Shorthold Tenancy, generating a rental income of £2,175 per month. This makes it an excellent investment opportunity for those looking to add to their property portfolio.

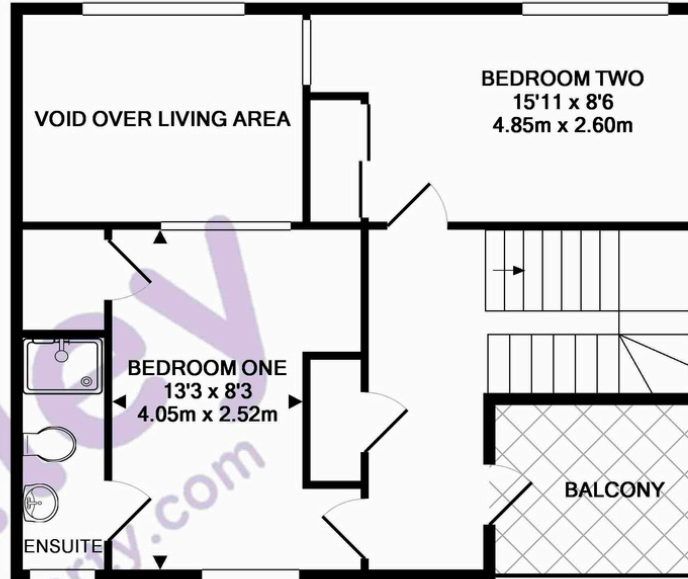
In addition to its favourable location and rental income, this apartment also offers the convenience and security of a lift, allowing easy access to the fourth floor. With modern finishes and a well-maintained communal area, this block provides a stylish and comfortable living environment for its residents.

If you're searching for a vibrant city lifestyle with all the comforts of contemporary living, this 3-bedroom apartment in Fleet Street is the perfect place. Don't miss out on this fantastic opportunity.





THIRD FLOOR



FORTH FLOOR

STEPNEY COURT, 8 FLEET STREET, BRIGHTON, EAST SUSSEX, BN1 4GS
TOTAL APPROX. FLOOR AREA 1163 SQ.FT. (108.0 SQ.M.)

Whilst every attempt has been made to ensure the accuracy of the floor plan contained here, measurements of doors, windows, rooms and any other items are approximate and no responsibility is taken for any error, omission, or mis-statement. This plan is for illustrative purposes only and should be used as such by any prospective purchaser. The services, systems and appliances shown have not been tested and no guarantee as to their operability or efficiency can be given
Made with Metropix ©2018



Oakley

Your Sussex Property Expert

Brighton & Hove Office
01273 688 881
3-6 North Road, Brighton BN1 1YA
www.oakleyproperty.com
brighton@oakleyproperty.com

We also have offices in:
Shoreham by Sea
Lewes Town & Country
The London Office



A new way of marketing property

Get in touch to book a viewing or valuation of your own property



Please note:
These details have been produced in good faith and are believed to be accurate based upon the information supplied but they are not intended to form part of a contract. All statements contained in these particulars as to this property are made without responsibility on the part of Oakley, the vendors or lessors and are NOT to be relied on as statements or representations of fact. Any intending purchasers must satisfy themselves by inspection or otherwise as to the correctness of each of the statements contained in these particulars. The vendors, Oakley and any person who work in their employment do not have any authority to make or give any representation or warranty. The floor plan is for illustrative purposes only and the accuracy cannot be relied upon or guaranteed and no responsibility is taken for an error, omission or mis-statement. The total floor area shown has been taken from the EPC.

Agents Notes
Tenure Leasehold
137 Year Lease Remaining
Service Charge Approx £5,048.64 Per Annum
Ground Rent Approx £295 Per Annum
Council Tax Band E

Energy Performance Certificate

