



**Osborne Villas, Hove, BN3 2RD**



## Osborne Villas, Hove, BN3 2RD

Discover the captivating charm of this spacious four bedroom Victorian villa located in the desirable Osborne Villas adjacent to Hove Seafront. This exceptional property offers a unique opportunity for those seeking a character-filled home with a touch of modern elegance.

As you step through the front door, be prepared to be enchanted by the period features that contribute to its timeless appeal. The welcoming hallway displays intricate cornices, and polished wooden flooring, evoking a sense of grandeur and nostalgia.

The heart of the house unfolds into a remarkable 26'7 open plan living and dining area. This generous space provides an ideal setting to entertain family and friends, with its abundance of natural light flooding in through the large sash windows. Here, you can relax and unwind, enjoying the warmth emanating from the cosy fireplace, making it the perfect spot for intimate gatherings or lively parties.

The meticulously designed kitchens, not one but two, showcases a blend of classic and contemporary styling. The main kitchen, with its stylish cabinetry and state-of-the-art appliances, is perfect for those who love to experiment and create culinary delights. The second kitchen, brimming with convenience, offers a separate space for any ambitious cook or an opportunity to create a self-contained apartment (subject to consent being obtained). The choices are yours to explore.





## Osborne Villas, Hove, BN3 2RD



There are four generously sized bedrooms, each offering a tranquil escape from the demands of everyday life. The large windows add a touch of grandeur to these bright and inviting spaces.

Continuing with its commitment to luxury, the property boasts two contemporary bathrooms, thoughtfully designed to meet the needs of a modern family. Fitted with elegant fixtures and finishes, they provide a sanctuary for relaxation.

Step outside into the walled rear garden, a secluded oasis offering both privacy and tranquillity. Here, one can enjoy al fresco dining, BBQs, or simply bask in the sun. The well-maintained garden is the perfect outdoor retreat for entertaining guests, or even enjoying a book and a cup of tea in the fresh air.

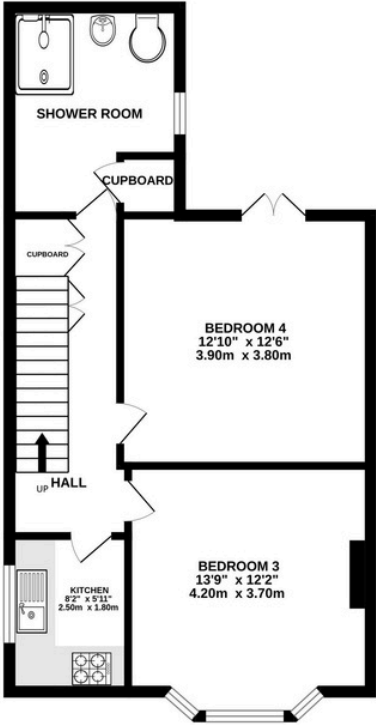
The property is conveniently located within parking zone N. With the addition of being adjacent to Hove Seafront, you will have the opportunity to enjoy long strolls and breathtaking sunsets along the coast at your leisure.

With a generous floor area of approximately 1660 sqft, this Victorian villa offers endless possibilities and immense potential for the discerning buyer. Whether you wish to preserve and enhance the existing charm or explore the option of creating a self-contained apartment, this property invites you to make it your own.

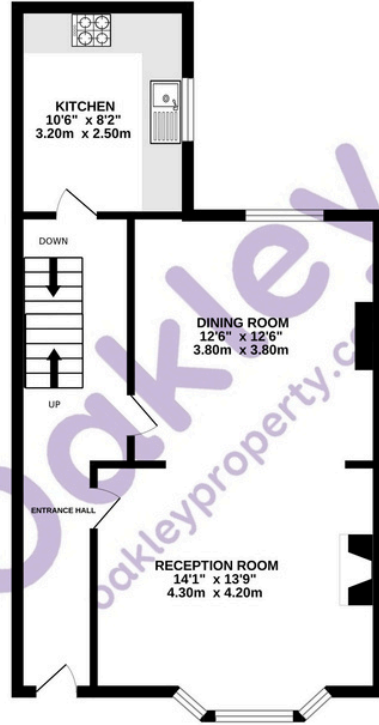
Do not miss the chance to own this remarkable four bedroom Victorian villa, offering a harmonious blend of period features and contemporary comforts in a sought-after location near Hove Seafront.



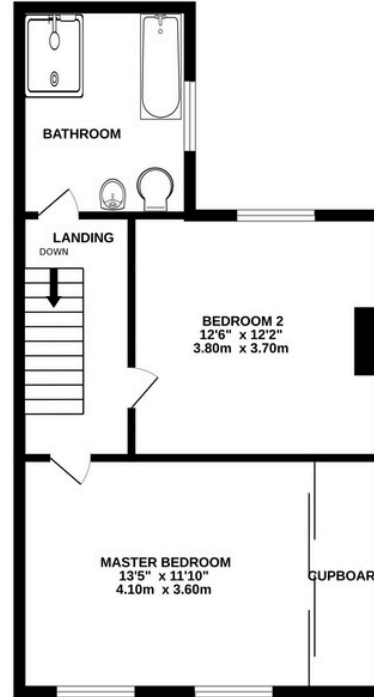
LOWER GROUND FLOOR



GROUND FLOOR



FIRST FLOOR



TOTAL FLOOR AREA : 1660sq.ft. (154.2 sq.m.) approx.  
Made with Metropix ©2024



**Oakley**

Your Sussex Property Expert

Brighton & Hove Office  
01273 688 881  
3-6 North Road, Brighton BN1 1YA  
www.oakleyproperty.com  
brighton@oakleyproperty.com

We also have offices in:  
Shoreham by Sea  
Lewes Town & Country  
The London Office



A new way of marketing property

Get in touch to book a viewing or valuation of your own property



Please note:  
These details have been produced in good faith and are believed to be accurate based upon the information supplied but they are not intended to form part of a contract. All statements contained in these particulars as to this property are made without responsibility on the part of Oakley, the vendors or lessors and are NOT to be relied on as statements or representations of fact. Any intending purchasers must satisfy themselves by inspection or otherwise as to the correctness of each of the statements contained in these particulars. The vendors, Oakley and any person who work in their employment do not have any authority to make or give any representation or warranty. The floor plan is for illustrative purposes only and the accuracy cannot be relied upon or guaranteed and no responsibility is taken for an error, omission or mis-statement. The total floor area shown has been taken from the EPC.

Energy Performance Certificate

Agents Notes	Score	Energy rating	Current	Potential
Tenure Freehold Council Tax Band E	92+	A		
	81-91	B		
	69-80	C		78 C
	55-68	D		
	39-54	E	46 E	
	21-38	F		
	1-20	G		

