

Queens Place, Shoreham by Sea, West Sussex, BN43 5AA
Offers in Excess of £475,000

Queens Place, Shoreham by Sea, West Sussex, BN43 5AA

The Property & Area

If you have been dreaming of owning a delightful period home in Shoreham-By-Sea, this beautiful property on Queens Place is perfect for you. With its charming character, spacious interiors, and convenient location, this stunning house offers an exceptional opportunity to own a forever home.

The first thing you'll notice about this property is its stunning exterior. With beautiful architecture and a classic bay window, this period home boasts an attractive facade that is sure to impress. Step inside, and you will be greeted by a warm and welcoming atmosphere that is characteristic of a house of this era.

As you move through the house, you will find a through lounge diner that is perfect for both everyday living and entertaining guests. The open-plan layout ensures a seamless flow between the reception and dining areas, creating a sociable space that is ideal for hosting parties or enjoying family meals.

The property features two double bedrooms, providing ample space for relaxation and rest. The bedrooms are well-proportioned and are filled with natural light, creating a serene and comfortable environment. Whether you need a guest room, a home office, or simply a place to retreat to, these bedrooms offer endless possibilities.

The large bathroom is a standout feature of this property. With its luxurious bath and separate shower cubicle, you can indulge in a relaxing soak or enjoy a refreshing shower, depending on your mood.

The sunny West-facing garden is flint wall enclosed, whether you want to enjoy your morning coffee on the patio or host summer barbecues with friends and family, this private outdoor space provides the perfect backdrop for outdoor living. The garden is a haven for budding gardeners and offers a great opportunity for those with green fingers.

One of the highlights of this property are the attractive period features from sash windows to the beautiful Aga and original flooring, every aspect of this house exudes charm and character. These features make it a true gem for those who appreciate the historic architecture and unique details that define a period home.

Additional perks of this wonderful property include a heated cellar, which can be used as a workshop or storage space, and its prime location on a hugely popular town centre street. You'll be just a short walk away from Shoreham town Centre with its many independent shops, cafes and restaurants and Shoreham Mainline Railway Station, allowing for easy commuting to Brighton, Worthing, and London. With no onward chain, you can move into your dream home without any delay or hassle.

Overall, this charming period home offers the perfect combination of beauty, comfort, and convenience. Don't miss your chance to own a slice of Shoreham-By-Sea's history and create lasting memories in this delightful property. Contact us today to arrange a viewing and begin your journey to homeownership.

Contact us today to arrange a viewing! 01273 661577
shoreham@oakleyproperty.com



Floorplan

Queens Place, Shoreham-by-Sea



Oakley

Your Sussex Property Expert

Shoreham Property Hub
01273 661 577

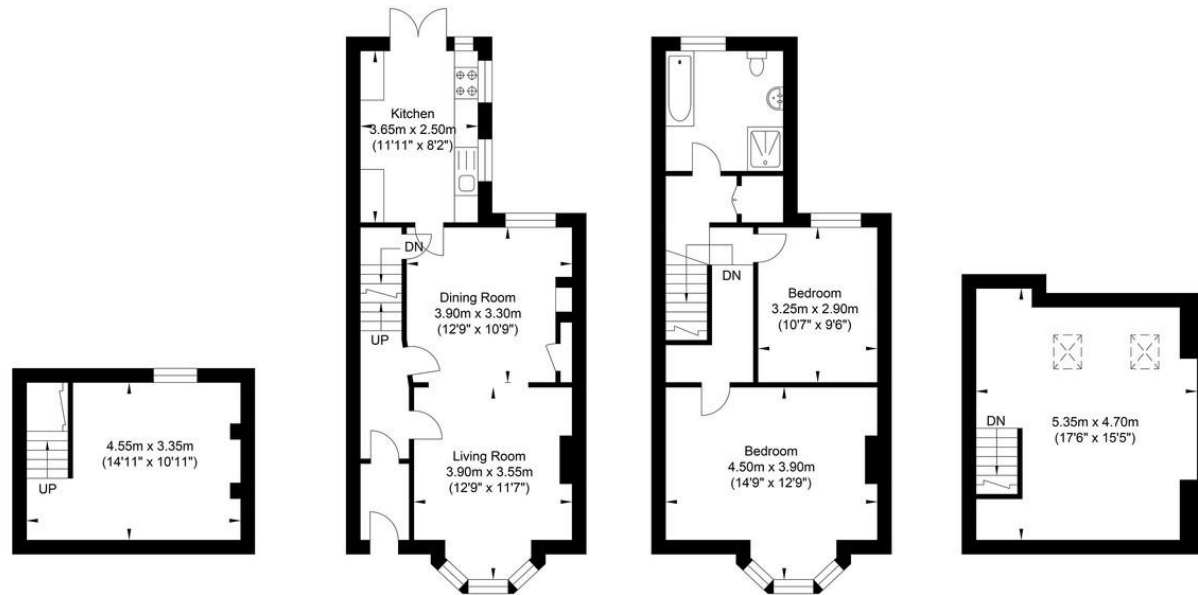
6 Brunswick Road, Shoreham BN43 5WB
www.oakleyproperty.com
shoreham@oakleyproperty.com

We also have offices in:
Lewes
Brighton & Hove
The London Office



Property Video

Get in touch to book a viewing or valuation of your own property



Lower Ground Floor
Approximate Floor Area
164.04 sq ft
(15.24 sq m)

Ground Floor
Approximate Floor Area
437.12 sq ft
(40.61 sq m)

First Floor
Approximate Floor Area
437.12 sq ft
(40.61 sq m)

Second Floor
Approximate Floor Area
255.53 sq ft
(23.74 sq m)



Approximate Gross Internal Area = 120.20 sq m / 1293.82 sq ft
Illustration for identification purposes only, measurements are approximate, not to scale.

Agents Notes

Tenure - Freehold
Council Tax: C

Energy Performance Certificate

| Score | Energy rating | Current | Potential |
|-------|---------------|---------|-----------|
| 92+ | A | | |
| 81-91 | B | | |
| 68-80 | C | | |
| 55-68 | D | 59 D | 79 C |
| 38-54 | E | | |
| 21-38 | F | | |
| 1-20 | G | | |



Please note:

These details have been produced in good faith and are believed to be accurate based upon the information supplied but they are not intended to form part of a contract. All statements contained in these particulars as to this property are made without responsibility on the part of Oakley, the vendors or lessors and are NOT to be relied on as statements or representations of fact. Any intending purchasers must satisfy themselves by inspection or otherwise as to the correctness of each of the statements contained in these particulars. The vendors, Oakley and any person who work in their employment do not have any authority to make or give any representation or warranty. The floor plan is for illustrative purposes only and the accuracy cannot be relied upon or guaranteed and no responsibility is taken for an error, omission or mis-statement. The total floor area shown has been taken from the EPC.

