

Ring Road, Lancing, West Sussex, BN15 0QF

Guide Price £650,000 - £675,000

Ring Road, Lancing, West Sussex, BN15 0QF

The Property & Area

AN EXQUISITE FAMILY HAVEN WITH CAPTIVATING SEA VIEWS IN NORTH LANCING

Are you yearning for a dreamy coastal home that offers a perfect blend of style, space, and superb location? Look no further! Situated in the sought-after Ring Road, Lancing, this stunning detached property awaits a new family to make new memories.

Upon arrival, you'll be instantly captivated by the elegant facade of this gorgeous 4-bedroom house. The property proudly stands tall, offering a charm that sets it apart from the rest. With its elevated position, you can indulge in mesmerizing southerly views towards the sea.

Step inside, and you'll find yourself in a spacious and tastefully decorated hallway, immediately setting the tone for the rest of this remarkable home. As you explore the ground floor, the abundance of space becomes evident. The property boasts two inviting reception rooms, perfect for both relaxation and entertainment. Whether it's snuggling up with a book in the cozy living room or hosting lavish dinner parties in the elegant dining area, this house caters to all your needs.

One of the highlights of the ground floor is the convenient addition of a bedroom and a bathroom, making it ideal for those seeking single-level living or accommodating guests. This versatile space allows you to create a home office, playroom, or any other space that suits your lifestyle.

Head up the staircase, and you'll discover the first floor. Here, three additional well-presented bedrooms beckon, each offering a serene escape from the bustling household. The tastefully designed first-floor shower room ensures convenience and privacy for the family.

The property's allure extends beyond its interiors, with ample outdoor space to enjoy the best of nature. The landscaped rear garden is a marvel, boasting a large patio area enclosed for both privacy and security. Imagine hosting delightful BBQs, basking in the summer sun, or simply unwinding after a long day while taking in the idyllic surroundings. An elevated deck area adds a touch of luxury, providing the perfect spot for morning coffee or evening drinks.

Parking will never be an issue with off-street parking available both to the front and a convenient garage, ensuring your vehicles are secure and easily accessible.

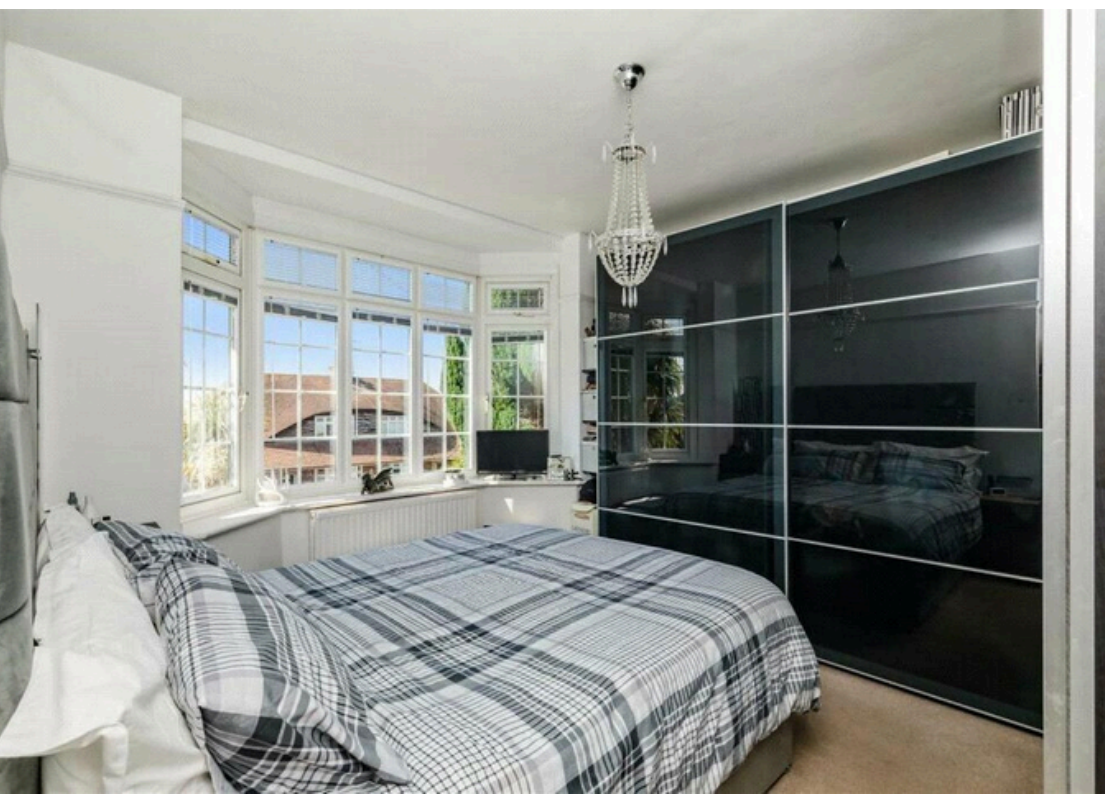
In addition to its outstanding features, this property benefits from modern décor throughout, creating a fresh and inviting atmosphere. The luxurious interior design choices showcase a blend of neutral tones that complement the space's natural light and amplify the feeling of serenity.

The location of this property is extremely popular. North Lancing is renowned for its charm and tranquillity, providing an oasis away from the hustle and bustle while still offering excellent connectivity. Commuters will appreciate the property's easy access to nearby towns and cities, with convenient road links from the A27 and rail links in Lancing Town Centre and access to Lancing Ring and the South downs just up the road from the property.

Not only will you find yourself surrounded by stunning coastal landscapes, but also within close proximity to a plethora of local amenities, including reputable schools, shops, restaurants, and leisure facilities. Everything you need for a fulfilling and enjoyable lifestyle can be found within reach.

Don't miss out on your opportunity to own this exquisite family haven. Arrange a viewing today and let this remarkable North Lancing property steal your heart

Contact us today to arrange a viewing! 01273 661577
/shoreham@oakleyproperty.com



FLOORPLAN



GROUND FLOOR
Approximate Floor Area
830.65 sq ft
(77.17 sq m)



FIRST FLOOR
Approximate Floor Area
498.90 sq ft
(46.35 sq m)



GARAGE
Approximate Floor Area
130.13 sq ft
(12.09 sq m)



Agents Notes

Tenure - Freehold
Council Tax: E

Energy Performance Certificate

Score	Energy rating	Current	Potential
92+	A		
81-91	B		
69-80	C		79 C
55-68	D	65 D	
39-54	E		
21-38	F		
1-20	G		



Oakley

Your Sussex Property Expert

Shoreham Property Hub
01273 661 577
6 Brunswick Road, Shoreham BN43 5WB
www.oakleyproperty.com
shoreham@oakleyproperty.com

We also have offices in:
Lewes
Brighton & Hove



Property Video

Get in touch to book a viewing or valuation of your own property



Please note:
These details have been produced in good faith and are believed to be accurate based upon the information supplied but they are not intended to form part of a contract. All statements contained in these particulars as to this property are made without responsibility on the part of Oakley, the vendors or lessors and are NOT to be relied on as statements or representations of fact. Any intending purchasers must satisfy themselves by inspection or otherwise as to the correctness of each of the statements contained in these particulars. The vendors, Oakley and any person who work in their employment do not have any authority to make or give any representation or warranty. The floor plan is for illustrative purposes only and the accuracy cannot be relied upon or guaranteed and no responsibility is taken for an error, omission or mis-statement. The total floor area shown has been taken from the EPC.

