



Albany Towers, Hove, BN3 2RQ
Asking Price Of £299,000

Albany Towers, Hove, BN3 2RQ

Experience coastal living in this refurbished one bedroom apartment with new kitchen, bathroom, terrace and sea views, perfectly situated in the sought-after Albany Towers, Hove.

We are delighted to present this newly refurbished one-bedroom apartment for sale, offering a modern and comfortable lifestyle. With its favoured seafront location, new kitchen and bathroom, as well as a south-facing terrace, this property is perfect for those seeking a peaceful retreat by the sea.

As you step inside, you will immediately be impressed by the brand-new kitchen, which has been meticulously designed to cater to the needs of a modern homeowner. Featuring sleek modern cabinets, integrated appliances, and ample storage space, this kitchen is as beautiful as it is functional. Whether you're a passionate chef or simply enjoy cooking, this kitchen will undoubtedly inspire you to create culinary masterpieces.

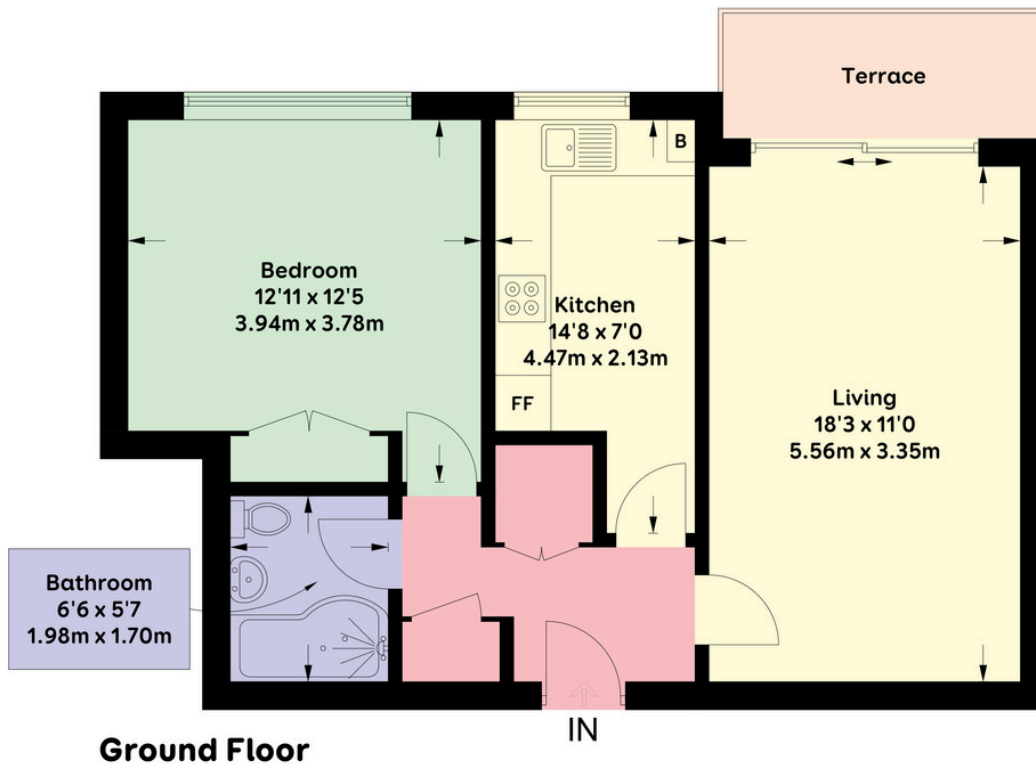
Adjacent to the kitchen, you will find the spacious and inviting living room, which serves as the heart of this lovely apartment. With neutral décor, double glazed windows that flood the room with natural light, and ample space for relaxing or entertaining guests, you will feel right at home in this comfortable and stylish space. One of the standout features of this property is the south-facing terrace. Step outside and soak up the sun while enjoying your morning coffee, enjoying alfresco meals, or simply unwinding whilst watching the world go by.

The bedroom in this delightful apartment offers a tranquil haven, complete with plush carpeting, a built-in wardrobe, and a large window that invites the refreshing sea breeze and natural light. It is the perfect place to unwind at the end of a long day.

Location-wise, Albany Towers is in a prime position close to the shopping facilities of Church Road Hove, where you can find an array of boutiques, cafes, and restaurants. For leisurely strolls and recreational activities, the delightful Hove Lawns are within easy reach, providing a beautiful green space to relax and enjoy the vibrant atmosphere. With the beach just moments away, you can take advantage of the amenities and activities the coastline has to offer, including water sports, beachside dining, and peaceful walks along the promenade.

Measuring approximately 582 sqft / 54.1 sqm, this apartment provides a generous living space for couples, individuals, or those looking for a holiday home by the sea. With its desirable location, renovated interior, and south facing terrace, this property offers a truly unique opportunity for coastal living in Hove.





Ground Floor

APPROXIMATE GROSS INTERNAL AREA (EXCLUDING LIMITED USE AREA) = **579 sqft / 53.8 sqm**
 APPROXIMATE GROSS INTERNAL AREA (INCLUDING LIMITED USE AREA) = **582 sqft / 54.1 sqm**

Floor plan is for illustration and identification purposes only and is not to scale.
 Plots, gardens, balconies and terraces are illustrative only and excluded from all area calculations. All site plans are for illustration purposes only and are not to scale.
 This floor plan has been produced in accordance with Royal Institution of Chartered Surveyors International Property Standards 2 (IPMS2).
 Every attempt has been made to ensure the accuracy however all measurements, fixtures, fittings and data shown is an approximate interpretation for illustrative purposes only.
 © Oakley Property 2024



Agents Notes		Energy Performance Certificate			
Score	Energy rating	Current	Potential		
92+	A				
81-91	B				
69-80	C				
55-68	D			75 C	79 C
39-54	E				
21-38	F				
1-20	G				

Tenure Leasehold
 983 Year Lease Term Remaining
 Service Charge Approx TBC
 Ground Rent N/A
 Council Tax Band B



Please note:
 These details have been produced in good faith and are believed to be accurate based upon the information supplied but they are not intended to form part of a contract. All statements contained in these particulars as to this property are made without responsibility on the part of Oakley, the vendors or lessors and are NOT to be relied on as statements or representations of fact. Any intending purchasers must satisfy themselves by inspection or otherwise as to the correctness of each of the statements contained in these particulars. The vendors, Oakley and any person who work in their employment do not have any authority to make or give any representation or warranty. The floor plan is for illustrative purposes only and the accuracy cannot be relied upon or guaranteed and no responsibility is taken for an error, omission or mis-statement. The total floor area shown has been taken from the EPC.



Oakley

Your Sussex Property Expert

Brighton & Hove Office
 01273 688 881
 3-6 North Road, Brighton BN1 1YA
 www.oakleyproperty.com
 brighton@oakleyproperty.com

We also have offices in:
 Shoreham by Sea
 Lewes Town & Country
 The London Office



A new way of marketing property

Get in touch to book a viewing or valuation of your own property

