



Kemp Street, Brighton, BN1 4EF
Guide Price £500,000 - £525,000

Kemp Street, Brighton, BN1 4EF

Beautifully presented two storey period house in the North Laine conservation area of central Brighton.

Welcome to colourful Kemp Street, a charming two-bedroom home nestled in the heart of Brighton's desirable North Laine conservation area. This beautiful period house boasts a superb location, with an eclectic mix of shops, cafes, and restaurants on the proverbial doorstep.

As you step inside, you are greeted by a useful entrance hall that leads into the open-plan lounge/dining room. This 20' area exudes warmth and character, featuring a fireplace, window with plantation shutters facing the front, and French doors opening up to the west-facing patio garden at the rear. The perfect space for entertaining or simply unwinding after a long day.

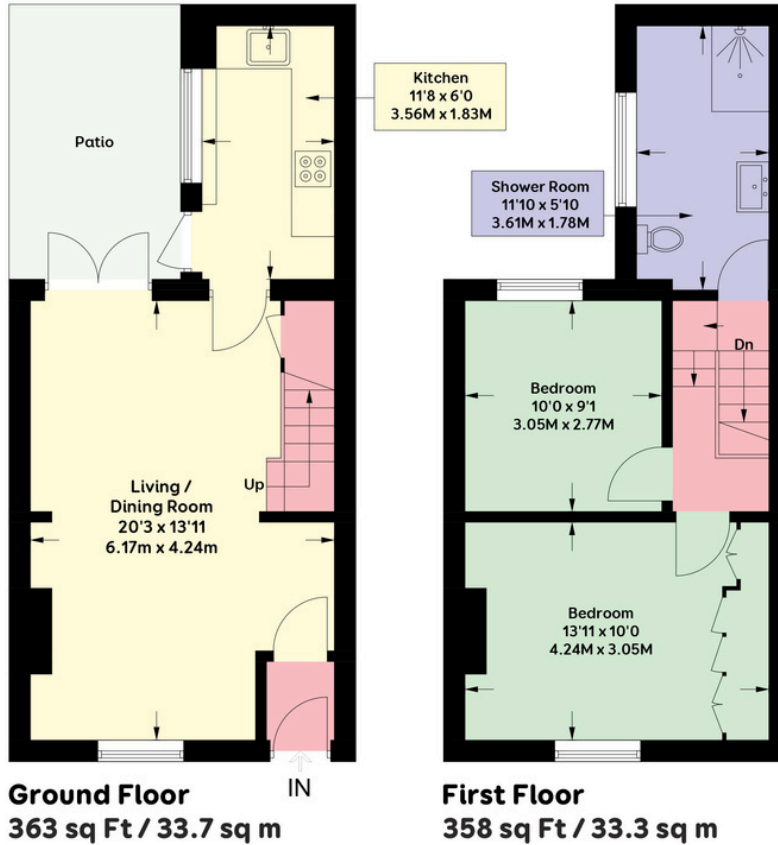
The house also offers a beautifully designed blue fronted fitted kitchen, complete with a granite work surface, Belfast porcelain sink, and plenty of cupboard space. The kitchen's south facing windows overlook the delightful patio garden, filling the room with an abundance of natural light.

Heading up to the half landing, you'll find a luxurious shower room. This well-appointed space comprises, large shower enclosure, wash basin on a vanity unit, WC, and fully tiled walls and floor, creating a contemporary and stylish ambiance.

Upstairs, the first floor landing provides access to loft storage and to two comfortable double bedrooms. The principle bedroom impresses with a range of built-in wardrobes, offering ample storage for your clothes and belongings. The second bedroom is equally inviting, providing a peaceful sanctuary for guests, loved ones or office space.

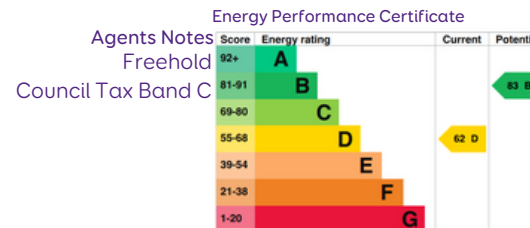
This property is offered for sale with no onward chain, providing you with a hassle-free purchase. In addition to its numerous charms, Kemp Street is conveniently located within walking distance of Brighton railway station, the seafront, and the bustling Churchill Square shopping centre and high street shopping. With excellent transport links and amenities close at hand, you'll enjoy the best that Brighton has to offer.





APPROXIMATE GROSS INTERNAL AREA = 721 sqft / 67.0 sqm

Floor plan is for illustration and identification purposes only and is not to scale.
Plots, gardens, balconies and terraces are illustrative only and excluded from all area calculations. All site plans are for illustration purposes only and are not to scale.
This floor plan has been produced in accordance with Royal Institution of Chartered Surveyors' International Property Standards 2 (IPMS2).
Every attempt has been made to ensure the accuracy however all measurements, fixtures, fittings and data shown is an approximate interpretation for illustrative purposes only.
Copyright Oakley Property 2024



Oakley

Your Sussex Property Expert

Brighton & Hove Office
01273 688 881
3-6 North Road, Brighton BN1 1YA
www.oakleyproperty.com
brighton@oakleyproperty.com

We also have offices in:
Shoreham by Sea
Lewes Town & Country
The London Office



A new way of marketing property

Get in touch to book a viewing or valuation of your own property



Please note:
These details have been produced in good faith and are believed to be accurate based upon the information supplied but they are not intended to form part of a contract. All statements contained in these particulars as to this property are made without responsibility on the part of Oakley, the vendors or lessors and are NOT to be relied on as statements or representations of fact. Any intending purchasers must satisfy themselves by inspection or otherwise as to the correctness of each of the statements contained in these particulars. The vendors, Oakley and any person who work in their employment do not have any authority to make or give any representation or warranty. The floor plan is for illustrative purposes only and the accuracy cannot be relied upon or guaranteed and no responsibility is taken for an error, omission or mis-statement. The total floor area shown has been taken from the EPC.