



Guildford Road, Brighton, BN1 3LU
Asking Price £525,000

Guildford Road, Brighton, BN1 3LU

Three storey townhouse boasting a south-facing patio garden, garage, a glimpse of the sea and is within a stone's throw of Brighton station.

Discover the allure of Brighton living with this charming two bedroom town house nestled in the sought-after West Hill Conservation Area. Located just a stone's throw away from Brighton mainline railway station, this exceptional property offers a superb place to live.

Spread across three storeys, this delightful townhouse greets you with a welcoming front door that opens into a hallway, leading to the internal door of an integral garage featuring a convenient roller door. Within the garage there is a cloakroom offering a fantastic opportunity for customisation and updating. There is also a door providing access to a secluded south-facing patio garden—a true oasis in the heart of the city.

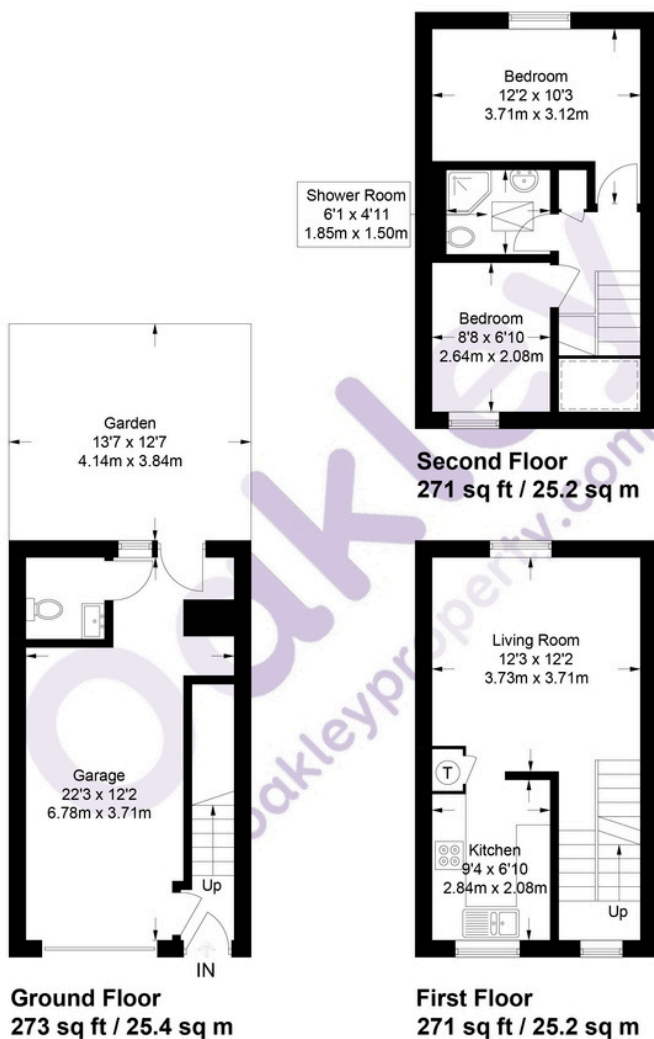
Ascending to the first floor, you'll find a bright and inviting lounge area with exposed wood flooring and a south-facing window, flooding the space with natural light. The adjacent semi open plan kitchen area has white fronted cabinets and complementing wood flooring.

On the top floor, you will find the bedrooms. The rear bedroom offers rooftop views along with a tantalizing glimpse of the sea, providing an enchanting backdrop to your everyday life. The second bedroom is equally comfortable and comes with a spacious cupboard to meet all your storage needs.

The townhouse further features a contemporary-styled shower room, complete with a concealed cistern WC, a practical shower enclosure with glass screens, and a wash basin set upon a vanity unit with an illuminated bathroom cabinet.

Boasting an excellent location in the desirable West Hill Conservation Area, this property offers the best of both worlds, a superb residential atmosphere combined with convenient urban connectivity. You'll find yourself within walking distance of high street shopping, the vibrant seafront, exciting entertainment venues, and the eclectic delights of The North Laine area.

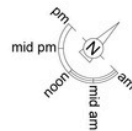




Approximate Gross Internal Area = 800 sq ft / 74.3 sq m
(Excluding Limited Use Area)

Approximate Gross Internal Area = 815 sq ft / 75.7 sq m
(Including Limited Use Area)

Illustration for identification purposes only,
measurements are approximate, not to scale. © Oakley Property 2023



Agents Notes
Tenure Freehold
Council Tax Band B

Energy Performance Certificate

Score	Energy rating	Current	Potential
92+	A		
81-91	B		
69-80	C		
55-68	D	57 D	80 C
39-54	E		
21-38	F		
1-20	G		



Oakley

Your Sussex Property Expert

Brighton & Hove Office
01273 688 881
3-6 North Road, Brighton BN1 1YA
www.oakleyproperty.com
sales@oakleyproperty.com

We also have offices in:
Shoreham by Sea
Lewes Town & Country



A new way of marketing property

Get in touch to book a viewing or valuation of
your own property



Please note:

These details have been produced in good faith and are believed to be accurate based upon the information supplied but they are not intended to form part of a contract. All statements contained in these particulars as to this property are made without responsibility on the part of Oakley, the vendors or lessors and are NOT to be relied on as statements or representations of fact. Any intending purchasers must satisfy themselves by inspection or otherwise as to the correctness of each of the statements contained in these particulars. The vendors, Oakley and any person who work in their employment do not have any authority to make or give any representation or warranty. The floor plan is for illustrative purposes only and the accuracy cannot be relied upon or guaranteed and no responsibility is taken for an error, omission or mis-statement. The total floor area shown has been taken from the EPC.