



**Palmeira Square, Hove, BN3 2JB**  
Offers In Excess Of £625,000



# Palmeira Square, Hove, BN3 2JB

- Beautifully Presented Regency Apartment
- Two Bedrooms
- Living Room & Dining Room
- Modern Fitted Kitchen & Bathroom
- Solid Wood Flooring
- Far Reaching westerly Views Over Palmeira Square Gardens
- Approached Via Well Kept Public Ways
- Measurement 933 Sq feet/87 Sq metres

Stunning Regency Apartment with Far Reaching Views in Hove, East Sussex

This beautifully presented Regency apartment offers a truly exquisite living experience. Boasting two bedrooms, one bathroom, and a spacious reception room, this property is the epitome of stylish and luxurious living.

Upon entering the apartment, you are immediately captivated by its charm, as a sense of grandeur permeates every corner. The carefully selected solid wood flooring adds a touch of sophistication to the space, while the high ceilings create an airy and inviting atmosphere.

The living room and dining room are thoughtfully designed to offer a seamless transition between relaxation and entertainment, making it an ideal space to unwind or host guests. Warm sunlight streams through the west facing windows, accentuating the elegance of the room and offering breath taking views of Palmeira Square Gardens.

The modern fitted kitchen is a chef's dream, featuring state-of-the-art appliances and ample storage space. This well-appointed kitchen allows for culinary exploration and serves as a hub for creating memorable meals and experiences.







## Palmeira Square, Hove, BN3 2JB

Immerse yourself in elegance with this beautifully presented Two bedroom apartment offering splendid views over Palmeira Square Gardens in Hove, East Sussex

The two bedrooms provide a tranquil retreat, with plenty of natural light and generous storage space. Whether it's a restful night's sleep or a quiet space for reflection, these bedrooms are designed to meet your every need.

The bathroom exudes luxury, with its contemporary design and high-quality fixtures. Offering a relaxing haven to unwind after a long day, it is the perfect place to indulge in a soothing bath or rejuvenating shower.

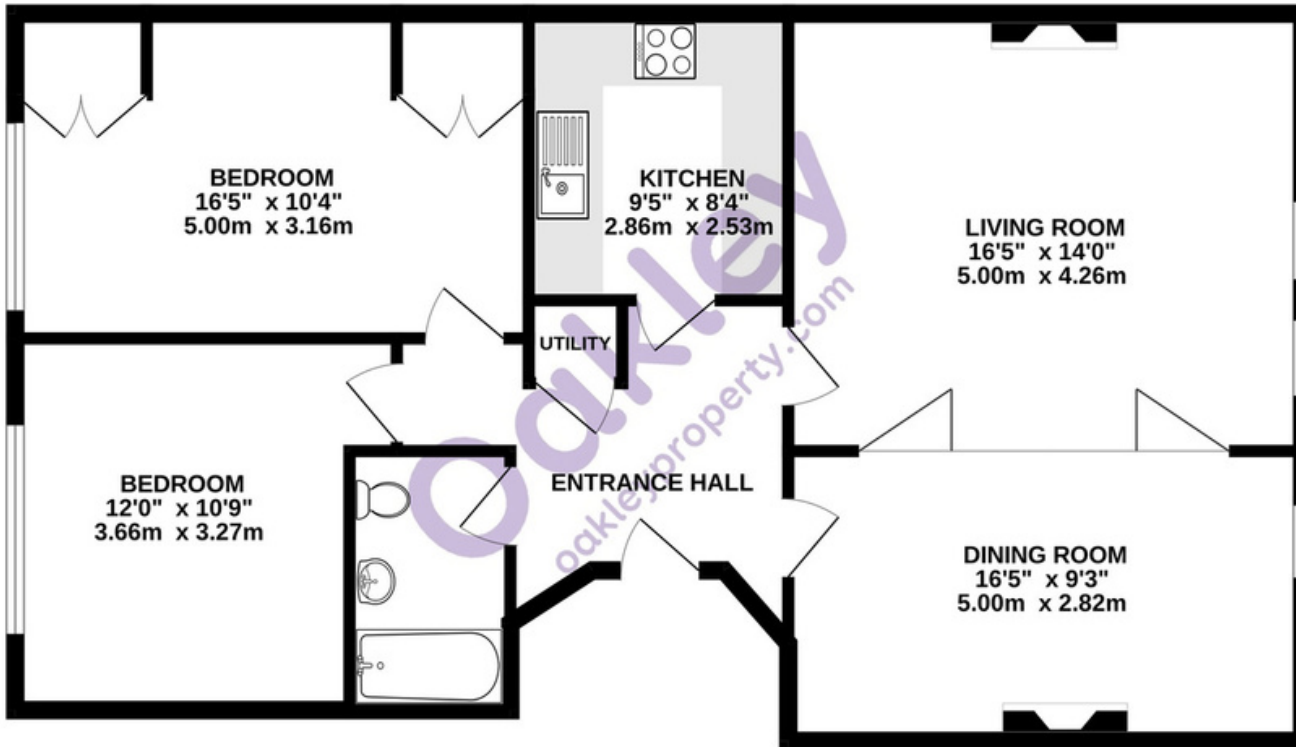
The apartment is accessed via well-kept public ways, adding to the appeal of this exceptional property. As you approach the entrance, a sense of exclusivity envelops you, enhancing the feeling of coming home to a sanctuary of unparalleled elegance.

Measuring 933 square feet (87 square meters), this majestic apartment provides just the right amount of space to live comfortably and stylishly. Its intelligent layout ensures that no corner is wasted, maximizing both functionality and aesthetics.

Situated in the highly sought-after location of Palmeira Square, the apartment offers more than just a luxurious home. The westerly views over Palmeira Square Gardens create an idyllic backdrop, with nature's beauty adding to the overall charm and serenity of the property.

Close proximity to local amenities, including restaurants, cafes, shops, and transport links, ensures that convenience is never compromised. Whether it's a leisurely stroll along the beach or exploring the vibrant culture of that Brighton & Hove has to offer, this apartment offers easy access to all that the area has to offer.

# THIRD FLOOR

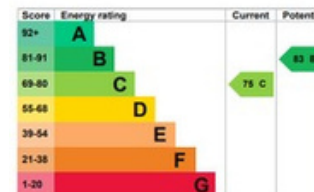


TOTAL FLOOR AREA : 969sq.ft. (90.0 sq.m.) approx.  
Made with Metropix ©2023

### Agents Notes

Tenure - Share of Freehold  
A new 999 year lease will be granted upon completion  
Ground Rent- N/A  
Service Charge- Approx. £3,200 per annum  
Council Tax Band A

### Energy Performance Certificate



# Oakley

Your Sussex Property Expert

Brighton & Hove Office  
01273 688 881  
3-6 North Road, Brighton BN1 1YA  
www.oakleyproperty.com  
brighton@oakleyproperty.com

We also have offices in:  
Shoreham by Sea  
Lewes Town & Country  
The London Office



A new way of marketing property

Get in touch to book a viewing or valuation of your own property



**Please note:**

These details have been produced in good faith and are believed to be accurate based upon the information supplied but they are not intended to form part of a contract. All statements contained in these particulars as to this property are made without responsibility on the part of Oakley, the vendors or lessors and are NOT to be relied on as statements or representations of fact. Any intending purchasers must satisfy themselves by inspection or otherwise as to the correctness of each of the statements contained in these particulars. The vendors, Oakley and any person who work in their employment do not have any authority to make or give any representation or warranty. The floor plan is for illustrative purposes only and the accuracy cannot be relied upon or guaranteed and no responsibility is taken for an error, omission or mis-statement. The total floor area shown has been taken from the EPC.