



Oakland Court, Buckingham Road, Shoreham, BN43 5TZ

Asking Price £120,000

Oakland Court, Buckingham Road, Shoreham, BN43 5TZ

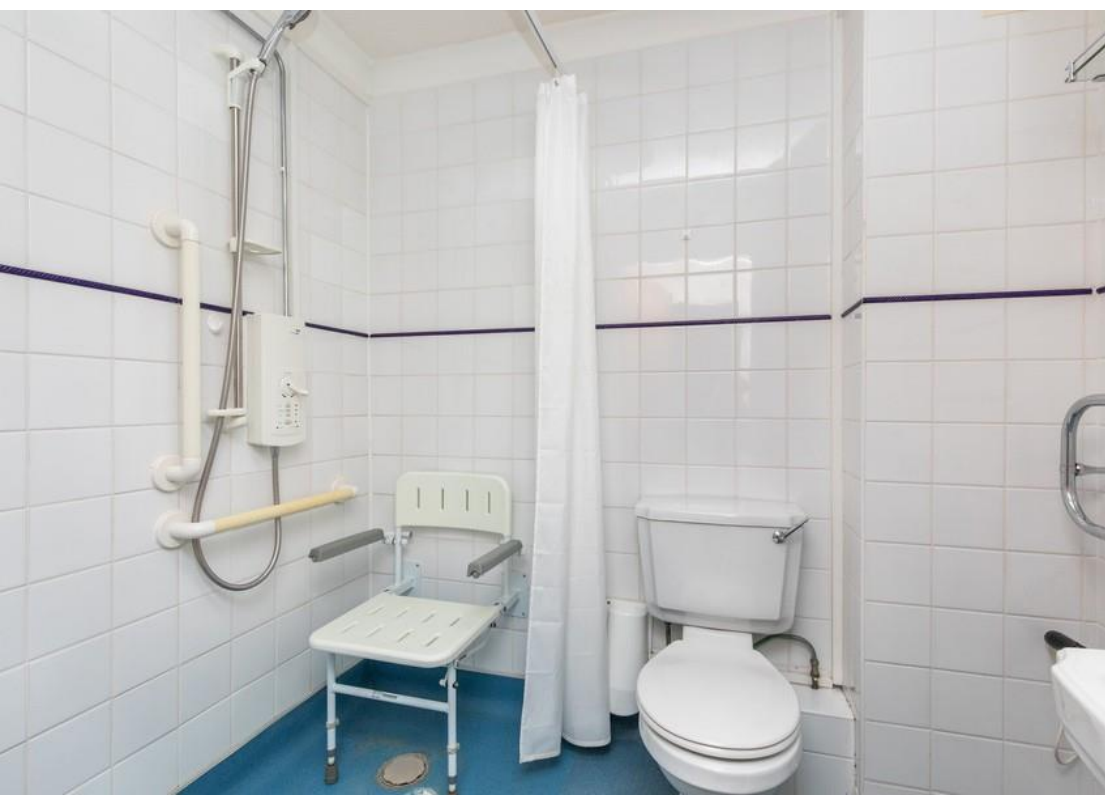
The Property

Introducing a charming 1-bedroom apartment located in the popular retirement development of Oakland Court in the heart of Shoreham-By-Sea. This first-floor flat provides the perfect haven for those seeking a peaceful and convenient retirement retreat. Newly fitted carpets in 2024, give the apartment a fresh and inviting feel along with a recently refitted electric fuse board and meters.

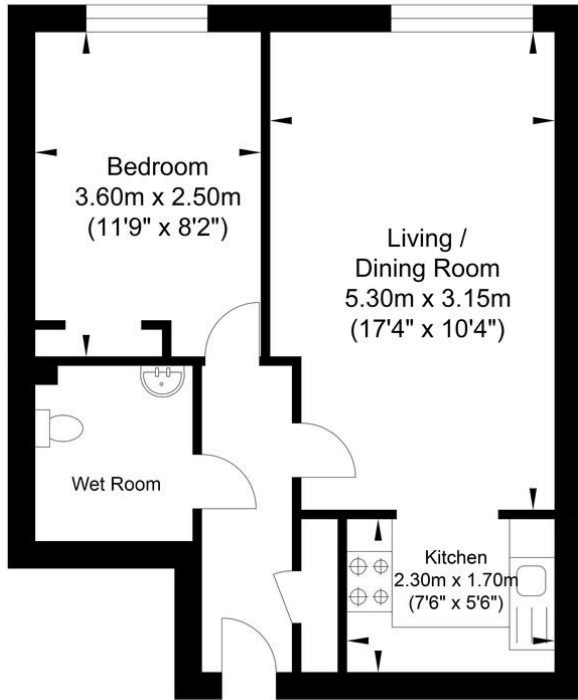
The open-plan living area seamlessly connects the lounge, dining, and kitchen areas, providing an ideal layout for relaxation. The modern kitchen offers ample storage space and essential appliances to facilitate your needs. The bedroom is generously sized, providing a comfortable space with a fitted wardrobe and pull-down emergency cord. The bathroom has been converted into a walk-in shower.

Oakland Court offers a range of communal amenities designed to enhance your retirement experience. The communal lounge provides an inviting space to socialise with fellow residents, or simply relax with a good book! The communal laundry facilities ensure convenience via a booking system. Step outside to the communal gardens, which are nicely maintained and provide the perfect for a leisurely. With no chain involved, this fantastic apartment is ready for you to move in.

Additionally, the convenient proximity to the lift makes accessing the apartment effortless and convenient. Shoreham-By-Sea offers a wealth of amenities, including shops, cafes, restaurants, and local transport links, all within easy reach from Oakland Court. Enjoy leisurely walks along the picturesque beachfront or explore the vibrant community with its regular events and activities. With excellent transport connections, you can easily venture further afield to discover the surrounding areas. Don't miss out on this wonderful opportunity to embrace the retirement lifestyle. Contact us today to arrange a viewing and make this charming 1 bed apartment in Oakland Court, Shoreham-By-Sea your new home.



Oakland Court, Shoreham



Approximate Floor Area
410.64 sq ft
(38.15 sq m)

Approximate Gross Internal Area = 38.15 sq m / 410.64 sq ft
Illustration for identification purposes only, measurements are approximate, not to scale.



Oakley

Your Sussex Property Expert

Shoreham Property Hub
01273 661 577
6 Brunswick Road, Shoreham BN43 5WB
www.oakleyproperty.com
shoreham@oakleyproperty.com

We also have offices in:
Lewes
Brighton & Hove

Get in touch to book a viewing or valuation of
your own property



Energy Performance Certificate

Agents Notes	Score	Energy rating	Current	Potential
Tenure - Leasehold	92+	A		
Maintenance - £2800 PA	81-91	B		
125 Years from 1986	69-80	C		
	55-68	D	63 D	80 C
	39-54	E		
	21-38	F		
	1-20	G		



Please note:

These details have been produced in good faith and are believed to be accurate based upon the information supplied but they are not intended to form part of a contract. All statements contained in these particulars as to this property are made without responsibility on the part of Oakley, the vendors or lessors and are NOT to be relied on as statements or representations of fact. Any intending purchasers must satisfy themselves by inspection or otherwise as to the correctness of each of the statements contained in these particulars. The vendors, Oakley and any person who work in their employment do not have any authority to make or give any representation or warranty. The floor plan is for illustrative purposes only and the accuracy cannot be relied upon or guaranteed and no responsibility is taken for an error, omission or mis-statement. The total floor area shown has been taken from the EPC.