

Havelock Road, Brighton, BN1 6GL
Offers In Excess Of £425,000

Havelock Road, Brighton, BN1 6GL

A two bedroom maisonette with private street entrance and share of freehold, located in a sought after position close to both Preston and Blakers Park

The Property

A well presented first & second floor maisonette in a sought after location close to Preston Park. The accommodation is approached via a private street entrance and comprises on the first floor; An entrance hall with study space, open plan living space, a double bedroom and a bathroom. On the second floor is a double bedroom with fitted storage and an en-suite shower room.

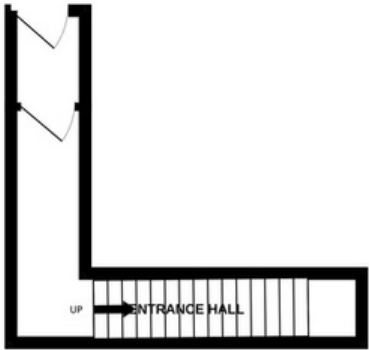
The Location

Havelock Road is conveniently located in the popular 'Golden Triangle' area of Brighton & Hove, handy for access to three railway stations; Brighton mainline station, London Road station and Preston Park station. Within walking distance of the city centre with its array of boutiques, cafés, bars, bistros, shops, schools, parks and sports facilities, giving you plenty to explore.

Minutes away is one of Brighton's oldest and largest parks, spanning an impressive 63 acres. The park offers the perfect respite to city living. Whether you want to enjoy a picnic on a summer's day or want to be active and take part in sport, jog round the park or exercise in the velodrome, this wonderful urban park has it all.



GROUND FLOOR



FIRST FLOOR



SECOND FLOOR



TOTAL FLOOR AREA : 872sq.ft. (81.0 sq.m.) approx.
Made with Metropix ©2024



Oakley

Your Sussex Property Expert

Brighton & Hove Office
01273 688 881
3-6 North Road, Brighton BN1 1YA
www.oakleyproperty.com
brighton@oakleyproperty.com

We also have offices in:
Shoreham by Sea
Lewes Town & Country
The London Office



A new way of marketing property

Get in touch to book a viewing or valuation of your own property

Energy Performance Certificate

Score	Energy rating	Current	Potential
92+	A		
81-91	B		
69-80	C		
55-68	D	47 D	71 C
39-54	E		
21-38	F		
1-20	G		

Agents Notes
Tenure Share of Freehold
999 Year Lease Term From 1997
Ground Rent- N/A
Service Charge adhoc
Council Tax Band B



Please note:
These details have been produced in good faith and are believed to be accurate based upon the information supplied but they are not intended to form part of a contract. All statements contained in these particulars as to this property are made without responsibility on the part of Oakley, the vendors or lessors and are NOT to be relied on as statements or representations of fact. Any intending purchasers must satisfy themselves by inspection or otherwise as to the correctness of each of the statements contained in these particulars. The vendors, Oakley and any person who work in their employment do not have any authority to make or give any representation or warranty. The floor plan is for illustrative purposes only and the accuracy cannot be relied upon or guaranteed and no responsibility is taken for an error, omission or mis-statement. The total floor area shown has been taken from the EPC.

