



**North Place, Brighton, BN1 1YF**  
Offers in Excess of £550,000



# North Place, Brighton, BN1 1YF

Four story three bedroom beautifully presented period property in the desirable North Laine conservation area in the heart of the city.

## The Property

---

This very well presented Victorian bay fronted terraced house has four floors of charming accommodation, briefly comprising; The lower floor has a cloakroom and the superb kitchen dining room with French doors opening out on to the secluded patio garden. The ground floor has the cosy lounge with wood burning stove and exposed floorboards. The first floor has the generously sized main bedroom with feature fireplace with built in wardrobes, perfectly placed next to the bedroom is another cloakroom. Upon the top floor there are two bedrooms, the bathroom and the landing with storage cupboard and access to the loft space.

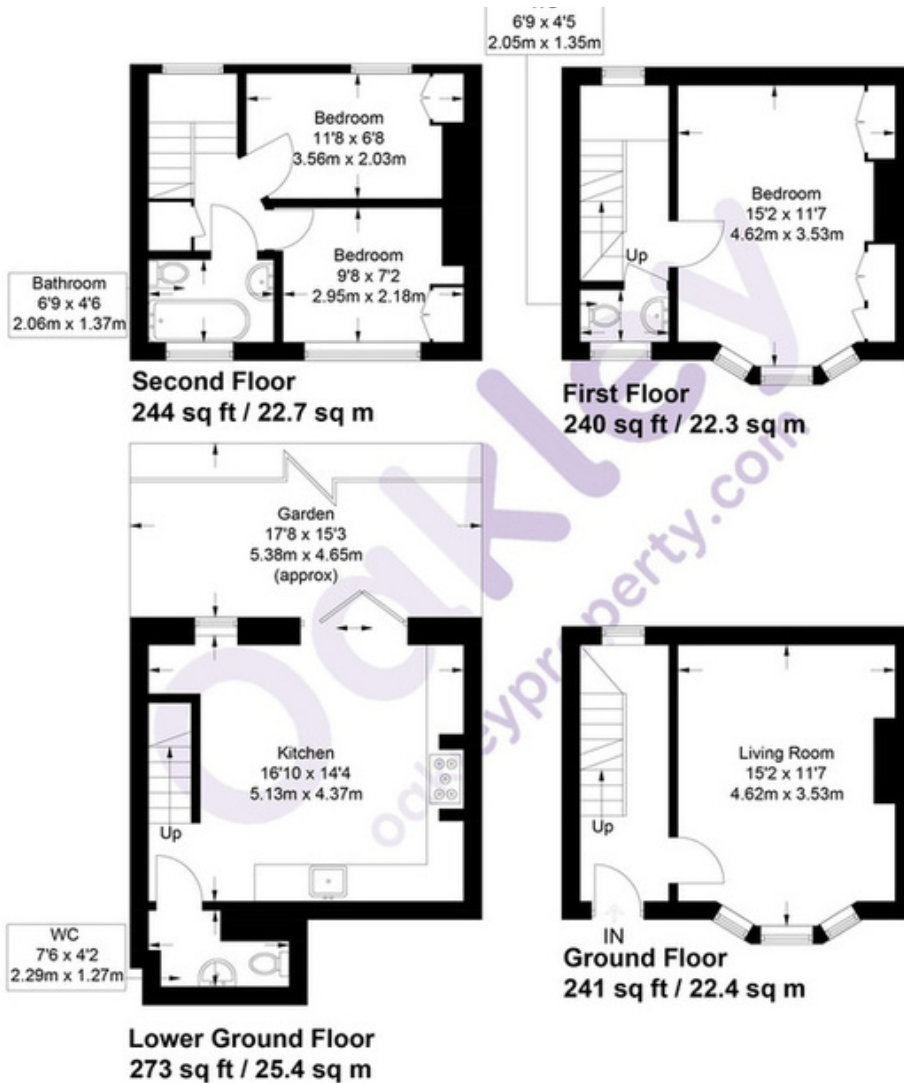
## The Location

---

North Place is a quiet cul-de-sac within the desirable North Laine conservation area in the centre of the city. This amazing location has the delights of The North Laine on the proverbial doorstep, including plenty of independent boutiques, cafes and bars. Prince Regent Swimming Complex (100 yards), Brighton railway station (0.4 miles), Brighton Dome (0.1 miles), Morrisons Supermarket (0.4 miles), Sainsburys Supermarket (0.4 miles), Waitrose Supermarket (0.7 miles), The Seafront (0.5 miles), The Theatre Royal (0.2 miles), The Churchill Square Sopping Centre (0.5 miles), Komedia Club & Cinema (0.1 miles), Brighton Library (500 feet).







Approximate Gross Internal Area = 998 sq ft / 92.8 sq m



Energy Performance Certificate



**Oakley**

Your Sussex Property Expert

Brighton & Hove Office  
01273 688 881  
3-6 North Road, Brighton BN1 1YA  
www.oakleyproperty.com  
brighton@oakleyproperty.com

We also have offices in:  
Shoreham by Sea  
Lewes Town & Country  
The London Office



A new way of marketing property

Get in touch to book a viewing or valuation of your own property



These details have been produced in good faith and are believed to be accurate based upon the information supplied but they are not intended to form part of a contract. All statements contained in these particulars as to this property are made without responsibility on the part of Oakley, the vendors or lessors and are NOT to be relied on as statements or representations of fact. Any intending purchasers must satisfy themselves by inspection or otherwise as to the correctness of each of the statements contained in these particulars. The vendors, Oakley and any person who work in their employment do not have any authority to make or give any representation or warranty. The floor plan is for illustrative purposes only and the accuracy cannot be relied upon or guaranteed and no responsibility is taken for an error, omission or mis-statement. The total floor area shown has been taken from the EPC.

