



**Princes Street, Brighton, BN2 1RD**  
Asking Price £475,000

# Princes Street, Brighton, BN2 1RD

A well presented, end of terrace, three storey period house located in central Brighton, with two bedrooms and patio garden.

Are you looking for a delightful property in the heart of Brighton? Look no further than this well-presented house on Princes Street. With its central location, desirable features, and no chain, this house offers a brilliant opportunity for those in search of a wonderful home or an investment.

The entire house has been carefully maintained and presented throughout, creating a living space that feels both comfortable and stylish.

This end of terrace house boasts two bedrooms, providing ample room for relaxation and rest. They offer a tranquil space to unwind after a long day. Whether you're a couple, a small family, or a professional looking for additional space, these bedrooms are ideal.

The kitchen in this property is well-appointed and perfect for those who enjoy cooking and entertaining. With ample storage space and modern appliances, including an oven, hob, and extractor fan, preparing delicious meals will be an enjoyable experience.

The bathroom and cloakroom have been tastefully designed, featuring contemporary fixtures and fittings. Whether you prefer a relaxing bath or a quick shower, the bathroom offers both options, ensuring your daily routines are effortlessly accommodated.

The living room is a great space to relax with family and friends. Its generous size allows for various seating arrangements, perfect for hosting gatherings or simply cosying up on the sofa for a movie night.

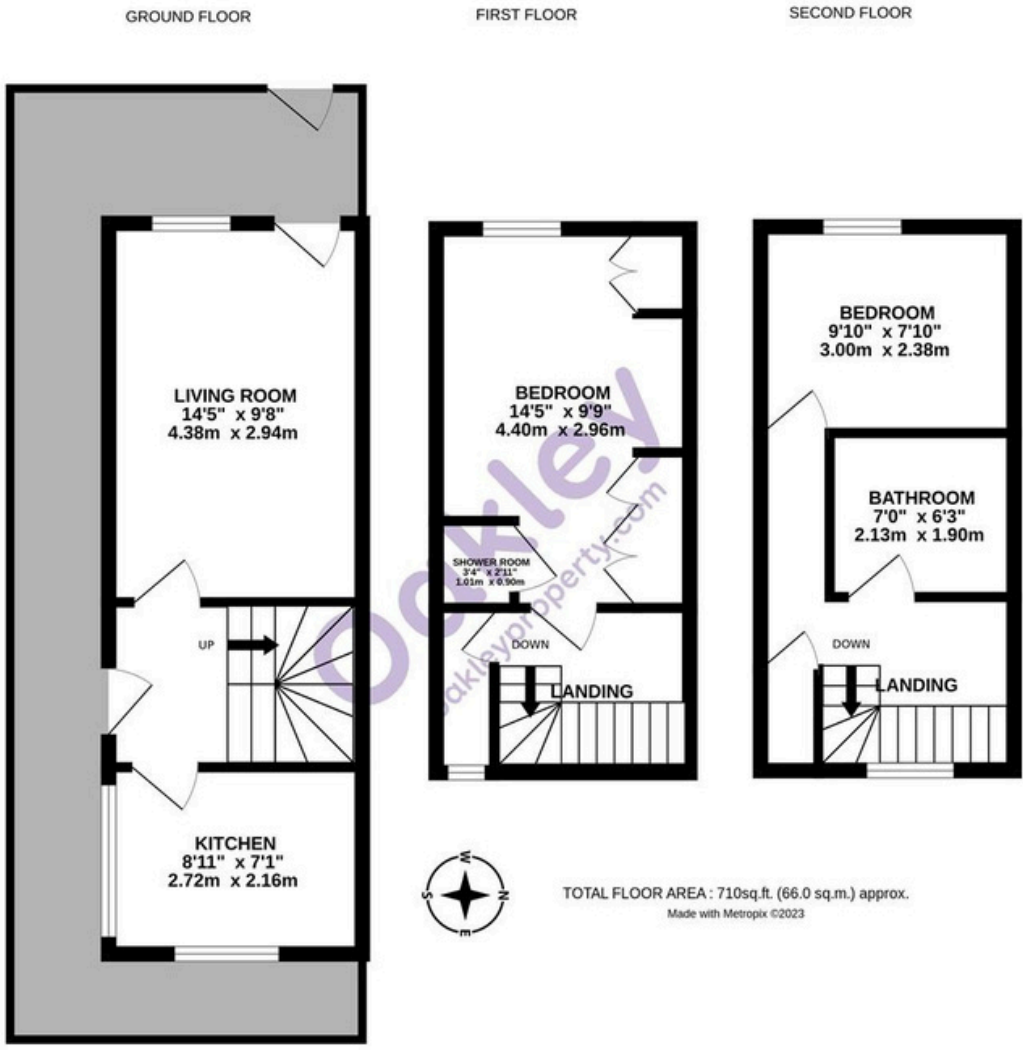
The private outdoor space is perfect for those who enjoy al fresco dining or simply unwind in the fresh air.

The lack of chain with this property offers an added advantage. Without any complications, you can move forward with your plans quickly and seamlessly. This makes the house an ideal opportunity for first-time buyers, investors, or anyone seeking a smooth purchasing process.

Situated in the vibrant city of Brighton, this house benefits from a central location, granting easy access to the city's amenities, including shops, restaurants, bars, and entertainment options. The transport links are excellent, making commuting a breeze whether you work locally or in the surrounding areas.

In terms of size, this house offers an impressive internal floor area of 66m<sup>2</sup>/710ft<sup>2</sup>. With its well-proportioned rooms and ample storage, you'll have plenty of space to make it your own.





TOTAL FLOOR AREA : 710sq.ft. (66.0 sq.m.) approx.  
Made with Metropix ©2023



# Oakley

Your Sussex Property Expert

Brighton & Hove Office  
01273 688 881  
3-6 North Road, Brighton BN1 1YA  
www.oakleyproperty.com  
sales@oakleyproperty.com

We also have offices in:  
Shoreham by Sea  
Lewes Town & Country



A new way of marketing property

Get in touch to book a viewing or valuation of your own property



### Energy Performance Certificate

Agents Notes  
Tenure Freehold  
Council Tax Band B

Score	Energy rating	Current	Potential
92+	A		
81-91	B		
69-80	C	74 C	74 C
55-68	D		
39-54	E		
21-38	F		
1-20	G		



Please note:  
These details have been produced in good faith and are believed to be accurate based upon the information supplied but they are not intended to form part of a contract. All statements contained in these particulars as to this property are made without responsibility on the part of Oakley, the vendors or lessors and are NOT to be relied on as statements or representations of fact. Any intending purchasers must satisfy themselves by inspection or otherwise as to the correctness of each of the statements contained in these particulars. The vendors, Oakley and any person who work in their employment do not have any authority to make or give any representation or warranty. The floor plan is for illustrative purposes only and the accuracy cannot be relied upon or guaranteed and no responsibility is taken for an error, omission or mis-statement. The total floor area shown has been taken from the EPC.