



**Woodview, Shoreham by Sea, West Sussex, BN43 6AG**  
Offers Over £450,000

# Woodview, Shoreham by Sea

Welcome to your dream home in Woodview, Shoreham-By-Sea. This lovely and bright end-terraced house is perfect for those looking for a comfortable and stylish living space. With its ideal location, abundance of natural light, and modern features, this property is a true gem.

Upon entering, you are greeted by an inviting hallway that leads you into the heart of the house. The spacious living room is perfect for relaxing or hosting guests, while the adjoining dining area provides a cozy space for enjoying meals. The entire area is flooded with natural light, creating a warm and welcoming atmosphere.

The modern fitted kitchen breakfast room is well fitted and modern, featuring elegant cabinetry, ample storage, and a seating area where you can savour your morning coffee or enjoy casual meals and has double doors that lead out in to the garden.

Upstairs, you will find three well-sized bedrooms, all featuring fitted storage to maximize space and keep your belongings organized. The master bedroom boasts a tranquil atmosphere, allowing you to relax and unwind after a long day. The remaining bedrooms are versatile and can be used as guest rooms, home offices, or children's rooms.

The modern fitted bathroom is sleek and stylish with contemporary fixtures and fitted storage. Additionally, a ground floor W.C. provides convenience for residents and guests alike.

This house is in fantastic condition throughout, reflecting the care and attention its current owners have put into maintaining and enhancing the property. The décor is tasteful and neutral, providing a canvas for you to add your personal touch and make this house truly feel like home.

Step outside to the beautiful south-facing rear patio garden, a haven for relaxation. Whether it's enjoying a BBQ with friends or simply basking in the sunshine, this private area offers the ideal setting to enjoy some fresh air.

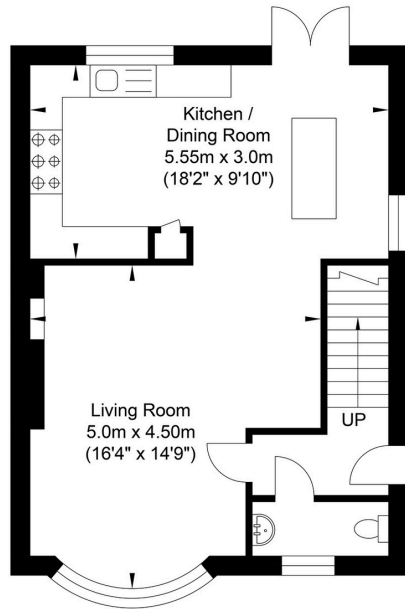
No need to worry about parking, as this property provides private off-street parking facilities along with a garage that can also be accessed from a door in the rear garden. This makes coming home a stress-free experience, with no hunting for a parking spot or worrying about your vehicle's security.

Situated in a quiet cul-de-sac just North of the Upper Shoreham Road, this location offers peace and quiet while still being close to amenities. Shoreham Mainline Railway Station and the town centre are just 0.6 miles away, providing easy access to transportation and shopping.

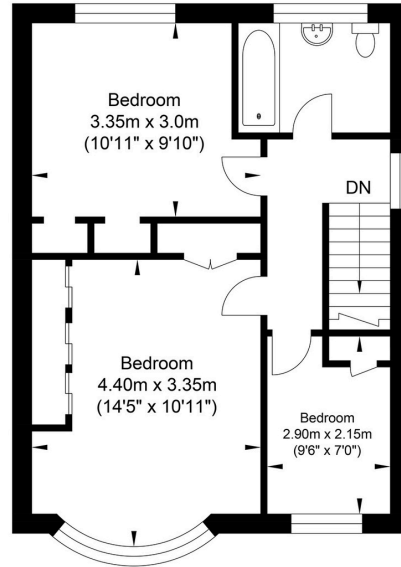
Overall, this house in Woodview, Shoreham is a rare find, combining comfort, style, and practicality. Don't miss the opportunity to make this beautiful property your next home. Call now to arrange a viewing and experience the charm of this delightful house by calling us on 01273 661 577.



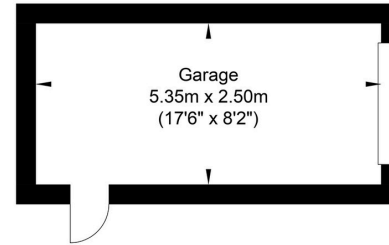
# Woodview, Shoreham-by-Sea



Ground Floor  
Approximate Floor Area  
462.95 sq ft  
(43.01 sq m)



First Floor  
Approximate Floor Area  
462.95 sq ft  
(43.01 sq m)



Garage  
Approximate Floor Area  
144.02 sq ft  
(13.38 sq m)



Approximate Gross Internal Area = 99.40 sq m / 1069.93 sq ft

Illustration for identification purposes only, measurements are approximate, not to scale.

## Material Information

Tenure - Freehold  
Council Tax - C

## Energy Performance Certificate

Score	Energy rating	Current	Potential
92+	A		
81-91	B		86 B
69-80	C		
55-68	D	67 D	
39-54	E		
21-38	F		
1-20	G		



# Oakley

Your Sussex Property Expert

Shoreham Property Hub  
01273 661 577

6 Brunswick Road, Shoreham BN43 5WB  
www.oakleyproperty.com  
shoreham@oakleyproperty.com

We also have offices in:  
Lewes  
Brighton & Hove



Property Video

Get in touch to book a viewing or valuation of  
your own property



Please note:

These details have been produced in good faith and are believed to be accurate based upon the information supplied but they are not intended to form part of a contract. All statements contained in these particulars as to this property are made without responsibility on the part of Oakley, the vendors or lessors and are NOT to be relied on as statements or representations of fact. Any intending purchasers must satisfy themselves by inspection or otherwise as to the correctness of each of the statements contained in these particulars. The vendors, Oakley and any person who work in their employment do not have any authority to make or give any representation or warranty. The floor plan is for illustrative purposes only and the accuracy cannot be relied upon or guaranteed and no responsibility is taken for an error, omission or mis-statement. The total floor area shown has been taken from the EPC.

