



Bishops Drive, Lewes, East Sussex, BN7 1HA
Asking Price £370,000

Bishops Drive, Lewes, East Sussex, BN7 1HA

A two bedroom mid-terrace house constructed in the late 1960's, in a pedestrianised residential area.

The Property

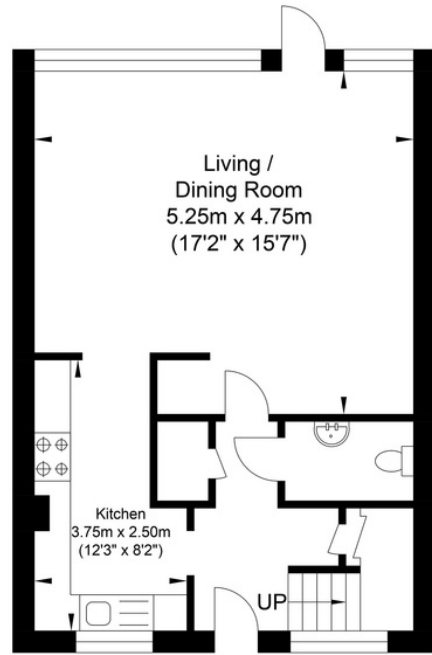
The property has been well maintained and has two double bedrooms with built in wardrobes and windows to the rear offering views towards Firls Beacon. There is a modern bathroom and the landing has two deep cupboards - one with a gas boiler in it. Downstairs is a cloakroom, further cupboard and cloaks cupboard. The kitchen has modern units and a built-in gas hob and oven and space for other appliances. The lounge has full width windows from floor to ceiling and overlooks the south facing, fully enclosed rear garden. There is a garage in a block.

The Location

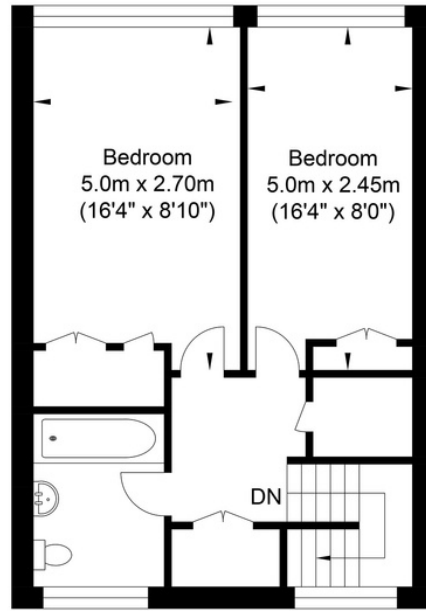
Lewes is the county town of East Sussex, nestled within the South Downs National Park, with a direct fast train service to London. The station offer links to London in just over an hour and Brighton in under 20 minutes. The town offers an excellent range of shops including 2 prime supermarkets, Waitrose and Tesco, along with a variety of independent medieval and Georgian fronted high street shops. The Depot Cinema is a new state of the art three screen community cinema screening a variety of new releases, documentaries, classics & films for all the family. Additionally, Lewes offers a wide range of popular cafes, old inns and restaurants as well as a farmers market held the first weekend of every month. The internationally recognised Glyndebourne Opera House is located approx 4 miles from Lewes. High quality sports facilities including Pool , Track, Tennis as well as County and Regional teams representing Football, Rugby, Cricket and Hockey offering great opportunities for adults and children alike. Highly regarded infant and primary schools are an easy walk as are Priory Secondary School, Sussex Downs College and Lewes Old Grammar School.



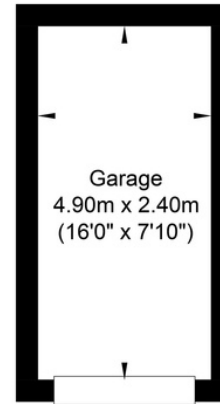
Bishops Drive, Lewes



Ground Floor
Approximate Floor Area
437.98 sq ft
(40.69 sq m)



First Floor
Approximate Floor Area
437.98 sq ft
(40.69 sq m)



Garage
Approximate Floor Area
126.58 sq ft
(11.76 sq m)



Approximate Gross Internal Area = 93.14 sq m / 1002.55 sq ft
Illustration for identification purposes only, measurements are approximate, not to scale.

Tenure: Freehold
Council tax Band: C

Energy Performance Certificate

Score	Energy rating	Current	Potential
92+	A		
81-91	B		
69-80	C	72 C	87 B
55-68	D		
39-54	E		
21-38	F		
1-20	G		



Oakley

Your Sussex Property Expert

Lewes Property Hub
01273 487 444
14a High Street, Lewes BN7 2LN
www.oakleyproperty.com
lewes@oakleyproperty.com

We also have offices in:
Shoreham by Sea
Brighton & Hove
The London Office



A new way of marketing property

Get in touch to book a viewing or valuation of your own property



Please note:

These details have been produced in good faith and are believed to be accurate based upon the information supplied but they are not intended to form part of a contract. All statements contained in these particulars as to this property are made without responsibility on the part of Oakley, the vendors or lessors and are NOT to be relied on as statements or representations of fact. Any intending purchasers must satisfy themselves by inspection or otherwise as to the correctness of each of the statements contained in these particulars. The vendors, Oakley and any person who work in their employment do not have any authority to make or give any representation or warranty. The floor plan is for illustrative purposes only and the accuracy cannot be relied upon or guaranteed and no responsibility is taken for an error, omission or mis-statement. The total floor area shown has been taken from the EPC.