



PUTTERILLS

est. 1992

Guide Price £600,000

53 Garden Fields, Offley, Hitchin, Hertfordshire, SG5

3DF

PROPERTY SUMMARY

Situated in the heart of the highly sought-after Hertfordshire village of Offley, this beautifully presented four-bedroom family home offers spacious, modern accommodation and an exceptional village lifestyle. Thoughtfully maintained throughout, the property is ready to move straight into.

The well-balanced accommodation includes a bright bay-fronted living room, a contemporary kitchen/diner with French doors opening onto the private rear garden, four generously sized bedrooms, including a principal bedroom with en-suite, a stylish family bathroom and a convenient downstairs cloakroom. Outside, the landscaped rear garden provides the perfect space for relaxing and entertaining, while a garage and gated carport offer excellent parking and storage.

Surrounded by beautiful countryside, Offley is renowned for its welcoming community, highly regarded primary school, village amenities and scenic walks, while nearby Hitchin provides an excellent range of shops, restaurants and a mainline station with fast links to London. Combining modern family living with the charm of a thriving village, this is a wonderful place to call home.



















LOCAL AUTHORITY
North Herts

TENURE
Freehold

COUNCIL TAX BAND E

VIEWINGS
By prior appointment only

Garden Fields, SG5

Approximate Area = 124.86 sq m / 1344 sq ft
(Including Garage)
Garage = 20.35 sq m / 219 sq ft

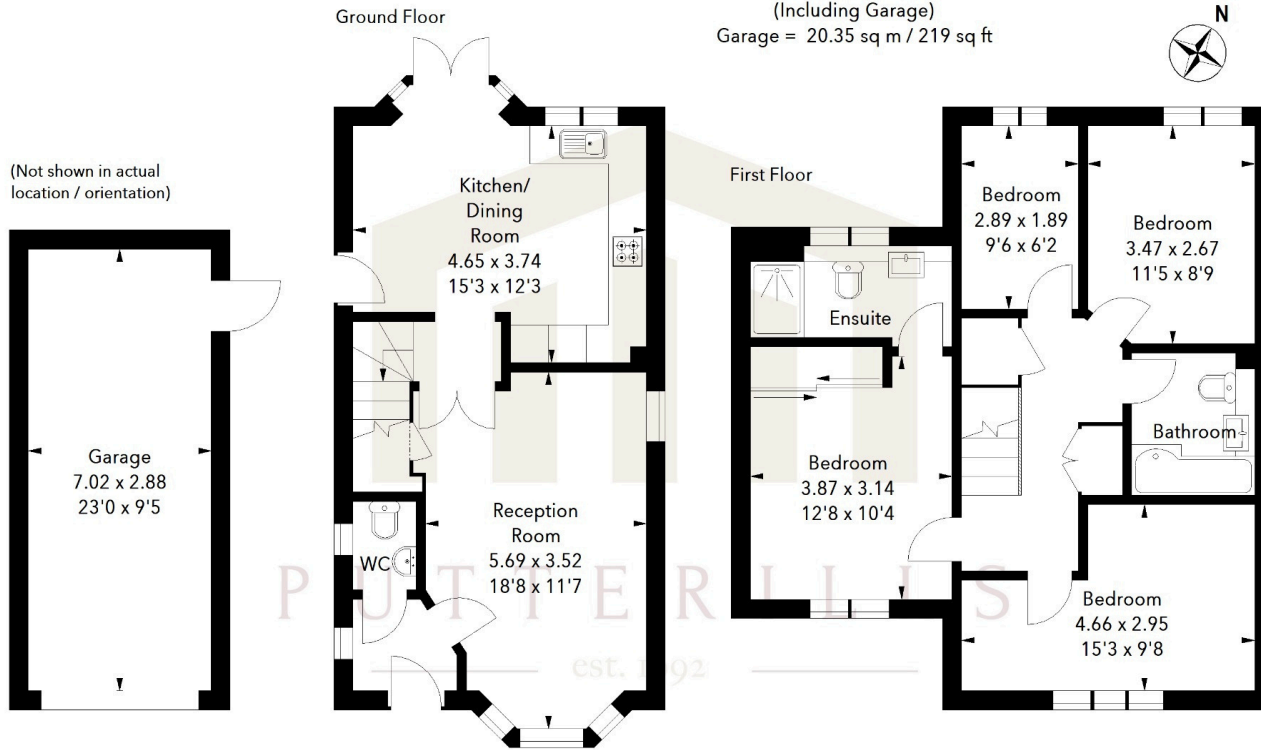


Illustration For Identification Purposes Only.
All measurements and areas are approximate, not to scale.
© Orange Tree Photography

Score	Energy rating	Current	Potential
92+	A		
81-91	B		82 B
69-80	C	78 C	
55-68	D		
39-54	E		
21-38	F		
1-20	G		

Agents Note: Whilst every care has been taken to prepare these particulars, they are for guidance purposes only. All measurements are approximate and are for general guidance purposes only and whilst every care has been taken to ensure their accuracy, they should not be relied upon and potential buyers/tenants are advised to recheck the measurements



OFFICE ADDRESS
Putterills Hitchin
60 Hermitage Road
Hitchin
SG5 1DB

CONTACT DETAILS

01462 632222
hitchin@putterills.co.uk
www.putterills.co.uk