



PUTTERILLS
— est. 1992 —

Westell Close, Baldock, SG7 6RY
Guide Price: £475,000

PROPERTY SUMMARY

Set within a peaceful residential setting on the edge of Baldock, this thoughtfully improved family home combines flexible living space with excellent access to both the town centre and surrounding countryside. The extended kitchen and dining area forms the heart of the home, offering a bright and sociable space overlooking the garden, while a separate reception room provides additional versatility for everyday family life. Upstairs, well-proportioned bedrooms are complemented by fitted storage to the principal bedroom and a well-maintained family bathroom. Outside, the private garden and versatile garden room offer further flexibility for home working, hobbies or entertaining. Positioned within easy reach of Baldock station, local amenities and popular countryside walks, Westell Close offers a well-balanced lifestyle with strong commuter links and a welcoming community feel.

3



1



1















LOCAL AUTHORITY
North Herts

TENURE
Freehold

COUNCIL TAX BAND
D

VIEWINGS

By prior appointment only

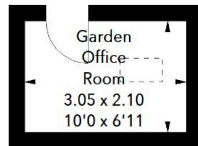
EPC

TBC

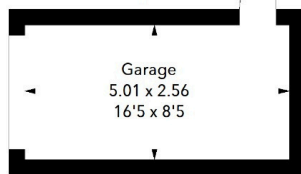
Westell Close,
Baldock, SG7

Approximate Area = 105.72 sq m / 1138 sq ft
(Including Garage & Garden Office Room)
Garage Area = 12.73 sq m / 137 sq ft
Garden Office Room = 6.41 sq m / 69 sq ft

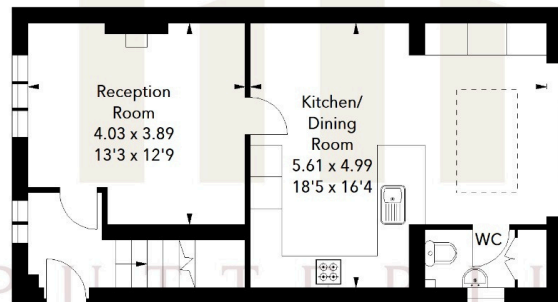
(Not shown in actual
location / orientation)



(Not shown in actual
location / orientation)



Ground Floor



First Floor

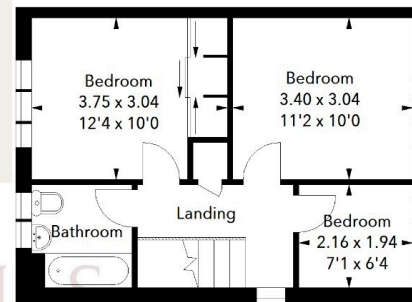


Illustration For Identification Purposes Only.

All measurements and areas are approximate, not to scale.

© Orange Tree Photography



OFFICE ADDRESS

Putterills Hitchin
60 Hermitage Road
Hitchin
SG5 1DB

CONTACT DETAILS

01462 632222
hitchin@putterills.co.uk
www.putterills.co.uk