



PUTTERILLS

est. 1992

Valley Road, Welwyn Garden City, AL8 7DP  
Guide Price £950,000

## PROPERTY SUMMARY

Set in the sought-after West Side of Welwyn Garden City, this extended four-bedroom semi-detached home on Valley Road offers an ideal blend of space, comfort, and convenience.

The ground floor features three versatile reception rooms and a well-appointed kitchen opening onto a private wraparound garden — perfect for family life and entertaining. Upstairs, four spacious bedrooms are served by two modern bath/shower rooms, with plenty of natural light throughout.

Further benefits include a garage and ample off-road parking. Ideally located close to excellent schools, the town centre, and fast rail links to London King's Cross, this is a superb family home in a prime location.

4



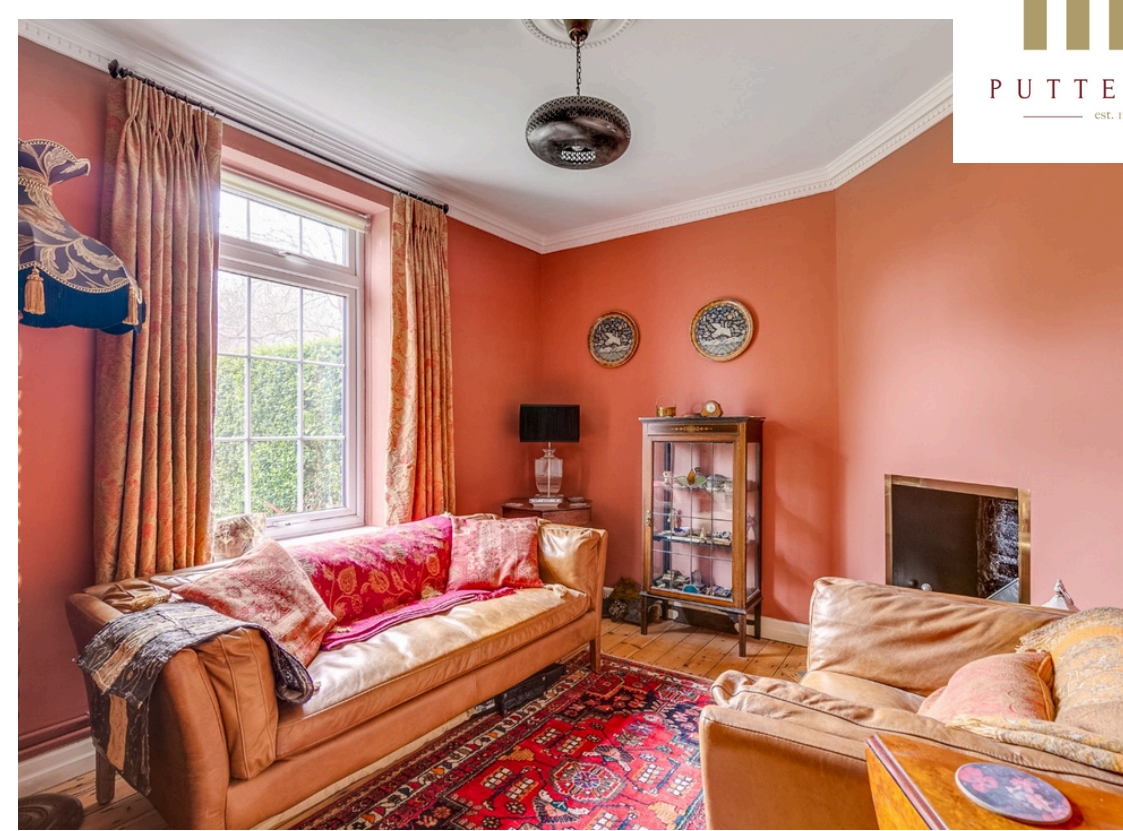
2



3









PUTTERILLS  
— est. 1992 —









PUTTERILLS  
— est. 1992 —





LOCAL AUTHORITY  
Welwyn Hatfield

TENURE Freehold

COUNCIL TAX BAND  
F

VIEWINGS

By prior appointment only

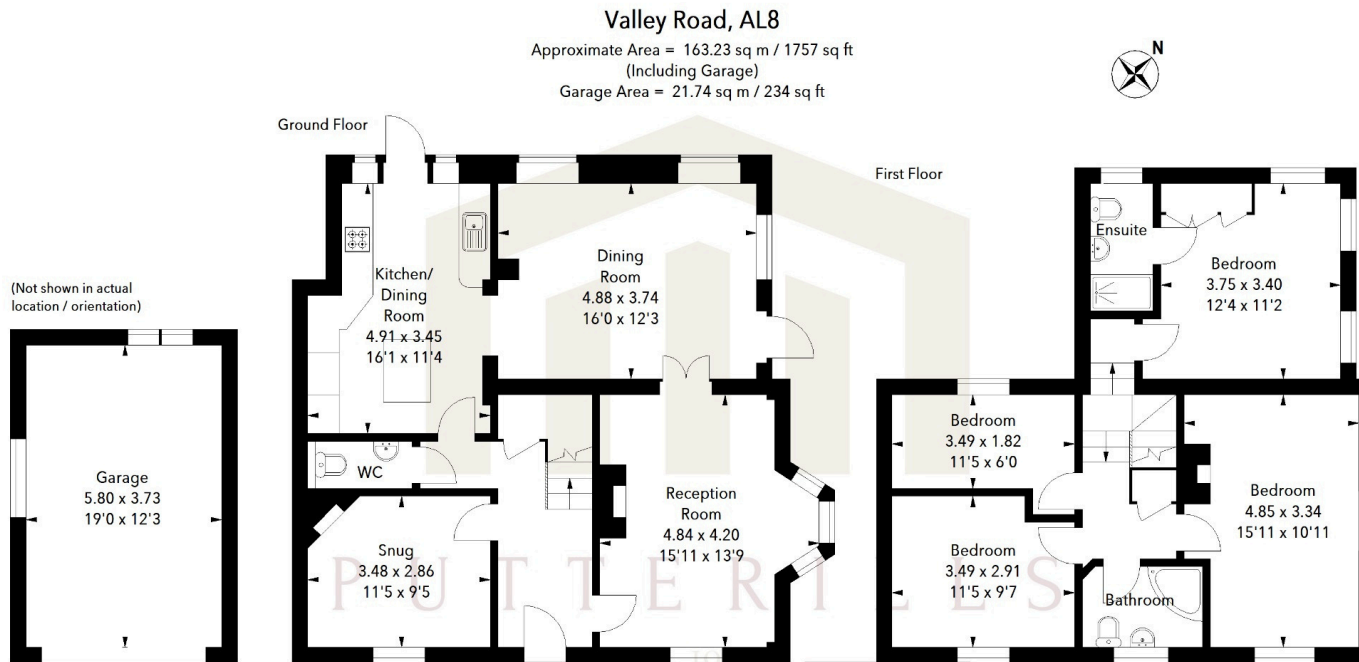


Illustration For Identification Purposes Only.  
All measurements and areas are approximate, not to scale.  
© Orange Tree Photography

Score	Energy rating	Current	Potential
92+	A		
81-91	B		86 B
69-80	C		
55-68	D	60 D	
39-54	E		
21-38	F		
1-20	G		

Agents Note: Whilst every care has been taken to prepare these particulars, they are for guidance purposes only. All measurements are approximate and are for general guidance purposes only and whilst every care has been taken to ensure their accuracy, they should not be relied upon and potential buyers/tenants are advised to recheck the measurements



OFFICE ADDRESS  
34 Wigmores North  
Welwyn Garden  
City  
Hertfordshire  
AL8 6PH

CONTACT DETAILS  
[01707 393333](tel:01707393333)  
[wgc@putterills.co.uk](mailto:wgc@putterills.co.uk)  
[www.putterills.co.uk](http://www.putterills.co.uk)