




PUTTERILLS
— est. 1992 —

Knightsfield, Welwyn Garden City, AL8 7NJ
Offers Over £750,000

PROPERTY SUMMARY

Upon entering, the open-plan kitchen/diner forms the heart of the home, offering a practical layout suited to modern family life. The space is bright and well-proportioned, with room for dining and bi-fold doors opening onto the rear garden.

4 

The property further benefits from two well-proportioned reception rooms, providing versatile spaces for relaxation and entertainment. One of these inviting rooms boasts a charming log burner, perfect for cosy evenings and adding a touch of character to the home.

2 

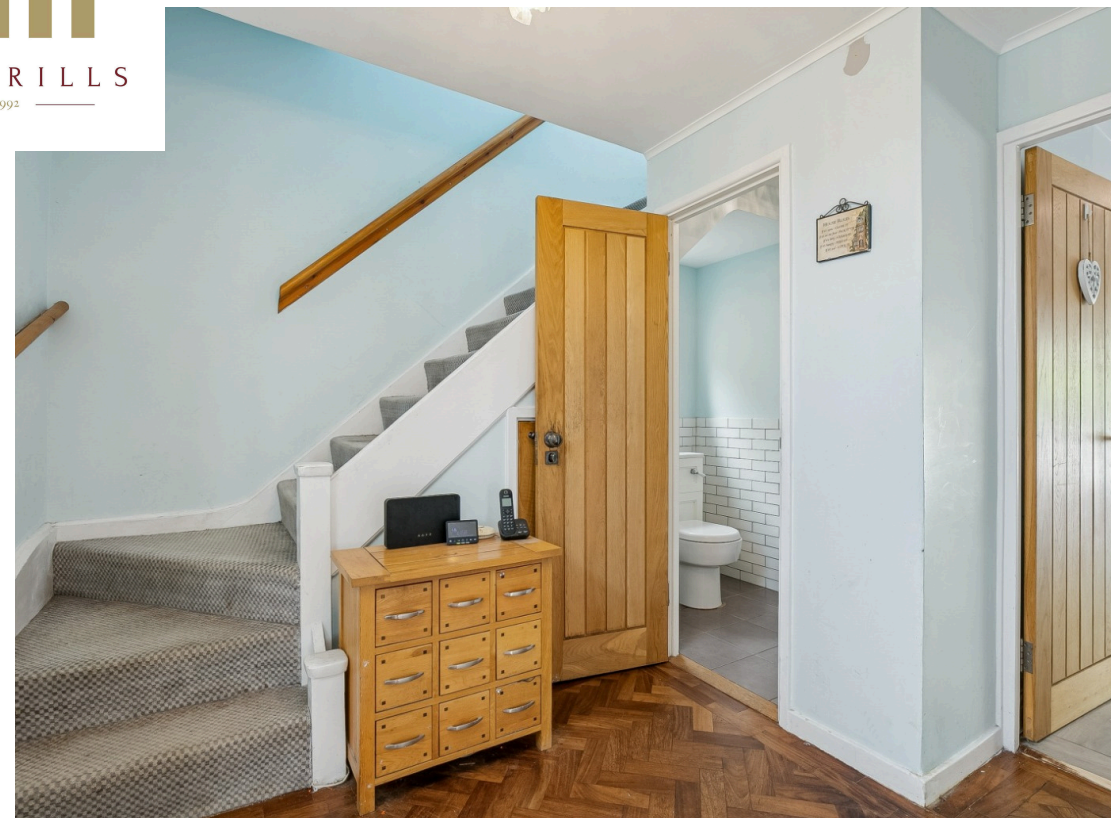
Ascending to the first floor, you will find four generously sized bedrooms, each offering comfortable accommodation. These rooms are thoughtfully arranged and served by a modern family bathroom, finished to a high standard.

2 

Featuring a generous rear garden, with a versatile outbuilding, currently utilised as a snug/gym. To the front, a convenient driveway offers off-road parking, a valuable asset in this popular area.















LOCAL AUTHORITY
Welwyn Hatfield

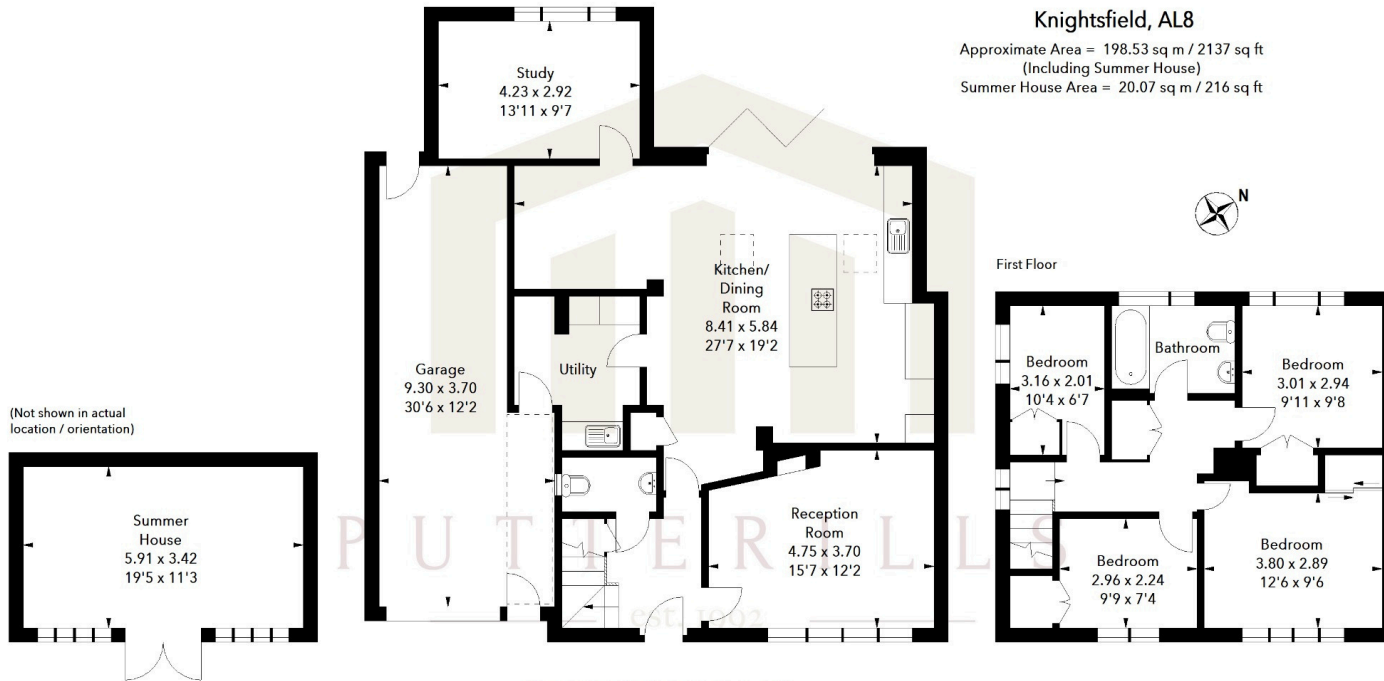
TENURE Freehold

COUNCIL TAX BAND
F

VIEWINGS

By prior appointment only

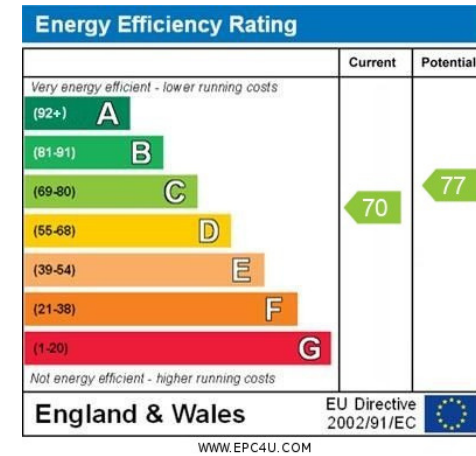
Ground Floor



Knightsfield, AL8

Approximate Area = 198.53 sq m / 2137 sq ft
(Including Summer House)
Summer House Area = 20.07 sq m / 216 sq ft

Illustration For Identification Purposes Only.
All measurements and areas are approximate, not to scale.
© Orange Tree Photography



Agents Note: Whilst every care has been taken to prepare these particulars, they are for guidance purposes only. All measurements are approximate and are for general guidance purposes only and whilst every care has been taken to ensure their accuracy, they should not be relied upon and potential buyers/tenants are advised to recheck the measurements



OFFICE ADDRESS
34 Wigmores North
Welwyn Garden
City
Hertfordshire
AL8 6PH

CONTACT DETAILS
01707 393333
wgc@putterills.co.uk
www.putterills.co.uk