



PUTTERILLS

est. 1992



Deacons Way, Hitchin, SG5 2UF  
Guide Price: £850,000

# PROPERTY SUMMARY

Set in a quiet, sought-after cul-de-sac in Hitchin, this impressive four-bedroom detached family home occupies a generous corner plot and offers spacious, versatile living throughout. Featuring three reception rooms, a bright conservatory, a well-appointed kitchen with granite worktops, principal bedroom with en-suite, study space, generous rear garden, garage, and ample driveway parking, the property is ideally located just 0.7 miles from Hitchin station and close to the town centre, excellent schools, and superb transport links.

4



2



3



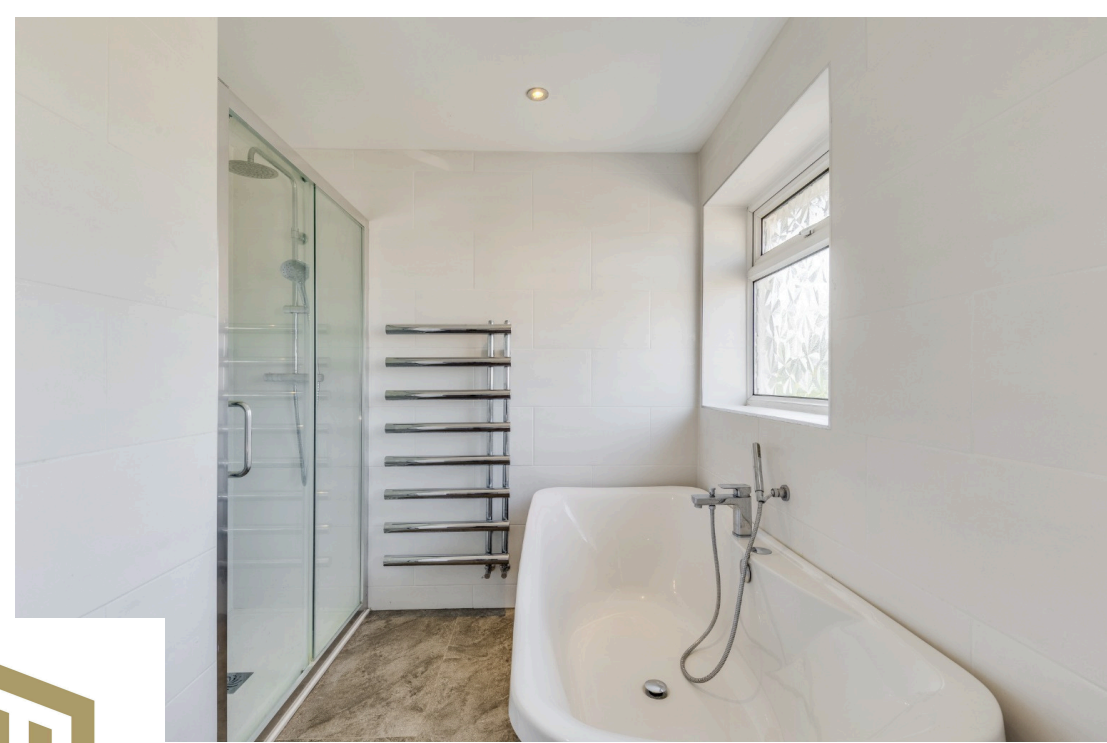
















LOCAL AUTHORITY  
North Herts

TENURE  
Freehold

COUNCIL TAX BAND  
F

VIEWINGS  
By prior appointment only

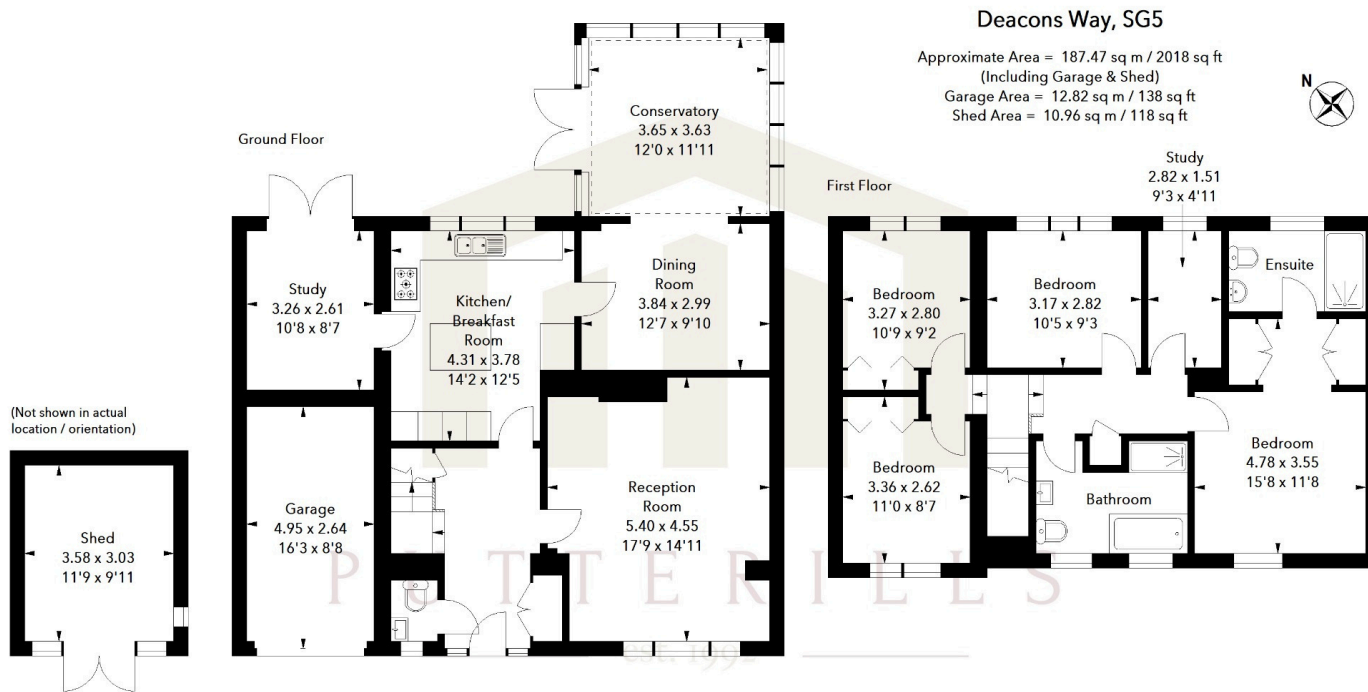
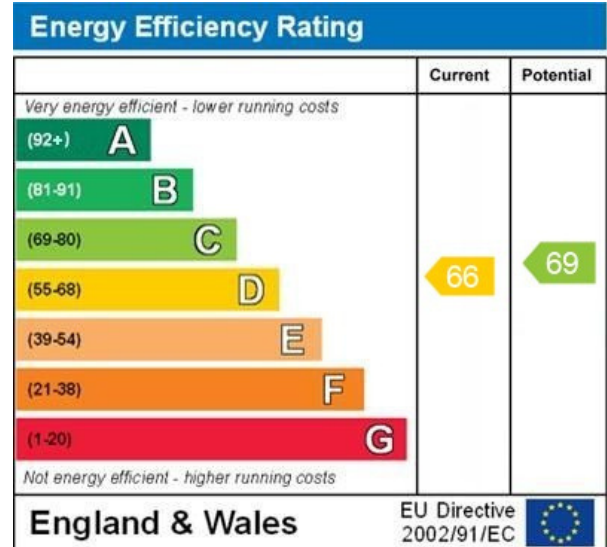


Illustration For Identification Purposes Only.  
All measurements and areas are approximate, not to scale.  
© Orange Tree Photography



WWW.EPC4U.COM



OFFICE ADDRESS

Putterills Hitchin  
60 Hermitage Road  
Hitchin  
SG5 1DB

CONTACT DETAILS

01462 632222  
hitchin@putterills.co.uk  
www.putterills.co.uk