



PUTTERILLS

est. 1992

Walnut Way, Ickleford, Hitchin, SG5 3XT  
Guide Price: £800,000

## PROPERTY SUMMARY

Situated within the highly desirable village of Ickleford, this well-balanced four-bedroom detached home combines spacious family living with a welcoming village lifestyle close to Hitchin. The property offers flexible accommodation including two reception rooms, a generous main living space opening onto the garden, a separate utility room and four well-proportioned bedrooms, with the principal bedroom benefiting from a modern en-suite. Outside, the secure rear garden and private driveway add further practicality, while excellent schooling, countryside walks, village amenities and Ickleford Sports Club all contribute to the strong sense of community that makes this location so sought after.

4



2



2













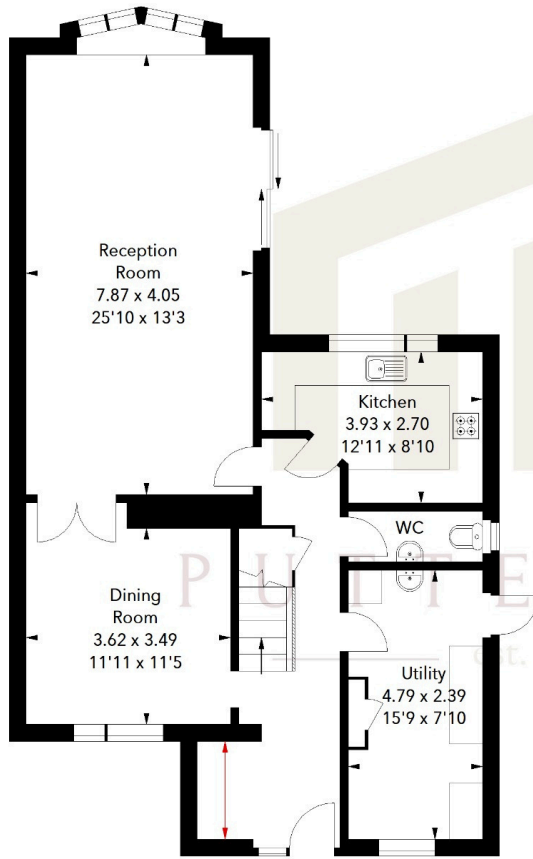




## Walnut Way, SG5

Approximate Area = 162.48 sq m / 1749 sq ft

Ground Floor



First Floor

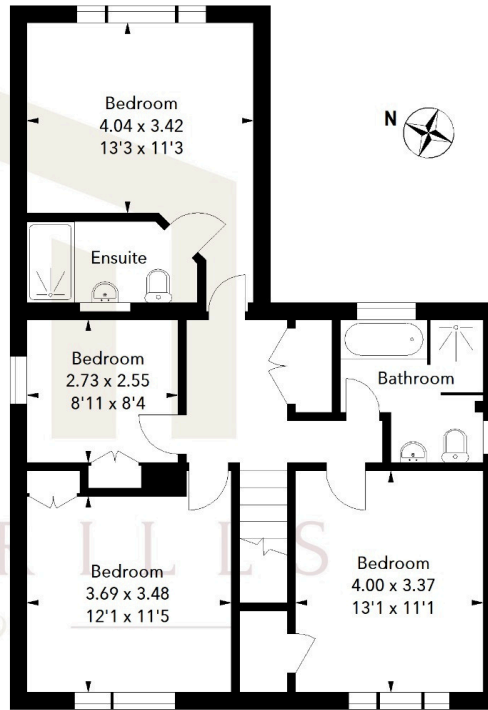


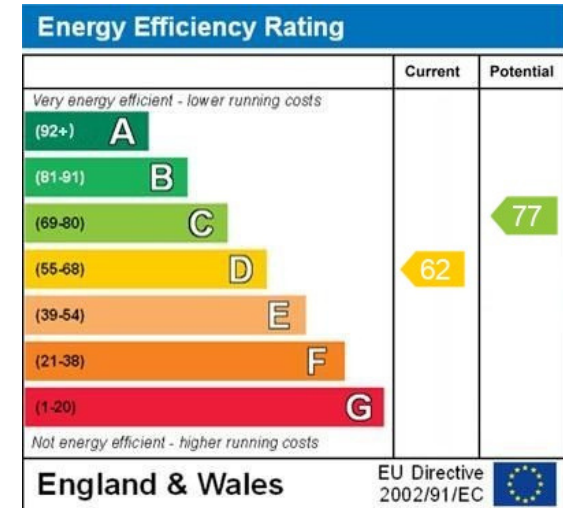
Illustration For Identification Purposes Only.  
All measurements and areas are approximate, not to scale.  
© Orange Tree Photography

LOCAL AUTHORITY  
North Herts

TENURE  
Freehold

COUNCIL TAX BAND  
E

VIEWINGS  
By prior appointment only



WWW.EPC4U.COM



### OFFICE ADDRESS

Putterills Hitchin  
60 Hermitage Road  
Hitchin  
SG5 1DB

### CONTACT DETAILS

01462 632222  
hitchin@putterills.co.uk  
www.putterills.co.uk