



PUTTERILLS

est. 1992



Mill Lane, St. Ippolyts, Hitchin, SG4 7NN

Guide Price: £1,575,000

# PROPERTY SUMMARY

An impressive five-bedroom detached family home in the highly desirable village of St Ippolyts, just moments from Hitchin, offering over 3,300 sq ft of versatile and beautifully presented accommodation, available chain free. The property features multiple spacious reception rooms, a high-specification kitchen with solid wood cabinetry, granite worktops and central island, and five well-proportioned bedrooms, all with built-in storage, plus a flexible loft room. Externally, a large private driveway provides ample parking, while the landscaped rear garden with patio offers an ideal space for outdoor entertaining. Combining village charm with excellent local amenities, reputable schools and convenient transport links to London, this is a superb family home perfectly suited to modern living.

5



2



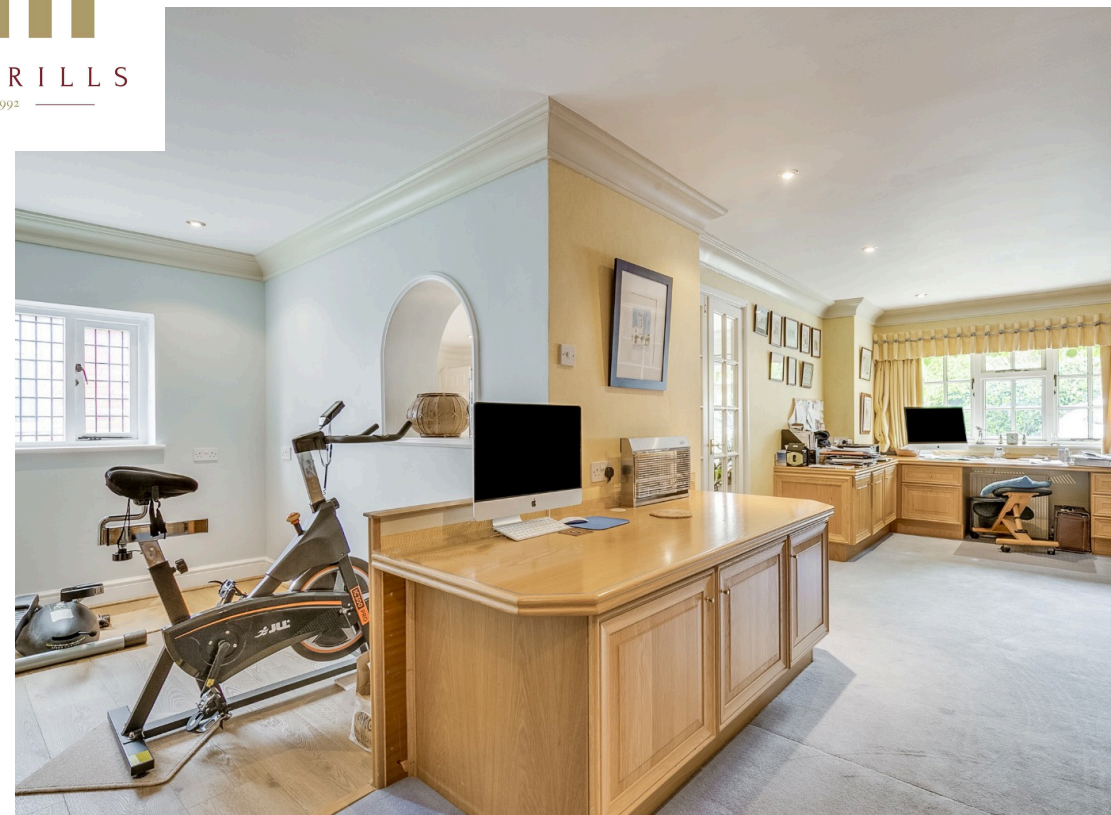
4







PUTTERILLS  
— est. 1992 —









PUTTERILLS  
— est. 1992 —









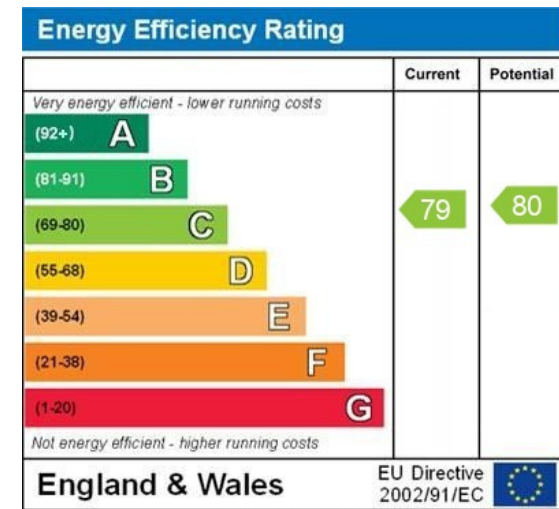
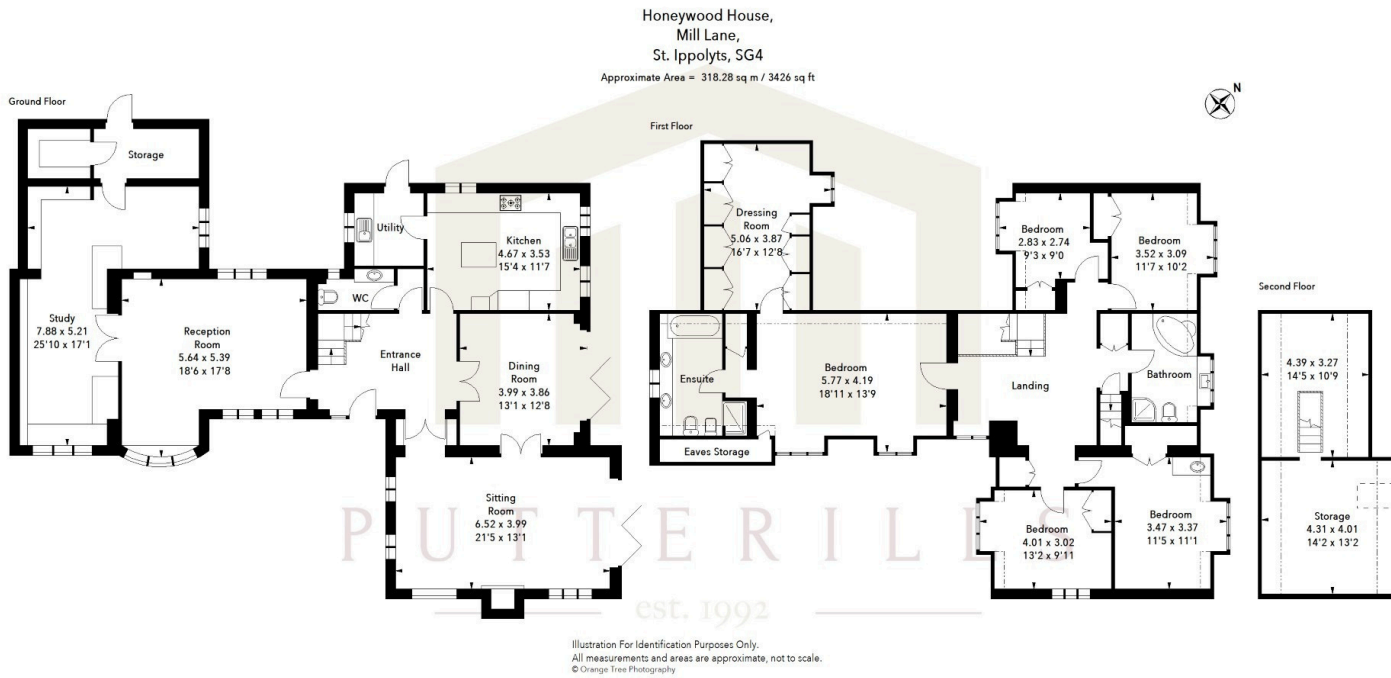


LOCAL AUTHORITY  
North Herts

TENURE  
Freehold

COUNCIL TAX BAND  
G

VIEWINGS  
By prior appointment only



WWW.EPC4U.COM



OFFICE ADDRESS

Putterills Hitchin  
60 Hermitage Road  
Hitchin  
SG5 1DB

CONTACT DETAILS

01462 632222  
hitchin@putterills.co.uk  
www.putterills.co.uk