



PUTTERILLS

est. 1992



Hicce House, Brand Street, Hitchin, SG51HX

Guide Price: £350,000

Leasehold

PROPERTY SUMMARY

A chain-free, top-floor two-bedroom, two-bathroom apartment in central Hitchin, offering modern, well-presented living with a spacious reception area and contemporary kitchen. The property includes an en-suite to the master bedroom, a second bathroom, secure gated access, lift access, and private parking. Ideally located close to local amenities and Hitchin train station, it's a convenient and secure home suited to town centre living.

2



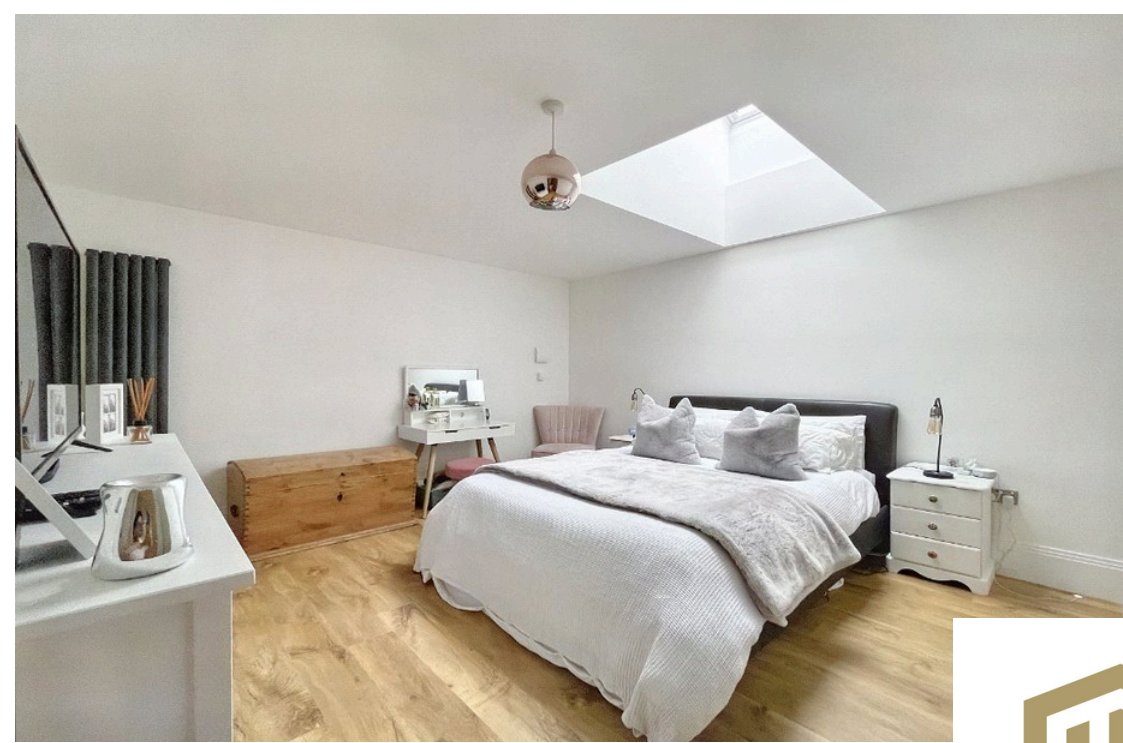
2



1

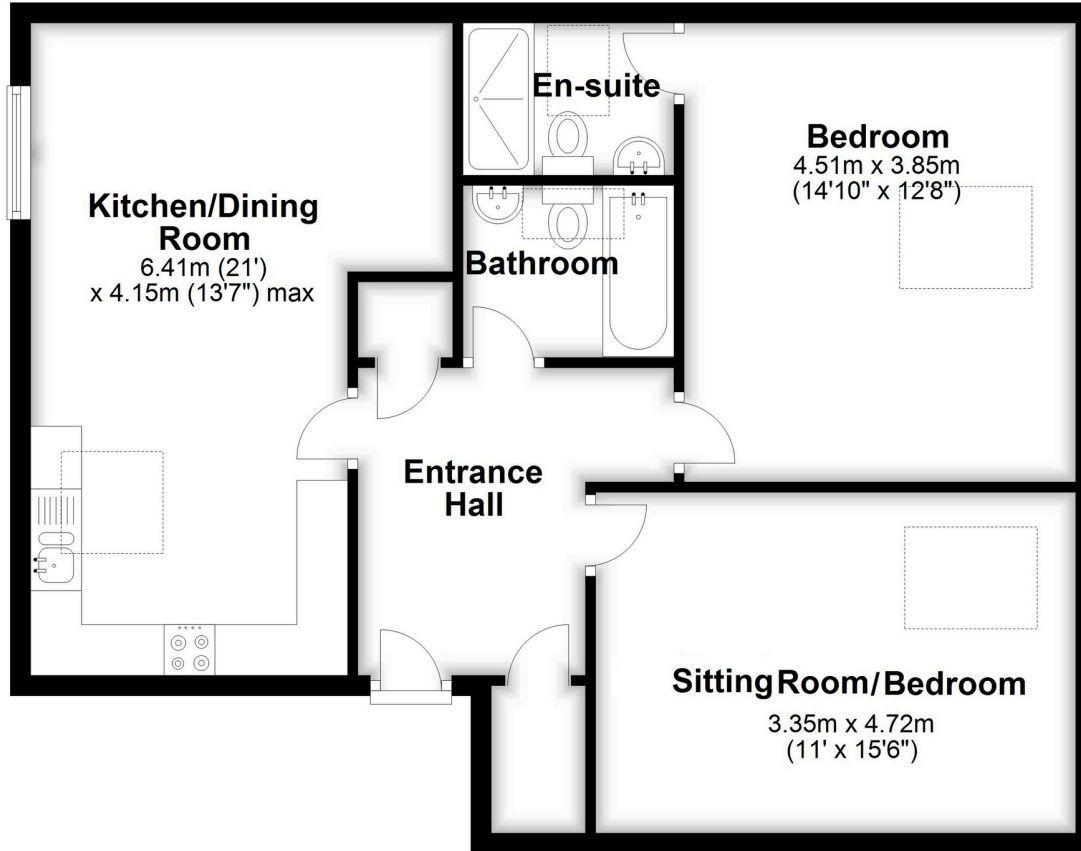








Top Floor
 Approx. 74.8 sq. metres (804.7 sq. feet)



Total area: approx 74.8 sq. metres (804.7 sq. feet)

LOCAL AUTHORITY
 North Herts

TENURE
 Freehold

COUNCIL TAX BAND
 G

VIEWINGS
 By prior appointment only

Energy Efficiency Rating		
	Current	Potential
Very energy efficient - lower running costs		
(92+) A		
(81-91) B		
(69-80) C		
(55-68) D	62	62
(39-54) E		
(21-38) F		
(1-20) G		
Not energy efficient - higher running costs		
England, Scotland & Wales	EU Directive 2002/91/EC	



OFFICE ADDRESS

Putterills Hitchin
 60 Hermitage Road
 Hitchin
 SG5 1DB

CONTACT DETAILS

01462 632222
 hitchin@putterills.co.uk
 www.putterills.co.uk