



PUTTERILLS

est. 1992

Poppyfields, Welwyn Garden City, AL7 2HJ
Guide Price £500,000

PROPERTY SUMMARY

Situated in a highly sought-after area of Welwyn Garden City, this well-presented three-bedroom semi-detached home offers comfortable, flexible living ideal for families or first-time buyers.

3



The property features a bright living area, a stylish kitchen, and a versatile conservatory opening onto a private rear garden. A downstairs WC and a converted garage — perfect as a home office, gym, or additional living space — add further practicality.

1



Upstairs are three well-proportioned bedrooms served by a family bathroom. With off-street parking and a convenient location close to shops, schools, and excellent transport links to London, this is a superb opportunity in a popular neighbourhood.

2





THIS KITCHEN NEVER
CLOSES, AS LONG AS
YOU'RE COOKING

10
YEAR
WARRANTY





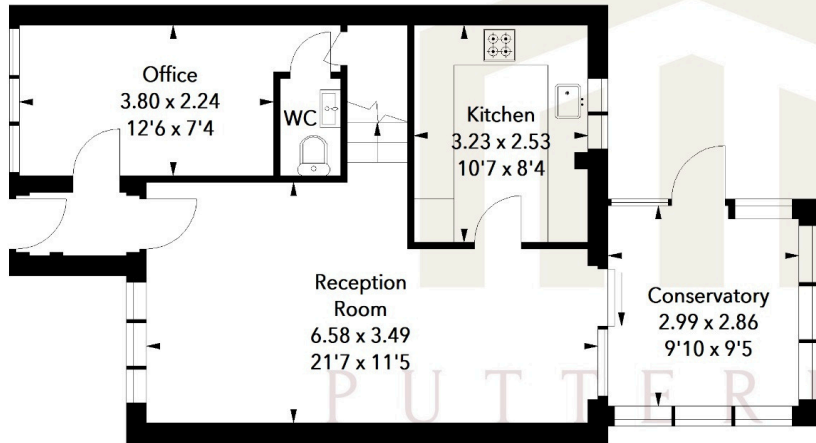


Poppyfields, AL7

Approximate Area = 94.39 sq m / 1016 sq ft



Ground Floor



First Floor



Illustration For Identification Purposes Only.
All measurements and areas are approximate, not to scale.
© Orange Tree Photography

LOCAL AUTHORITY
Welwyn Hatfield

TENURE Freehold

COUNCIL TAX BAND
D

VIEWINGS

By prior appointment only

Score	Energy rating	Current	Potential
92+	A		
81-91	B		88 B
69-80	C	74 C	
55-68	D		
39-54	E		
21-38	F		
1-20	G		

Agents Note: Whilst every care has been taken to prepare these particulars, they are for guidance purposes only. All measurements are approximate and are for general guidance purposes only and whilst every care has been taken to ensure their accuracy, they should not be relied upon and potential buyers/tenants are advised to recheck the measurements



OFFICE ADDRESS

34 Wigmores North
Welwyn Garden
City
Hertfordshire
AL8 6PH

CONTACT DETAILS

01707 393333
wgc@putterills.co.uk
www.putterills.co.uk