



PUTTERILLS
— est. 1992 —

Guide Price £700,000
Brockswood Lane, Welwyn Garden City, Hertfordshire, AL8 7BG

PROPERTY SUMMARY

We are pleased to present this substantial three-bedroom semi-detached family home, situated on the highly sought-after West Side of Welwyn Garden City.

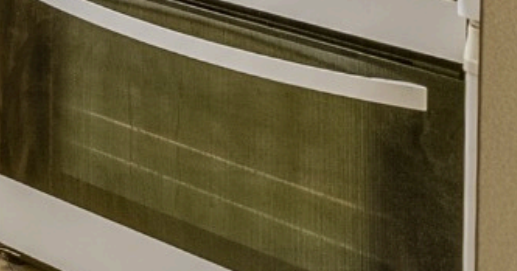
Already extended and offering excellent potential, the property features three versatile reception rooms, a kitchen with adjoining utility and shower room, three generous bedrooms, a family bathroom and separate W/C. Outside, a large and mature rear garden provides a wonderful private setting, while off-road parking and a garage add further practicality.

Offered with no onward chain and extending to over 1,500 sq ft, the property provides excellent potential for modernisation and further enhancement.











PUTTERILLS
— est. 1992 —











PUTTERILLS
— est. 1992 —





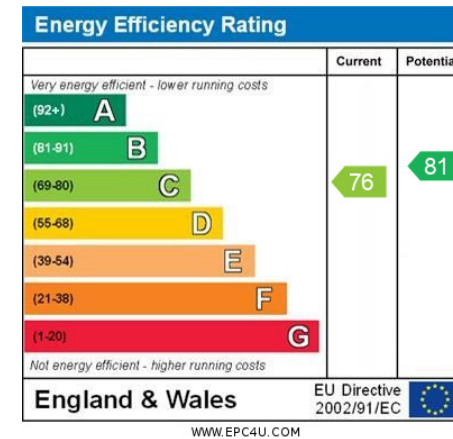


LOCAL AUTHORITY
Welwyn Hatfield

TENURE
Leasehold

COUNCIL TAX BAND E

VIEWINGS
By prior appointment only

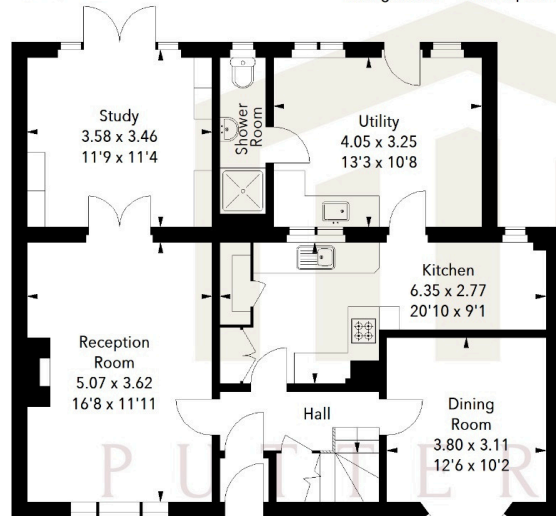


Agents Note: Whilst every care has been taken to prepare these particulars, they are for guidance purposes only. All measurements are approximate and are for general guidance purposes only and whilst every care has been taken to ensure their accuracy, they should not be relied upon and potential buyers/tenants are advised to recheck the measurements

Brockwood Lane, AL8

Approximate Area = 151.52 sq m / 1631 sq ft
(Including Garage)
Garage Area = 15.89 sq m / 171 sq ft

Ground Floor



First Floor

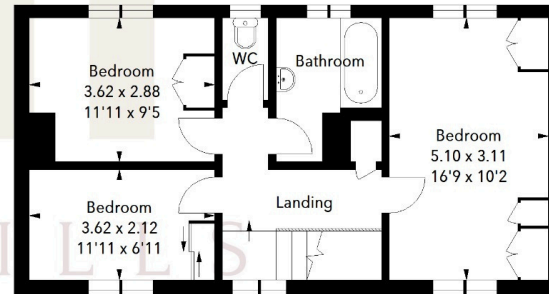


Illustration For Identification Purposes Only.
All measurements and areas are approximate, not to scale.
© Orange Tree Photography



OFFICE ADDRESS
Putterills Welwyn
Garden City
34 Wigmore North,
Hertfordshire, AL8
6PH

CONTACT DETAILS

01707 393333
wgc@putterills.co.uk
www.putterills.co.uk