



PUTTERILLS  
— est. 1992 —

Ransom Yard, Bancroft, Hitchin, SG5 1NB  
Offers Over: £650,000

# PROPERTY SUMMARY

This exceptional four-bedroom home in the sought-after Bancroft area of Hertfordshire combines modern living with excellent town centre convenience. It features a bright open-plan living, dining, and kitchen space filled with natural light, four well-proportioned bedrooms including a principal bedroom with en suite, and a family bathroom. Outside, there is a private low-maintenance courtyard garden, secure gated access, and a dedicated carport for off-street parking. Ideally located within walking distance of local shops, restaurants, and amenities, and just 0.8 miles from Hitchin railway station, it offers excellent links to London and is perfect for families and professionals alike.

4



2



1









PUTTERILLS  
— est. 1992 —







LOCAL AUTHORITY  
North Herts

TENURE  
Freehold

### Ransom Yard, SG5

Approximate Area = 104.70 sq m / 1127 sq ft

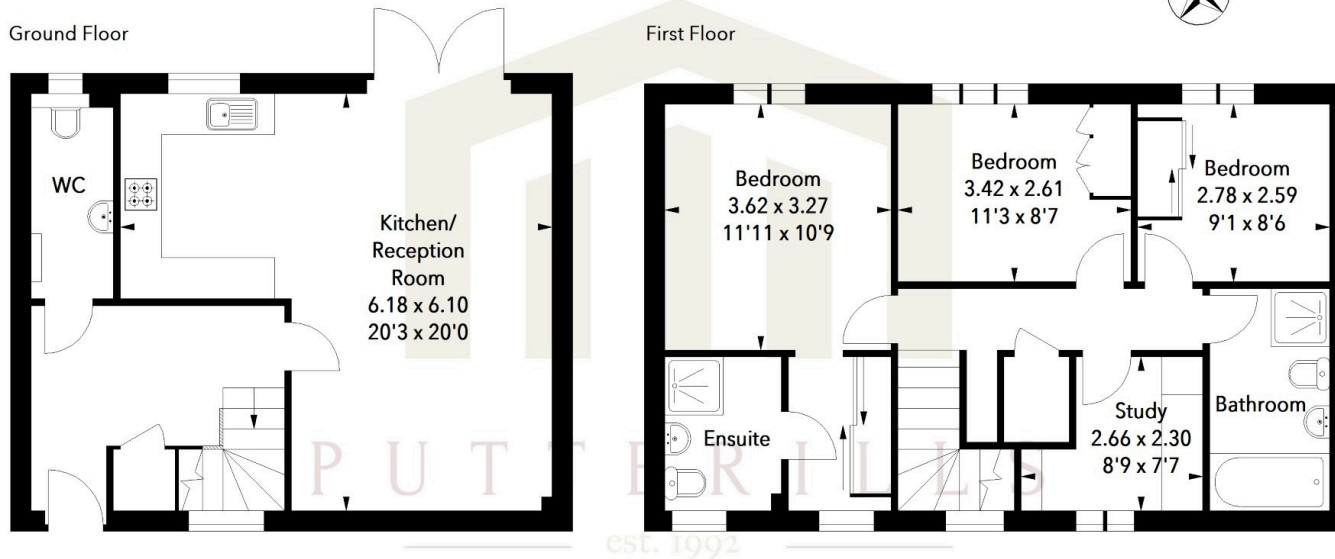
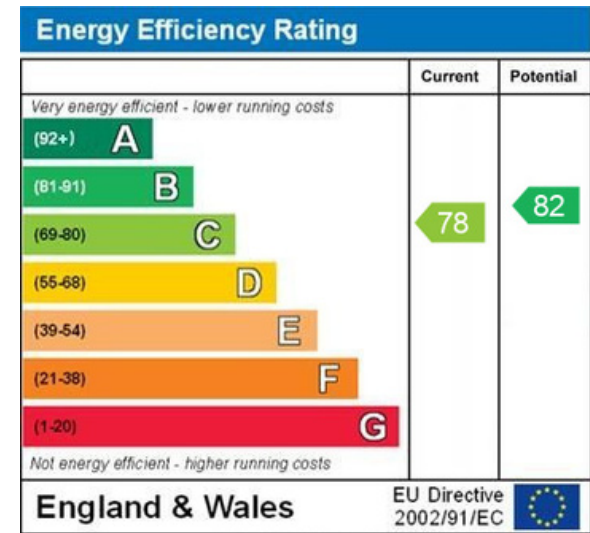


Illustration For Identification Purposes Only.  
All measurements and areas are approximate, not to scale.  
© Orange Tree Photography

### VIEWINGS

By prior appointment only



#### OFFICE ADDRESS

Putterills Hitchin  
60 Hermitage Road  
Hitchin  
SG5 1DB

#### CONTACT DETAILS

01462 632222  
hitchin@putterills.co.uk  
www.putterills.co.uk