



PUTTERILLS

est. 1992



Guide Price £1,895,000

1 Vera Lane, Welwyn, Hertfordshire, AL6 0EW

PROPERTY SUMMARY

We are proud to present this exceptional five-bedroom detached residence, set within a peaceful countryside setting just off Harmer Green in Digswell.

Recently the subject of a comprehensive refurbishment, the home combines elegant contemporary design with beautifully balanced family living, centred around a stunning open-plan kitchen, dining and family space with uninterrupted views across the surrounding landscape. Extending beyond the principal accommodation, a fully self-contained annexe provides outstanding flexibility for multi-generational living, guest accommodation, home working or leisure use.

Surrounded by landscaped gardens and enjoying a private yet highly convenient position within walking distance of Welwyn North station, this is a rare opportunity to acquire a turnkey country home that effortlessly balances luxury, practicality and connectivity.











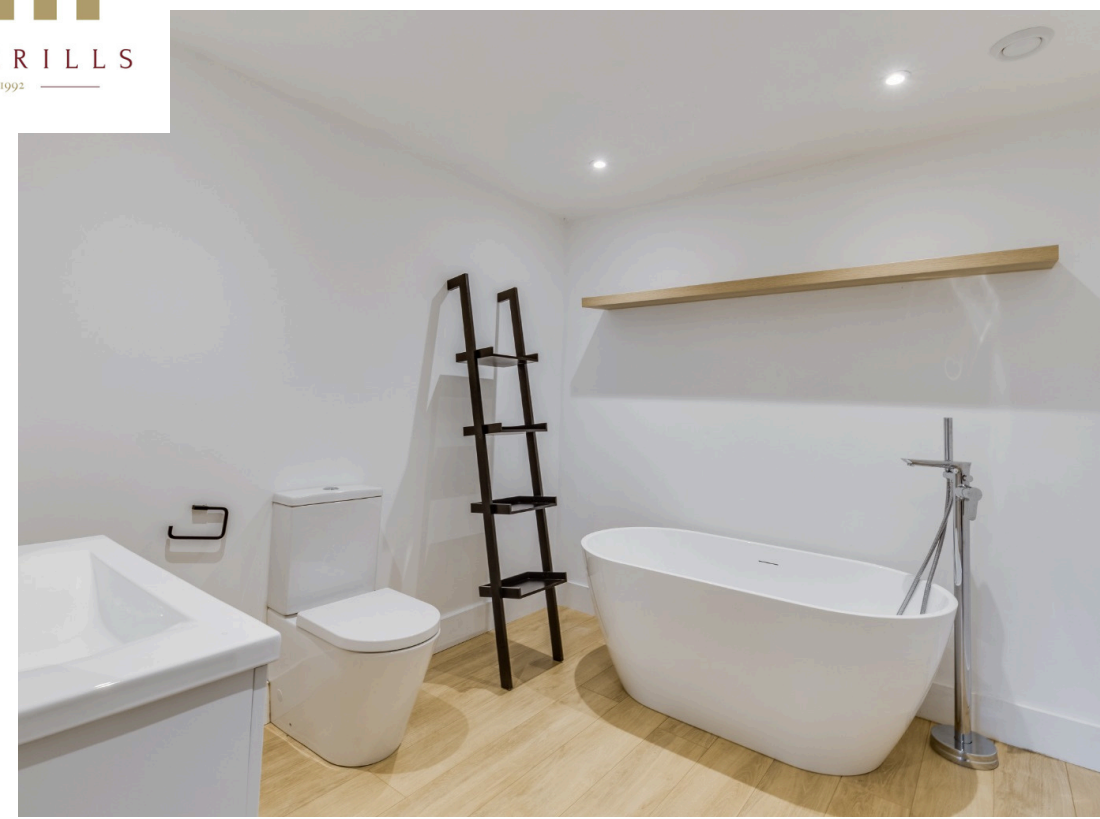




















PUTTERILLS
— est. 1992 —

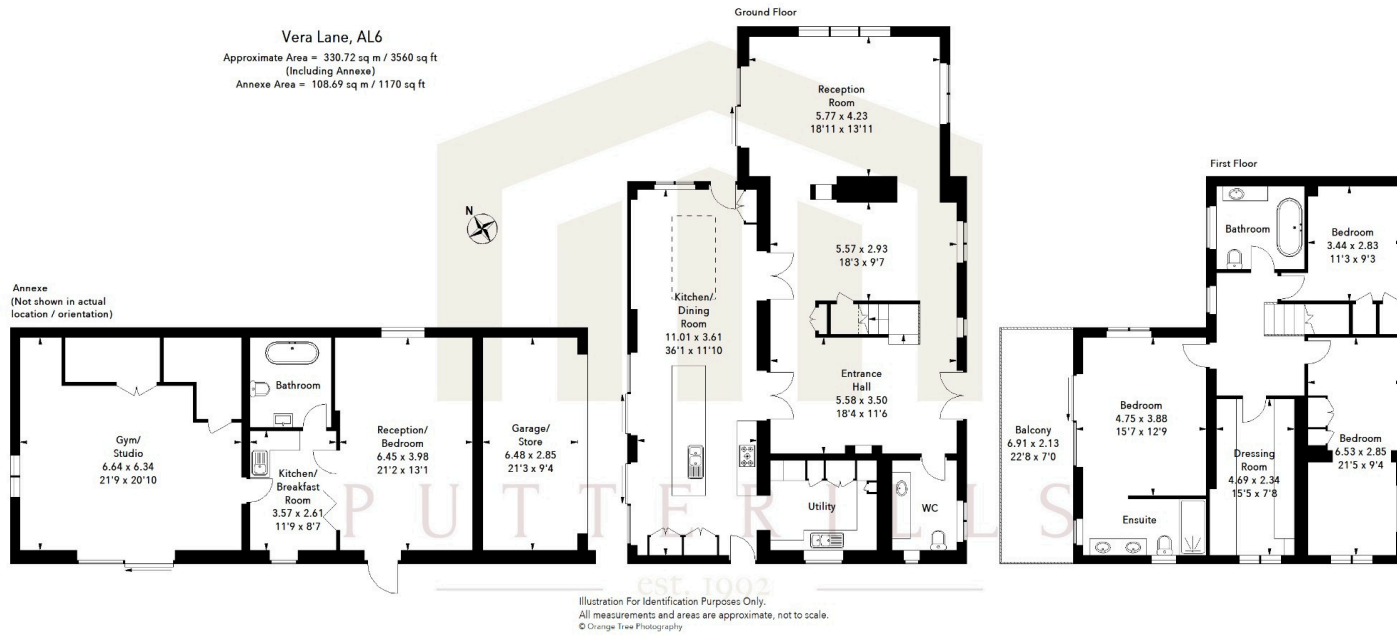


LOCAL AUTHORITY
Welwyn Hatfield

TENURE
Freehold

COUNCIL TAX BAND
G

VIEWINGS
By prior appointment only



Energy Efficiency Rating		
	Current	Potential
Very energy efficient - lower running costs		
(92+)		
A		
(81-91)		
B		
(69-80)		
C	75	79
(55-68)		
D		
(39-54)		
E		
(21-38)		
F		
(1-20)		
G		
Not energy efficient - higher running costs		
England & Wales		EU Directive 2002/91/EC
WWW.EPC4U.COM		

Agents Note: Whilst every care has been taken to prepare these particulars, they are for guidance purposes only. All measurements are approximate and are for general guidance purposes only and whilst every care has been taken to ensure their accuracy, they should not be relied upon and potential buyers/tenants are advised to recheck the measurements



OFFICE ADDRESS
Putterills Welwyn
Garden City
34 Wigmore North,
Hertfordshire, AL8
6PH

CONTACT DETAILS

01707 393333
wgc@putterills.co.uk
www.putterills.co.uk