



PUTTERILLS

est. 1992



Lower Road, Breachwood Green, SG4 8NS  
Guide Price: £450,000

# PROPERTY SUMMARY

Set within the peaceful village of Breachwood Green and surrounded by beautiful countryside, this charming three-bedroom bungalow offers the perfect blend of space, versatility, and village living. With stunning rural views, generous reception rooms, and a bright modern kitchen/diner at its heart, the home has been designed for both comfortable family life and relaxed entertaining. The delightful rear garden provides a tranquil escape with scenic walks quite literally on your doorstep, while the large driveway, carport, and workshop add further practicality. Ideally positioned for access to Hitchin, excellent schools, and commuter links, this wonderful home offers a rare opportunity to enjoy countryside living without compromise.

3



1



2















Ground Floor

### Lower Road, SG4

Approximate Area = 173.17 sq m / 1864 sq ft  
 (Including Eaves Storage & Garage)  
 Eaves Storage Area = 23.88 sq m / 257 sq ft  
 Garage Area = 17.09 sq m / 184 sq ft

First Floor



(Not shown in actual location / orientation)

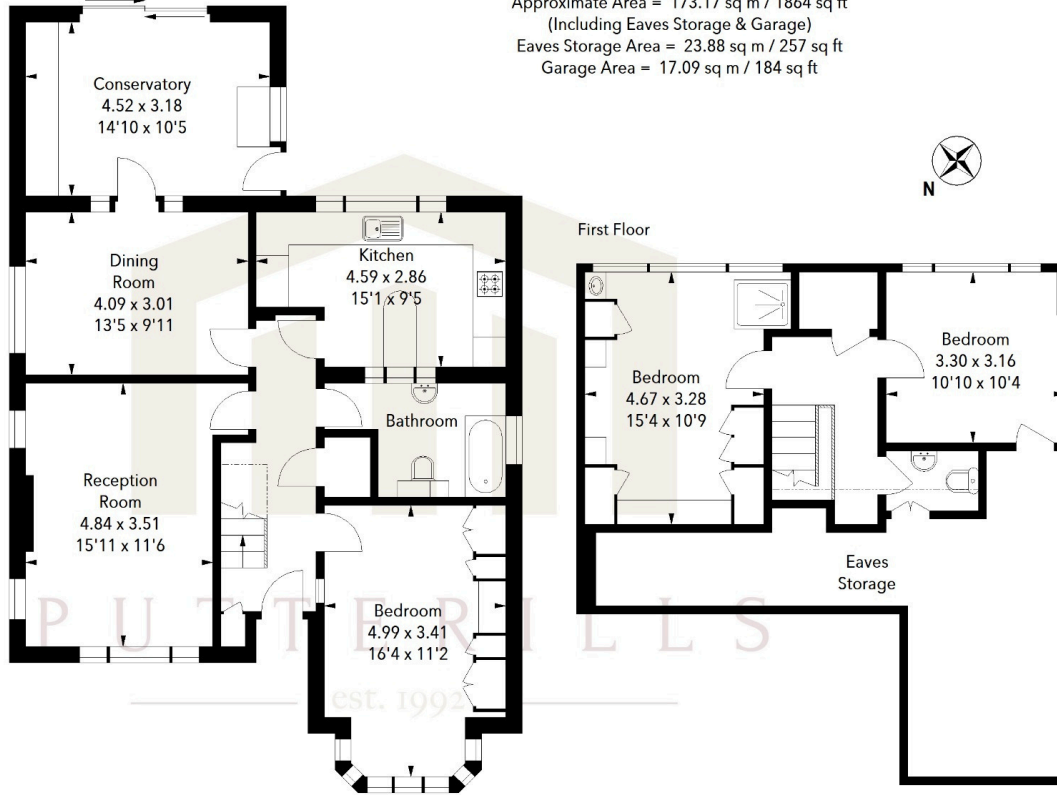
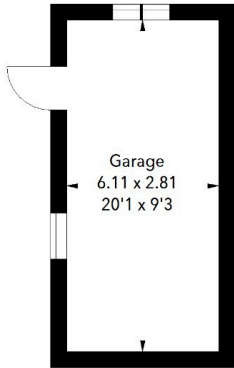


Illustration For Identification Purposes Only.  
 All measurements and areas are approximate, not to scale.  
 © Orange Tree Photography

LOCAL AUTHORITY  
 North Herts

TENURE  
 Freehold

COUNCIL TAX BAND  
 F

VIEWINGS  
 By prior appointment only

Energy Efficiency Rating		
	Current	Potential
Very energy efficient - lower running costs		
(92+) <b>A</b>		
(81-91) <b>B</b>		
(69-80) <b>C</b>	70	77
(55-68) <b>D</b>		
(39-54) <b>E</b>		
(21-38) <b>F</b>		
(1-20) <b>G</b>		
Not energy efficient - higher running costs		
<b>England &amp; Wales</b>	EU Directive 2002/91/EC	

WWW.EPC4U.COM



OFFICE ADDRESS

Putterills Hitchin  
 60 Hermitage Road  
 Hitchin  
 SG5 1DB

CONTACT DETAILS

01462 632222  
 hitchin@putterills.co.uk  
 www.putterills.co.uk