



PUTTERILLS

est. 1992



Bunyan Road, Hitchin, SG5 1NN
Guide Price: £525,000

PROPERTY SUMMARY

Thoughtfully improved over time, this charming Hitchin home has been carefully shaped around everyday life, offering warm, practical living within one of the town's most convenient locations. The property features a bright kitchen/breakfast room, generous reception space, two well-proportioned bedrooms and a beautifully maintained garden, alongside a versatile outbuilding currently used as a hair studio, ideal as a home office, gym or creative workspace. Positioned approximately 0.7 miles from Hitchin station and within easy reach of the town centre, cafés, restaurants and well-regarded schooling, this chain complete home combines flexibility, lifestyle and connectivity in equal measure.

2



1



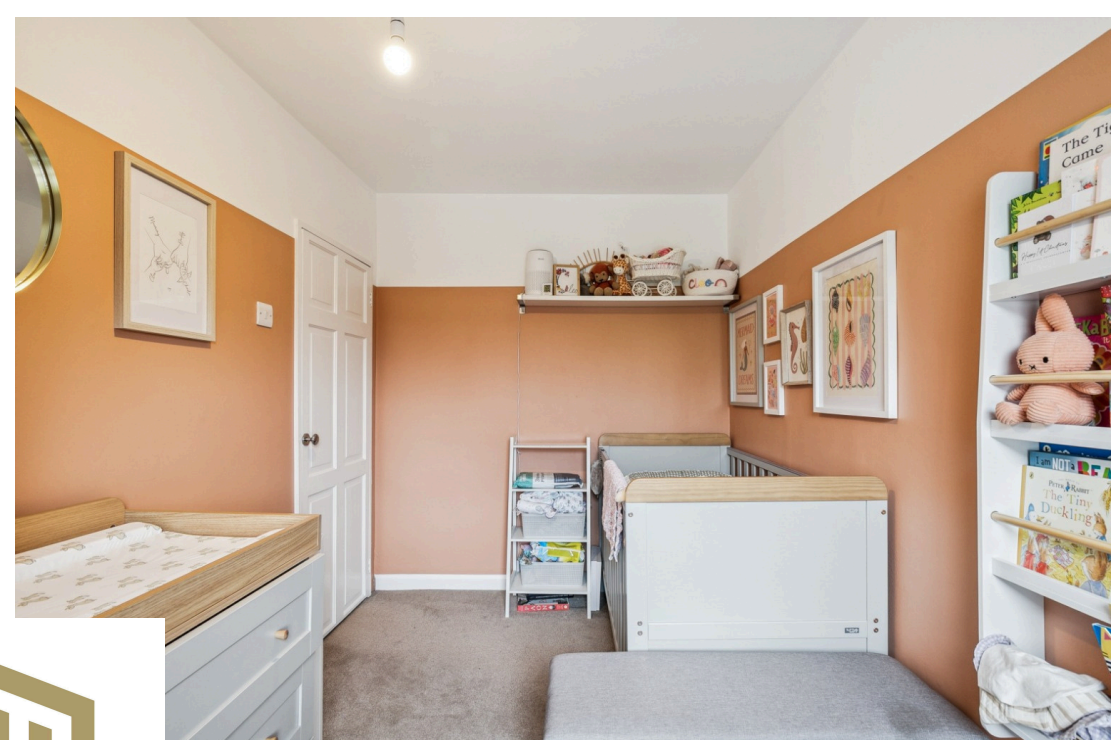
1















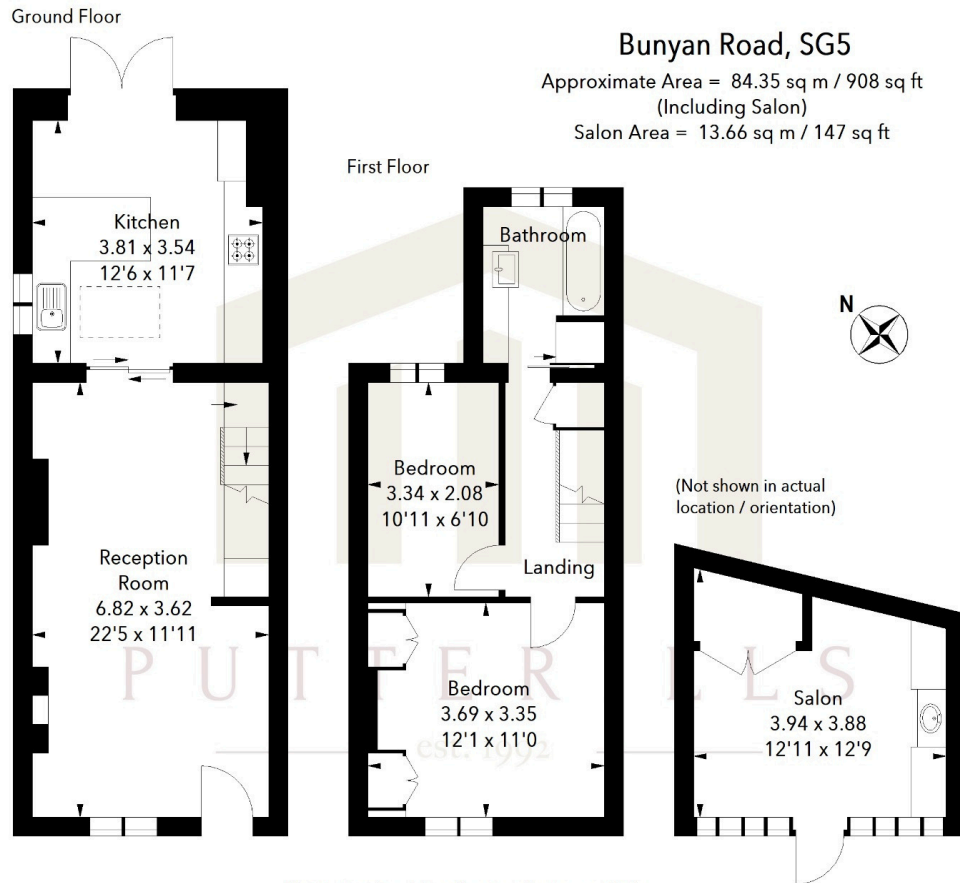


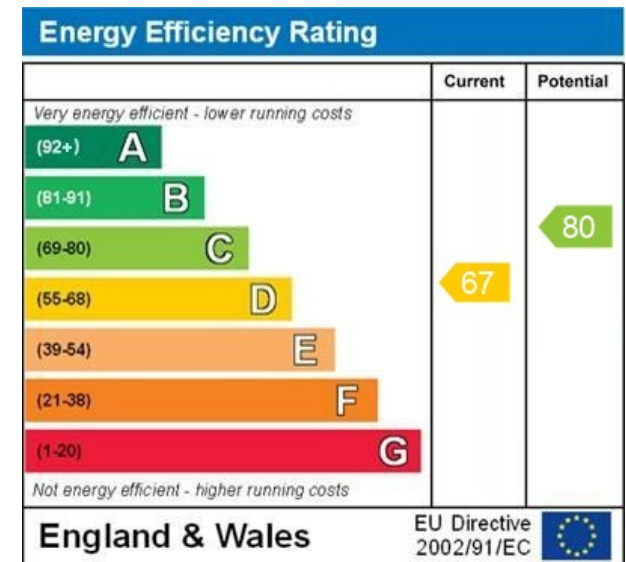
Illustration For Identification Purposes Only.
 All measurements and areas are approximate, not to scale.
 © Orange Tree Photography

LOCAL AUTHORITY
 North Herts

TENURE
 Freehold

COUNCIL TAX BAND
 C

VIEWINGS
 By prior appointment only



WWW.EPC4U.COM



OFFICE ADDRESS

Putterills Hitchin
 60 Hermitage Road
 Hitchin
 SG5 1DB

CONTACT DETAILS

01462 632222
 hitchin@putterills.co.uk
 www.putterills.co.uk